

For Research Use Only

SMARCE1 Monoclonal antibody, PBS Only

Catalog Number: 66182-1-PBS



Basic Information

Catalog Number: 66182-1-PBS	GenBank Accession Number: BC007082	Purification Method: Protein G purification
Size: 100ug, Concentration: 1mg/ml by Nanodrop;	GeneID (NCBI): 6605	CloneNo.: 1F3D6
Source: Mouse	UNIPROT ID: Q969G3	
Isotype: IgG1	Full Name: SWI/SNF related, matrix associated, actin dependent regulator of chromatin, subfamily e, member 1	
Immunogen Catalog Number: AG1161	Calculated MW: 47 kDa	
	Observed MW: 50-55 kDa	

Applications

Tested Applications:
WB, IHC, IF/ICC, Indirect ELISA

Species Specificity:
human, mouse, rat

Background Information

Via antagonizing chromatin-mediated transcriptional repression, the SWI/SNF complex in *S. cerevisiae* and *Drosophila* is thought to facilitate transcriptional activation of specific genes. The BRG1/brm-associated factors, or SMARCE1, complex in mammals is functionally related to SWI/SNF and consists of 9 to 12 subunits, some of which are homologous to SWI/SNF subunits. It contains a DNA-binding HMG domain and performs multiple biological functions, including DNA-, protein- and chromatin-binding, transcription coactivating activity, chromatin modification, DNA-dependent negative regulation of transcription, regulation of transcription of the RNA polymerase II promoter. In addition, SMARCE1, as an ER (estrogen receptor) subtype-selective modulator, regulates ER mediated transcription in a ligand-dependent manner and also directly binds to AR (androgen receptor) to alter its activity. The calculated molecular weight of SMARCE1 is 47 kDa, but modified SMARCE1 is about 55 kDa.

Storage

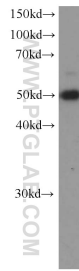
Storage:
Store at -80°C.

Storage Buffer:
PBS Only

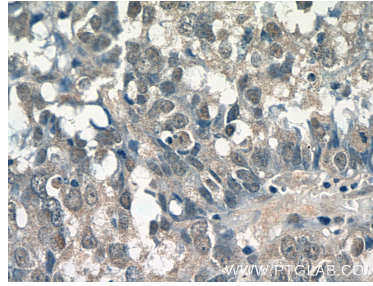
For technical support and original validation data for this product please contact:
T: 1 (888) 4PTGLAB (1-888-478-4522) (toll free in USA), or 1(312) 455-8498 (outside USA) E: proteintech@ptglab.com
W: ptglab.com

This product is exclusively available under Proteintech Group brand and is not available to purchase from any other manufacturer.

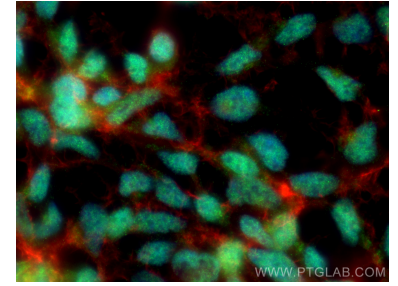
Selected Validation Data



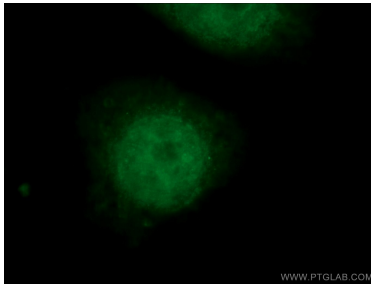
Jurkat cells were subjected to SDS PAGE followed by western blot with 66182-1-Ig (SMARCE1 Antibody) at dilution of 1:1000 incubated at room temperature for 1.5 hours. This data was developed using the same antibody clone with 66182-1-PBS in a different storage buffer formulation.



Immunohistochemical analysis of paraffin-embedded human breast cancer tissue slide using 66182-1-Ig (SMARCE1 Antibody) at dilution of 1:100 (under 40x lens). This data was developed using the same antibody clone with 66182-1-PBS in a different storage buffer formulation.



Immunofluorescent analysis of (4% PFA) fixed HEK-293 cells using SMARCE1 antibody (66182-1-Ig, Clone: 1F3D6) at dilution of 1:400 and Multi-rAb CoraLite® Plus 488-Goat Anti-Mouse Recombinant Secondary Antibody (H+L) (RGAM002), CL594-Phalloidin (red). This data was developed using the same antibody clone with 66182-1-PBS in a different storage buffer formulation.



Immunofluorescent analysis of HEK-293 cells using 66182-1-Ig (SMARCE1 antibody) at dilution of 1:50 and FITC-Conjugated AffiniPure Goat Anti-Mouse IgG(H+L). This data was developed using the same antibody clone with 66182-1-PBS in a different storage buffer formulation.