

For Research Use Only

Zinc Alpha 2 Glycoprotein Monoclonal antibody, PBS Only



Catalog Number: 66178-1-PBS

Basic Information

| | | |
|---|---|---|
| Catalog Number: 66178-1-PBS | GenBank Accession Number: BC033830 | Purification Method: Protein A purification |
| Size: 100ug, Concentration: 1 mg/ml by Nanodrop; | GeneID (NCBI): 563 | CloneNo.: 4B8A4 |
| Source: Mouse | UNIPROT ID: P25311 | |
| Isotype: IgG1 | Full Name: alpha-2-glycoprotein 1, zinc-binding | |
| Immunogen Catalog Number: AG5661 | Calculated MW: 298 aa, 34 kDa | |
| | Observed MW: 41 kDa | |

Applications

Tested Applications:
WB, IF, IHC, Indirect ELISA

Species Specificity:
human

Background Information

Zinc-alpha-2-glycoprotein (AZGP1), a 41-kDa soluble protein normally found in body fluids, functions as a lipid mobilizing factor (PMID: 19188554). It is known to be expressed in the secretory epithelia of the liver, lung, breast, GI tract, and sweat glands, sharing significant structural similarity with the class I major histocompatibility complex (MHC) antigens (PMID: 3422450). AZGP1 is involved in carcinogenesis and differentiation. Altered expression of AZGP1 has been reported in breast cancer, prostate cancer and lung adenocarcinoma, hepatocellular carcinoma, pancreatic carcinoma and oral tumors (PMID: 22625427).

Storage

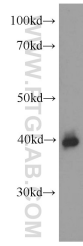
Storage:
Store at -80°C.

Storage Buffer:
PBS Only

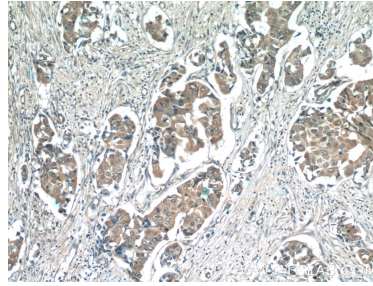
For technical support and original validation data for this product please contact:
T: 1 (888) 4PTGLAB (1-888-478-4522) (toll free in USA), or 1(312) 455-8498 (outside USA)
E: proteintech@ptglab.com
W: ptglab.com

This product is exclusively available under Proteintech Group brand and is not available to purchase from any other manufacturer.

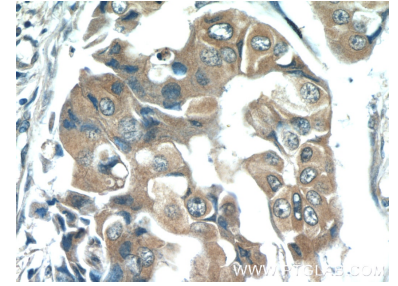
Selected Validation Data



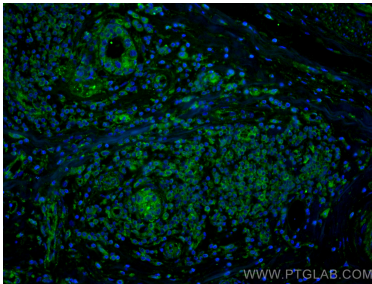
human plasma were subjected to SDS PAGE followed by western blot with 66178-1-Ig (AZGP1 Antibody) at dilution of 1:1000 incubated at room temperature for 1.5 hours. This data was developed using the same antibody clone with 66178-1-PBS in a different storage buffer formulation.



Immunohistochemical analysis of paraffin-embedded human breast cancer tissue slide using 66178-1-Ig (AZGP1 Antibody) at dilution of 1:50 (under 10x lens). This data was developed using the same antibody clone with 66178-1-PBS in a different storage buffer formulation.



Immunohistochemical analysis of paraffin-embedded human breast cancer tissue slide using 66178-1-Ig (AZGP1 Antibody) at dilution of 1:50 (under 40x lens). This data was developed using the same antibody clone with 66178-1-PBS in a different storage buffer formulation.



Immunofluorescent analysis of (4% PFA) fixed human breast cancer tissue using Zinc Alpha 2 Glycoprotein antibody (66178-1-Ig, Clone: 4B8A4) at dilution of 1:400 and CoraLite®488-Conjugated AffiniPure Goat Anti-Mouse IgG(H+L). This data was developed using the same antibody clone with 66178-1-PBS in a different storage buffer formulation.