

For Research Use Only

# MSH6 Monoclonal antibody, PBS Only (Capture)

Catalog Number: 66172-2-PBS



## Basic Information

<b>Catalog Number:</b> 66172-2-PBS	<b>GenBank Accession Number:</b> BC004246	<b>Purification Method:</b> Protein G purification
<b>Size:</b> 100ug , Concentration: 1mg/ml by Nanodrop;	<b>GeneID (NCBI):</b> 2956	<b>CloneNo.:</b> 5B5A7
<b>Source:</b> Mouse	<b>UNIPROT ID:</b> P52701	
<b>Isotype:</b> IgG1	<b>Full Name:</b> mutS homolog 6 (E. coli)	
<b>Immunogen Catalog Number:</b> AG12645	<b>Calculated MW:</b> 153 kDa	
	<b>Observed MW:</b> 150-160 kDa	

## Applications

**Tested Applications:**  
IHC, Cytometric bead array, Indirect ELISA

**Species Specificity:**  
human

## Product Information

66172-2-PBS targets MSH6 as part of a matched antibody pair:

MP50291-1: 66172-2-PBS capture and 66172-3-PBS detection (validated in Cytometric bead array)

MP50291-2: 66172-2-PBS capture and 66172-4-PBS detection (validated in Cytometric bead array)

Unconjugated mouse monoclonal antibody pair in PBS only (BSA and azide free) storage buffer at a concentration of 1 mg/mL, ready for conjugation.

This conjugation ready format makes antibodies ideal for use in many applications including: ELISAs, multiplex assays requiring matched pairs, mass cytometry, and multiplex imaging applications. Antibody use should be optimized by the end user for each application and assay.

## Background Information

MSH6, also named as DNA mismatch repair protein Msh6 or GTMBP, is a 1360 amino acid protein, which contains one PWWP domain and belongs to the DNA mismatch repair MutS family. MSH6 localizes in the nucleus and is a component of the post-replicative DNA mismatch repair system. Msh2 and Msh6 form a protein complex required to repair mismatches generated during DNA replication.

## Storage

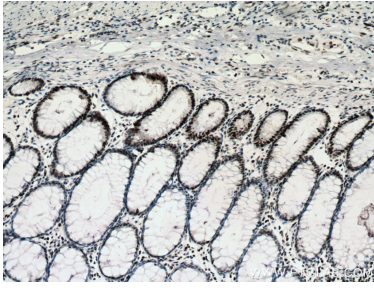
**Storage:**  
Store at -80°C.

**Storage Buffer:**  
PBS Only

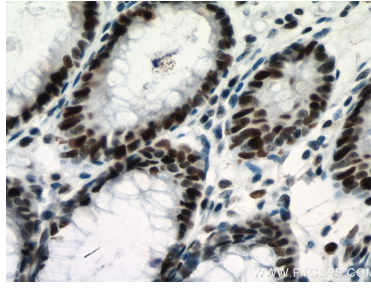
For technical support and original validation data for this product please contact:  
T: 1 (888) 4PTGLAB (1-888-478-4522) (toll free in USA), or 1(312) 455-8498 (outside USA)      E: proteintech@ptglab.com  
W: ptglab.com

**This product is exclusively available under Proteintech Group brand and is not available to purchase from any other manufacturer.**

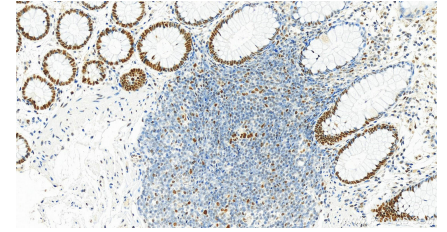
## Selected Validation Data



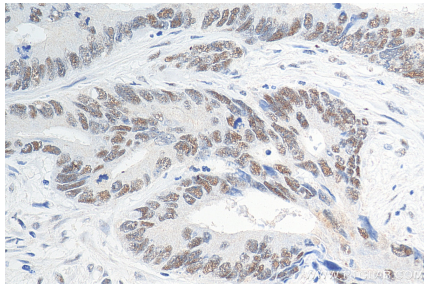
Immunohistochemical analysis of paraffin-embedded human colon cancer tissue slide using 66172-2-Ig (MSH6 antibody) at dilution of 1:2000 (under 10x lens). Heat mediated antigen retrieval with Tris-EDTA buffer (pH 9.0). This data was developed using the same antibody clone with 66172-2-PBS in a different storage buffer formulation.



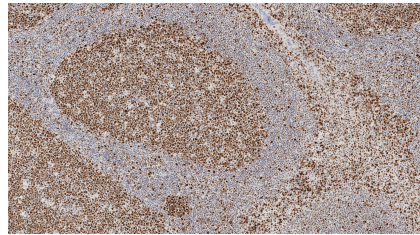
Immunohistochemical analysis of paraffin-embedded human colon cancer tissue slide using 66172-2-Ig (MSH6 antibody) at dilution of 1:2000 (under 40x lens). Heat mediated antigen retrieval with Tris-EDTA buffer (pH 9.0). This data was developed using the same antibody clone with 66172-2-PBS in a different storage buffer formulation.



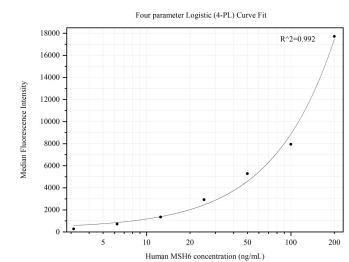
Immunohistochemical analysis of paraffin-embedded human normal colon slide using 66172-2-Ig (MSH6 antibody) at dilution of 1:4000 (under 20x lens). Heat mediated antigen retrieval with Tris-EDTA buffer (pH 9.0). This data was developed using the same antibody clone with 66172-2-PBS in a different storage buffer formulation.



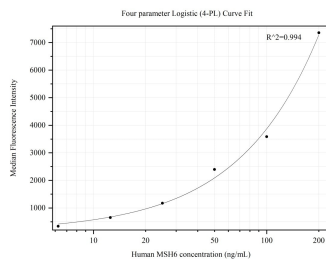
Immunohistochemical analysis of paraffin-embedded human colon cancer tissue slide using 66172-2-Ig (MSH6 antibody) at dilution of 1:2000 (under 40x lens). Heat mediated antigen retrieval with Tris-EDTA buffer (pH 9.0). This data was developed using the same antibody clone with 66172-2-PBS in a different storage buffer formulation.



Immunohistochemical analysis of paraffin-embedded human tonsillitis tissue slide using 66172-2-Ig (MSH6 antibody) at dilution of 1:10000 (under 10x lens). Heat mediated antigen retrieval with Tris-EDTA buffer (pH 9.0). This data was developed using the same antibody clone with 66172-2-PBS in a different storage buffer formulation.



Cytometric bead array standard curve of MP50291-1, MSH6 Monoclonal Matched Antibody Pair, PBS Only. Capture antibody: 66172-2-PBS. Detection antibody: 66172-3-PBS. Standard: Ag12645. Range: 3.125-200 ng/mL.



Cytometric bead array standard curve of MP50291-2, MSH6 Monoclonal Matched Antibody Pair, PBS Only. Capture antibody: 66172-2-PBS. Detection antibody: 66172-4-PBS. Standard: Ag12645. Range: 6.25-200 ng/mL.