

For Research Use Only

# MSH6 Monoclonal antibody, PBS Only

Catalog Number: 66172-1-PBS

Featured Product



## Basic Information

Catalog Number:

66172-1-PBS

Size:

100ug, Concentration: 1mg/ml by Nanodrop;

Source:

Mouse

Isotype:

IgG2a

Immunogen Catalog Number:

AG12645

GenBank Accession Number:

BC004246

GeneID (NCBI):

2956

UNIPROT ID:

P52701

Full Name:

mutS homolog 6 (E. coli)

Calculated MW:

153 kDa

Observed MW:

160 kDa

Purification Method:

Protein A purification

CloneNo.:

2E10B2

## Applications

Tested Applications:

WB, IHC, IF/ICC, IP, ELISA

Species Specificity:

human, mouse

## Background Information

MSH6, also named as DNA mismatch repair protein Msh6 or GTMBP, is a 1360 amino acid protein, which contains one PWWP domain and belongs to the DNA mismatch repair MutS family. MSH6 localizes in the nucleus and is a component of the post-replicative DNA mismatch repair system. Msh2 and Msh6 form a protein complex required to repair mismatches generated during DNA replication.

## Storage

Storage:

Store at -80°C.

Storage Buffer:

PBS Only

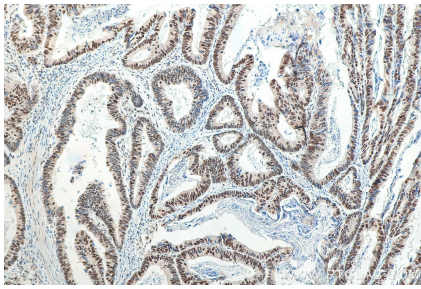
For technical support and original validation data for this product please contact:

T: 1 (888) 4PTGLAB (1-888-478-4522) (toll free in USA), or 1(312) 455-8498 (outside USA)

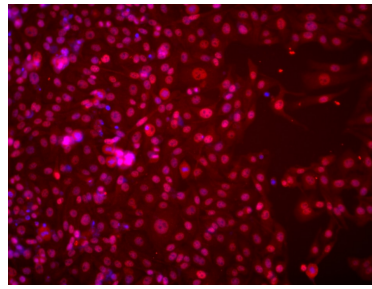
E: [proteintech@ptglab.com](mailto:proteintech@ptglab.com)  
W: [ptglab.com](http://ptglab.com)

This product is exclusively available under Proteintech Group brand and is not available to purchase from any other manufacturer.

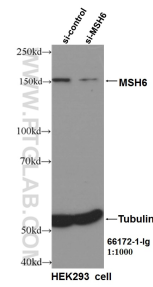
## Selected Validation Data



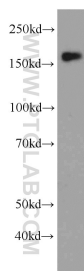
Immunohistochemical analysis of paraffin-embedded human colon cancer tissue slide using 66172-1-Ig (MSH6 antibody) at dilution of 1:1000 (under 10x lens). Heat mediated antigen retrieval with Tris-EDTA buffer (pH 9.0). This data was developed using the same antibody clone with 66172-1-PBS in a different storage buffer formulation.



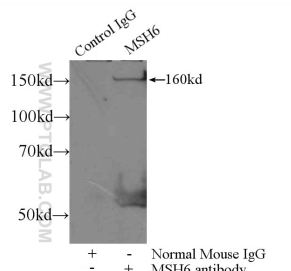
Immunofluorescent analysis of (4% PFA) fixed U2OS cells using MSH6 antibody (66172-1-Ig, Clone: 2E10B2) at dilution of 1:1000 and Multi-rAb CoraLite® Plus 594-Goat Anti-Mouse Recombinant Secondary Antibody (H+L) (Cat.NO. RGAM004). This data was developed using the same antibody clone with 66172-1-PBS in a different storage buffer formulation.



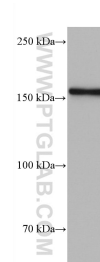
WB result of MSH6 antibody (66172-1-Ig, 1:1000) with si-Control and si-MSH6 transfected HEK293 cells. This data was developed using the same antibody clone with 66172-1-PBS in a different storage buffer formulation.



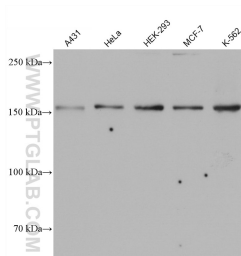
HEK-293 cells were subjected to SDS PAGE followed by western blot with 66172-1-Ig (MSH6 Antibody) at dilution of 1:1000 incubated at room temperature for 1.5 hours. This data was developed using the same antibody clone with 66172-1-PBS in a different storage buffer formulation.



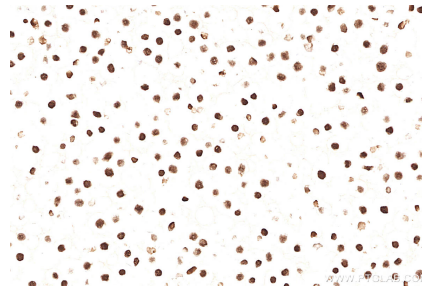
IP result of anti-MSH6 (IP:66172-1-Ig, 4ug; Detection:66172-1-Ig 1:600) with HEK-293 cells lysate 1800ug. This data was developed using the same antibody clone with 66172-1-PBS in a different storage buffer formulation.



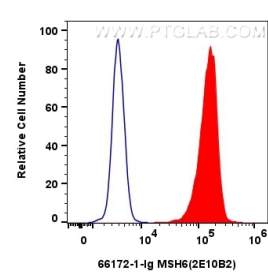
U2OS cells were subjected to SDS PAGE followed by western blot with 66172-1-Ig (MSH6 antibody) at dilution of 1:10000 incubated at room temperature for 1.5 hours. This data was developed using the same antibody clone with 66172-1-PBS in a different storage buffer formulation.



Various lysates were subjected to SDS PAGE followed by western blot with 66172-1-Ig (MSH6 antibody) at dilution of 1:10000 incubated at room temperature for 1.5 hours. This data was developed using the same antibody clone with 66172-1-PBS in a different storage buffer formulation.



Immunohistochemical analysis of paraffin-embedded Ramos cells slide using 66172-1-Ig (MSH6 antibody) at dilution of 1:2000 (under 40x lens). Heat mediated antigen retrieval with Tris-EDTA buffer (pH 9.0). This data was developed using the same antibody clone with 66172-1-PBS in a different storage buffer formulation.



$1 \times 10^6$  HEK-293 cells were intracellularly stained with 0.4 ug MSH6 Monoclonal antibody (66172-1-Ig, Clone:2E10B2) and CoraLite®488-Conjugated AffiniPure Goat Anti-Mouse IgG(H+L) (SA00013-1)(red), or 0.4 ug Mouse IgG2a isotype control Mouse McAb (66360-2-Ig, Clone: 11A1B2) (blue). Cells were fixed and permeabilized with Transcription Factor Staining Buffer Kit (PF00011). This data was developed using the same antibody clone with 66172-1-PBS

