

For Research Use Only

# Claudin 18 Monoclonal antibody, PBS Only

Catalog Number: 66167-1-PBS



## Basic Information

<b>Catalog Number:</b> 66167-1-PBS	<b>GenBank Accession Number:</b> BC146668	<b>Purification Method:</b> Protein A purification
<b>Size:</b> 100ug, Concentration: 1mg/ml by Nanodrop;	<b>GeneID (NCBI):</b> 51208	<b>CloneNo.:</b> 5G7F2
<b>Source:</b> Mouse	<b>UNIPROT ID:</b> P56856	
<b>Isotype:</b> IgG2a	<b>Full Name:</b> claudin 18	
<b>Immunogen Catalog Number:</b> AG15517	<b>Calculated MW:</b> 261 aa, 28 kDa	
	<b>Observed MW:</b> 29 kDa	

## Applications

**Tested Applications:**  
IHC, IP, Indirect ELISA

**Species Specificity:**  
human, mouse

## Background Information

Claudin 18 (CLDN18) belongs to the large claudin family of proteins, which are tetraspan transmembrane proteins of tight junctions (PMID: 11585919; 18036336). Claudins exhibit specific patterns of expression in different tissues (PMID: 15447685). CLDN18 is specifically expressed in the stomach and lung. CLDN18 has two alternatively spliced variants, CLDN18.1 and CLDN18.2. CLDN18.2 is a highly selective gastric lineage marker that determines the gastric phenotype in a neoplastic condition, whereas CLDN18.1 is lung specific (PMID: 11585919; 21832145). Altered CLDN18 expression has been reported in various human malignancies, including gastric cancer, lung adenocarcinoma, and pancreatic neoplasm (PMID: 17459057; 22076167; 21832145). This antibody can recognize both CLDN18.1 and CLDN18.2.

## Storage

**Storage:**  
Store at -80°C.

**Storage Buffer:**  
PBS Only

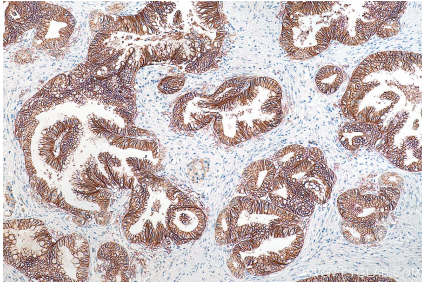
For technical support and original validation data for this product please contact:

T: 1 (888) 4PTGLAB (1-888-478-4522) (toll free in USA), or 1(312) 455-8498 (outside USA)

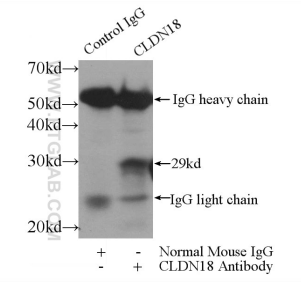
E: [proteintech@ptglab.com](mailto:proteintech@ptglab.com)  
W: [ptglab.com](http://ptglab.com)

**This product is exclusively available under Proteintech Group brand and is not available to purchase from any other manufacturer.**

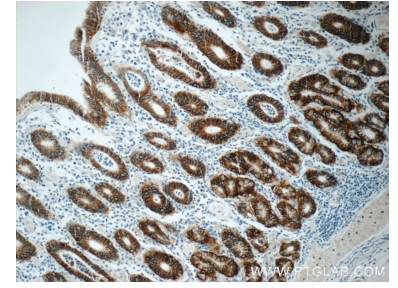
## Selected Validation Data



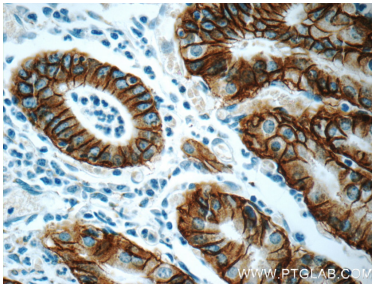
Immunohistochemical analysis of paraffin-embedded human pancreas cancer tissue slide using 66167-1-Ig (Claudin 18 antibody) at dilution of 1:1000 (under 10x lens). Heat mediated antigen retrieval with Tris-EDTA buffer (pH 9.0). This data was developed using the same antibody clone with 66167-1-PBS in a different storage buffer formulation.



IP result of anti-Claudin 18 (IP:66167-1-Ig, 3ug; Detection:66167-1-Ig 1:300) with mouse stomach tissue lysate 4000ug. This data was developed using the same antibody clone with 66167-1-PBS in a different storage buffer formulation.



Immunohistochemical analysis of paraffin-embedded human stomach tissue slide using 66167-1-Ig (Claudin 18 antibody at dilution of 1:1000). This data was developed using the same antibody clone with 66167-1-PBS in a different storage buffer formulation.



Immunohistochemical analysis of paraffin-embedded human stomach tissue slide using 66167-1-Ig (Claudin 18 antibody at dilution of 1:1000). This data was developed using the same antibody clone with 66167-1-PBS in a different storage buffer formulation.