

For Research Use Only

# TBP Monoclonal antibody, PBS Only

Catalog Number: 66166-1-PBS



## Basic Information

<b>Catalog Number:</b> 66166-1-PBS	<b>GenBank Accession Number:</b> BC110341	<b>Purification Method:</b> Protein A purification
<b>Size:</b> 100ug, Concentration: 1mg/ml by Nanodrop;	<b>GeneID (NCBI):</b> 6908	<b>CloneNo.:</b> 2H3B2
<b>Source:</b> Mouse	<b>UNIPROT ID:</b> P20226	
<b>Isotype:</b> IgG2a	<b>Full Name:</b> TATA box binding protein	
<b>Immunogen Catalog Number:</b> AG12383	<b>Calculated MW:</b> 338 aa, 38 kDa	
	<b>Observed MW:</b> mouse/rat 33-36 kDa and human 37-43kDa	

## Applications

**Tested Applications:**  
WB, IP, IF, IHC, Indirect ELISA

**Species Specificity:**  
human, mouse, rat, pig

## Background Information

The TATA binding protein (TBP) is a transcription factor that binds specifically to a DNA sequence TATA box. This DNA sequence is found about 25-30 base pairs upstream of the transcription start site in some eukaryotic gene promoters. TBP, along with a variety of TBP-associated factors, make up the TFIID, a general transcription factor that in turn makes up part of the RNA polymerase II preinitiation complex. As one of the few proteins in the preinitiation complex that binds DNA in a sequence-specific manner, it helps position RNA polymerase II over the transcription start site of the gene. However, it is estimated that only 10-20% of human promoters have TATA boxes. Therefore, TBP is probably not the only protein involved in positioning RNA polymerase II. This antibody detects human TBP (~40 kDa) and mouse/rat Tbp (~35 kDa).

## Storage

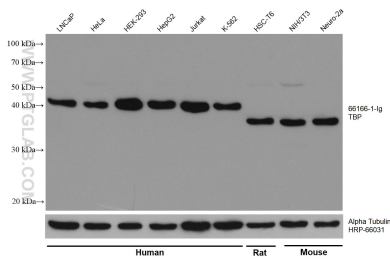
**Storage:**  
Store at -80°C.

**Storage Buffer:**  
PBS Only

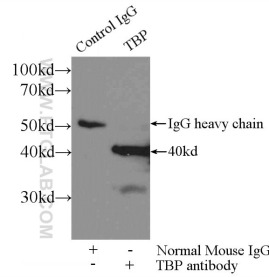
For technical support and original validation data for this product please contact:  
T: 1 (888) 4PTGLAB (1-888-478-4522) (toll free in USA), or 1(312) 455-8498 (outside USA)      E: proteintech@ptglab.com  
W: ptglab.com

This product is exclusively available under Proteintech Group brand and is not available to purchase from any other manufacturer.

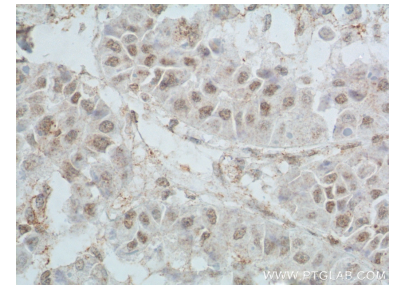
## Selected Validation Data



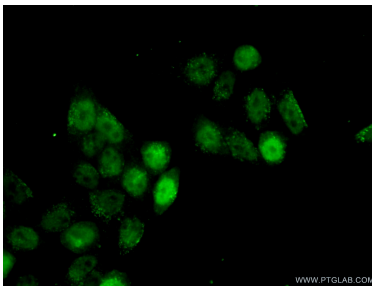
Various lysates were subjected to SDS PAGE followed by western blot with 66166-1-Ig (TBP antibody) at dilution of 1:200000 incubated at room temperature for 1.5 hours. The membrane was stripped and reblotted with HRP-conjugated Alpha Tubulin Monoclonal antibody (HRP-66031) as loading control. This data was developed using the same antibody clone with 66166-1-PBS in a different storage buffer formulation.



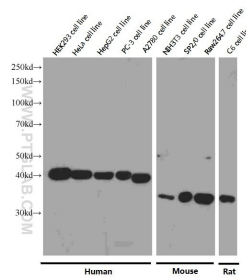
IP result of anti-TBP (IP:66166-1-Ig, 3ug; Detection:66166-1-Ig 1:800) with HEK-293 cells lysate 1800ug. This data was developed using the same antibody clone with 66166-1-PBS in a different storage buffer formulation.



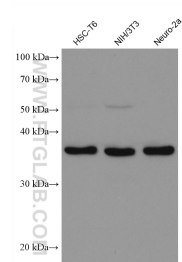
Immunohistochemical analysis of paraffin-embedded human liver cancer tissue slide using 66166-1-Ig (TBP Antibody) at dilution of 1:650 (under 40x lens). Heat mediated antigen retrieval with Tris-EDTA buffer (pH 9.0). This data was developed using the same antibody clone with 66166-1-PBS in a different storage buffer formulation.



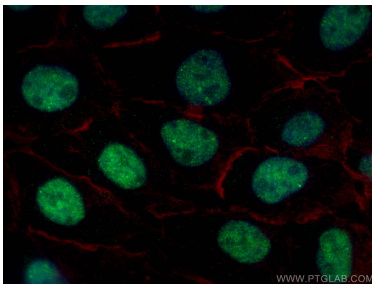
Immunofluorescent analysis of (10% Formaldehyde) fixed HeLa cells using 66166-1-Ig (TBP antibody) at dilution of 1:100 and Alexa Fluor 488-conjugated AffiniPure Goat Anti-Mouse IgG(H+L). This data was developed using the same antibody clone with 66166-1-PBS in a different storage buffer formulation.



Western blot analysis of TBP in various cell lines using Proteintech antibody 66166-1-Ig at a dilution of 1:8000 incubated at room temperature for 1.5 hours. This data was developed using the same antibody clone with 66166-1-PBS in a different storage buffer formulation.



Various lysates were subjected to SDS PAGE followed by western blot with 66166-1-Ig (TBP antibody) at dilution of 1:200000 incubated at room temperature for 1.5 hours. This data was developed using the same antibody clone with 66166-1-PBS in a different storage buffer formulation.



Immunofluorescent analysis of (4% PFA) fixed A431 cells using TBP antibody (66166-1-Ig, Clone: 2H3B2) at dilution of 1:2000 and CoraLite®488-Conjugated AffiniPure Goat Anti-Mouse IgG(H+L), CL594-phalloidin (red). This data was developed using the same antibody clone with 66166-1-PBS in a different storage buffer formulation.