

For Research Use Only

# ANP32B Monoclonal antibody, PBS Only (Capture/Detector)

Catalog Number: 66160-3-PBS



## Basic Information

<b>Catalog Number:</b> 66160-3-PBS	<b>GenBank Accession Number:</b> BC013003	<b>Purification Method:</b> Protein G purification
<b>Size:</b> 100ug , Concentration: 1 mg/ml by Nanodrop;	<b>GeneID (NCBI):</b> 10541	<b>CloneNo.:</b> 1H3E5
<b>Source:</b> Mouse	<b>UNIPROT ID:</b> Q92688	
<b>Isotype:</b> IgG1	<b>Full Name:</b> acidic (leucine-rich) nuclear phosphoprotein 32 family, member B	
<b>Immunogen Catalog Number:</b> AG1274	<b>Calculated MW:</b> 29 kDa	

## Applications

**Tested Applications:**  
Cytometric bead array, Sandwich ELISA, Indirect ELISA,  
Sample test

**Species Specificity:**  
human

## Product Information

66160-3-PBS targets ANP32B as part of a matched antibody pair:

MP50363-2: 66160-1-PBS capture and 66160-3-PBS detection (validated in Cytometric bead array)

MP50363-3: 66160-3-PBS capture and 66160-2-PBS detection (validated in Cytometric bead array, Sandwich ELISA)

Unconjugated mouse monoclonal antibody pair in PBS only (BSA and azide free) storage buffer at a concentration of 1 mg/mL, ready for conjugation.

This conjugation ready format makes antibodies ideal for use in many applications including: ELISAs, multiplex assays requiring matched pairs, mass cytometry, and multiplex imaging applications. Antibody use should be optimized by the end user for each application and assay.

## Storage

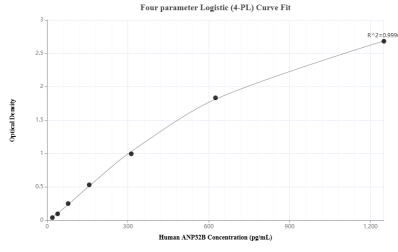
**Storage:**  
Store at -80°C.

**Storage Buffer:**  
PBS Only

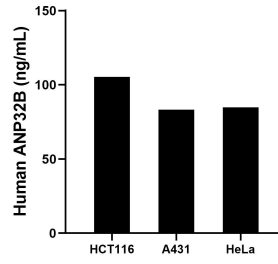
For technical support and original validation data for this product please contact:  
T: 1 (888) 4PTGLAB (1-888-478-4522) (toll free in USA), or 1(312) 455-8498 (outside USA)      E: proteintech@ptglab.com  
W: ptglab.com

This product is exclusively available under Proteintech Group brand and is not available to purchase from any other manufacturer.

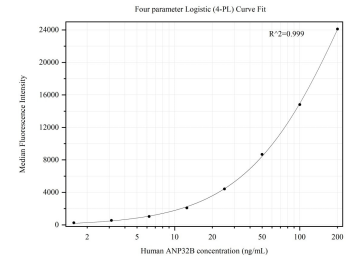
## Selected Validation Data



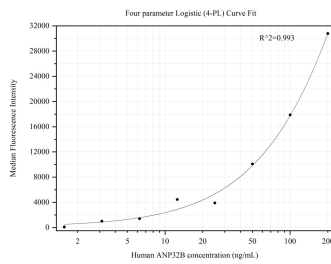
Sandwich ELISA standard curve of MP50363-3, Human ANP32B Monoclonal Matched Antibody Pair - PBS only. 66160-3-PBS was coated to a plate as the capture antibody and incubated with serial dilutions of standard Ag1274. 66160-2-PBS was HRP conjugated as the detection antibody. Range: 19.5-1250 pg/mL



The mean ANP32B concentration was determined to be 105.34 ng/mL in HCT116 cell extract based on a 2.0 mg/mL extract load, 83.16 ng/mL in A431 cell extract based on a 1.3 mg/mL extract load and 84.78 ng/mL in HeLa cell extract based on a 1.5 mg/mL extract load.



Cytometric bead array standard curve of MP50363-2, ANP32B Monoclonal Matched Antibody Pair, PBS Only. Capture antibody: 66160-1-PBS. Detection antibody: 66160-3-PBS. Standard:Ag1274. Range: 1.563-200 ng/mL



Cytometric bead array standard curve of MP50363-3, ANP32B Monoclonal Matched Antibody Pair, PBS Only. Capture antibody: 66160-3-PBS. Detection antibody: 66160-2-PBS. Standard:Ag1274. Range: 1.563-200 ng/mL