

For Research Use Only

# Fibrinogen Gamma Chain Monoclonal antibody, PBS Only

Catalog Number: 66158-1-PBS



## Basic Information

<b>Catalog Number:</b> 66158-1-PBS	<b>GenBank Accession Number:</b> BC007044	<b>Purification Method:</b> Protein A purification
<b>Size:</b> 100ug, Concentration: 1mg/ml by Nanodrop;	<b>GeneID (NCBI):</b> 2266	<b>CloneNo.:</b> 2B2B8
<b>Source:</b> Mouse	<b>UNIPROT ID:</b> P02679	
<b>Isotype:</b> IgM	<b>Full Name:</b> fibrinogen gamma chain	
<b>Immunogen Catalog Number:</b> AG8817	<b>Calculated MW:</b> 453aa,52 kDa; 437aa,50 kDa	
	<b>Observed MW:</b> 52 kDa	

## Applications

**Tested Applications:**  
WB, IHC, IF/ICC, ELISA

**Species Specificity:**  
human

## Background Information

Fibrinogen is a soluble plasma glycoprotein synthesized in the liver. It is composed of two sets of three structurally different subunits: alpha (FGA), beta (FGB), gamma (FGG). Fibrinogen is converted by thrombin into fibrin during blood coagulation. Fibrinogen and fibrin play overlapping roles in blood clotting, fibrinolysis, cellular and matrix interactions, the inflammatory response, wound healing, and neoplasia (PMID: 16102057). FGG is the gamma chain of fibrinogen. Mutations in the gene of FGG lead to several disorders, including dysfibrinogenemia, hypofibrinogenemia and thrombophilia.

## Storage

**Storage:**  
Store at -80°C.

**Storage Buffer:**  
PBS Only

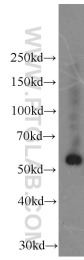
For technical support and original validation data for this product please contact:

T: 1 (888) 4PTGLAB (1-888-478-4522) (toll free in USA), or 1(312) 455-8498 (outside USA)

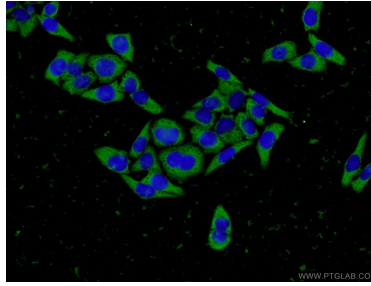
E: [proteintech@ptglab.com](mailto:proteintech@ptglab.com)  
W: [ptglab.com](http://ptglab.com)

**This product is exclusively available under Proteintech Group brand and is not available to purchase from any other manufacturer.**

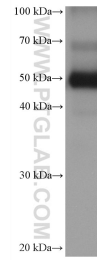
## Selected Validation Data



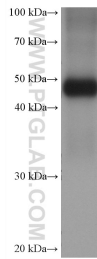
L02 cells were subjected to SDS PAGE followed by western blot with 66158-1-Ig (Fibrinogen gamma chain antibody) at dilution of 1:1000 incubated at room temperature for 1.5 hours. This data was developed using the same antibody clone with 66158-1-PBS in a different storage buffer formulation.



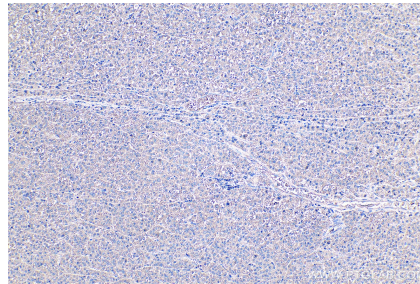
Immunofluorescent analysis of L02 cells using 66158-1-Ig (Fibrinogen gamma chain antibody) at dilution of 1:50 and Alexa Fluor 488-conjugated AffiniPure Goat Anti-Mouse IgG (H+L). This data was developed using the same antibody clone with 66158-1-PBS in a different storage buffer formulation.



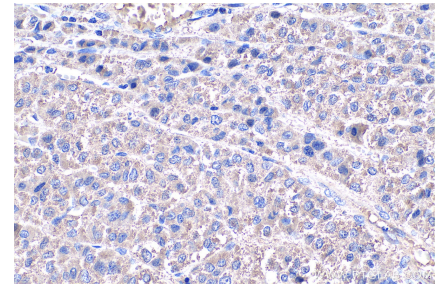
human peripheral blood leukocyte were subjected to SDS PAGE followed by western blot with 66158-1-Ig (Fibrinogen Gamma Chain antibody) at dilution of 1:10000 incubated at room temperature for 1.5 hours. This data was developed using the same antibody clone with 66158-1-PBS in a different storage buffer formulation.



human peripheral blood platelets were subjected to SDS PAGE followed by western blot with 66158-1-Ig (Fibrinogen Gamma Chain antibody) at dilution of 1:10000 incubated at room temperature for 1.5 hours. This data was developed using the same antibody clone with 66158-1-PBS in a different storage buffer formulation.



Immunohistochemical analysis of paraffin-embedded human liver cancer tissue slide using 66158-1-Ig (Fibrinogen Gamma Chain antibody) at dilution of 1:2000 (under 10x lens). Heat mediated antigen retrieval with Tris-EDTA buffer (pH 9.0). This data was developed using the same antibody clone with 66158-1-PBS in a different storage buffer formulation.



Immunohistochemical analysis of paraffin-embedded human liver cancer tissue slide using 66158-1-Ig (Fibrinogen Gamma Chain antibody) at dilution of 1:2000 (under 40x lens). Heat mediated antigen retrieval with Tris-EDTA buffer (pH 9.0). This data was developed using the same antibody clone with 66158-1-PBS in a different storage buffer formulation.