

For Research Use Only

Complement factor B Monoclonal antibody, PBS Only



Catalog Number: 66154-1-PBS

Basic Information

Catalog Number: 66154-1-PBS	GenBank Accession Number: BC007990	Purification Method: Thiophilic affinity chromatograph
Size: 100ug , Concentration: 1 mg/ml by Nanodrop;	GeneID (NCBI): 629	CloneNo.: 8D2B6
Source: Mouse	UNIPROT ID: P00751	
Isotype: IgM	Full Name: complement factor B	
Immunogen Catalog Number: AG19107	Calculated MW: 86 kDa	
	Observed MW: 93 kDa	

Applications

Tested Applications:
WB, IF, IHC, Indirect ELISA

Species Specificity:
human

Background Information

Complement factor B (CFB) is a component of the alternative pathway of complement activation. Complement factor B is cleaved into Ba and Bb by factor D in the presence of C3b. The active subunit Bb is a serine protease which associates with C3b to form the alternative pathway C3 convertase. Bb is involved in the proliferation of preactivated B lymphocytes, while Ba inhibits their proliferation.

Storage

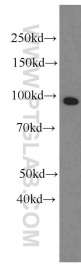
Storage:
Store at -80°C.

Storage Buffer:
PBS Only

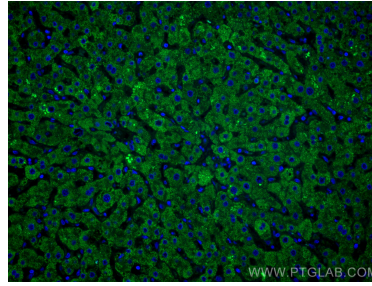
For technical support and original validation data for this product please contact:
T: 1 (888) 4PTGLAB (1-888-478-4522) (toll free in USA), or 1(312) 455-8498 (outside USA) E: proteintech@ptglab.com
W: ptglab.com

This product is exclusively available under Proteintech Group brand and is not available to purchase from any other manufacturer.

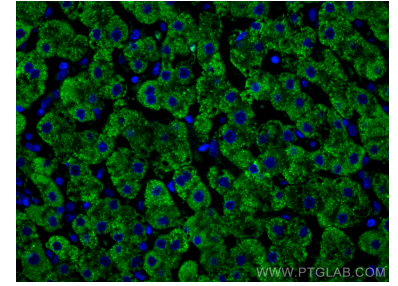
Selected Validation Data



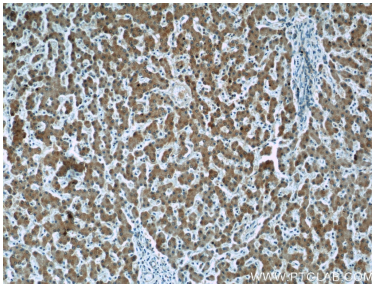
human blood were subjected to SDS PAGE followed by western blot with 66154-1-Ig (Complement factor B antibody) at dilution of 1:1000 incubated at room temperature for 1.5 hours. This data was developed using the same antibody clone with 66154-1-PBS in a different storage buffer formulation.



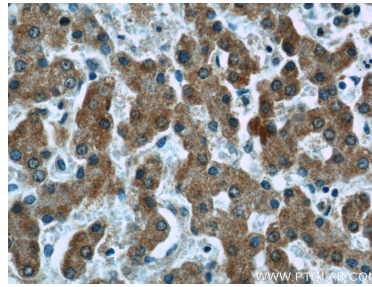
Immunofluorescent analysis of (4% PFA) fixed human liver tissue using Complement factor B antibody (66154-1-Ig, Clone: 8D2B6) at dilution of 1:400 and CoraLite®488-Conjugated AffiniPure Goat Anti-Mouse IgG(H+L). This data was developed using the same antibody clone with 66154-1-PBS in a different storage buffer formulation.



Immunofluorescent analysis of (4% PFA) fixed human liver tissue using Complement factor B antibody (66154-1-Ig, Clone: 8D2B6) at dilution of 1:400 and CoraLite®488-Conjugated AffiniPure Goat Anti-Mouse IgG(H+L). This data was developed using the same antibody clone with 66154-1-PBS in a different storage buffer formulation.



Immunohistochemical analysis of paraffin-embedded human liver tissue slide using 66154-1-Ig (Complement factor B antibody at dilution of 1:50 (under 10x lens). This data was developed using the same antibody clone with 66154-1-PBS in a different storage buffer formulation.



Immunohistochemical analysis of paraffin-embedded human liver tissue slide using 66154-1-Ig (Complement factor B antibody at dilution of 1:50 (under 40x lens). This data was developed using the same antibody clone with 66154-1-PBS in a different storage buffer formulation.