

For Research Use Only

HBE1-Specific Monoclonal antibody, PBS Only



Catalog Number: 66151-1-PBS

Basic Information

Catalog Number:

66151-1-PBS

Size:

100ug, Concentration: 1 mg/ml by
Nanodrop;

Source:

Mouse

Isotype:

IgG1

GenBank Accession Number:

NM_005330

GeneID (NCBI):

3046

UNIPROT ID:

P02100

Full Name:

hemoglobin, epsilon 1

Observed MW:

16 kDa

Purification Method:

Protein G purification

CloneNo.:

2C11G6

Applications

Tested Applications:

WB, IHC, Indirect ELISA

Species Specificity:

human

Background Information

The hemoglobin molecule is a tetramer consisting of two α -globin-like polypeptide chains and two β -globin-like chains. The human hemoglobin genes are expressed in a tightly developmentally controlled fashion. ϵ -globin (HBE1) is the predominantly expressed gene during the embryonic stage. The epsilon hemoglobin chain seems to be the best marker for fetal nucleated red blood cells (NRBCs). Anti-HBE1 may be used to label and isolate fetal cells from maternal blood and can be useful in prenatal diagnosis. This antibody specifically recognizes the HBE1 and doesn't cross-react with other globin chains.

Storage

Storage:

Store at -80°C .

Storage Buffer:

PBS Only

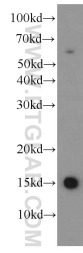
For technical support and original validation data for this product please contact:

T: 1 (888) 4PTGLAB (1-888-478-4522) (toll free
in USA), or 1(312) 455-8498 (outside USA)

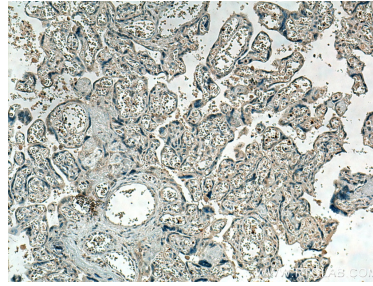
E: proteintech@ptglab.com
W: ptglab.com

This product is exclusively available under Proteintech Group brand and is not available to purchase from any other manufacturer.

Selected Validation Data



K-562 cells were subjected to SDS PAGE followed by western blot with 66151-1-Ig (HBE1-Specific antibody) at dilution of 1:500 incubated at room temperature for 1.5 hours. This data was developed using the same antibody clone with 66151-1-PBS in a different storage buffer formulation.



Immunohistochemical analysis of paraffin-embedded human placenta tissue slide using 66151-1-Ig (HBE1-Specific antibody) at dilution of 1:1000 (under 10x Lens). Heat mediated antigen retrieval with Tris-EDTA buffer (pH 9.0). This data was developed using the same antibody clone with 66151-1-PBS in a different storage buffer formulation.