

For Research Use Only

TIMM44 Monoclonal antibody, PBS Only



Catalog Number: 66149-1-PBS

Featured Product

Basic Information

Catalog Number:

66149-1-PBS

Size:

100ug, Concentration: 1mg/ml by Nanodrop;

Source:

Mouse

Isotype:

IgG2c

Immunogen Catalog Number:

AG21389

GenBank Accession Number:

BC033628

GeneID (NCBI):

10469

UNIPROT ID:

O43615

Full Name:

translocase of inner mitochondrial membrane 44 homolog (yeast)

Calculated MW:

452 aa, 51 kDa

Observed MW:

45 kDa

Purification Method:

Protein A purification

CloneNo.:

4G7D4

Applications

Tested Applications:

WB, IF, IHC, Indirect ELISA

Species Specificity:

human, mouse, rat, pig, rabbit

Storage

Storage:

Store at -80°C.

Storage Buffer:

PBS Only

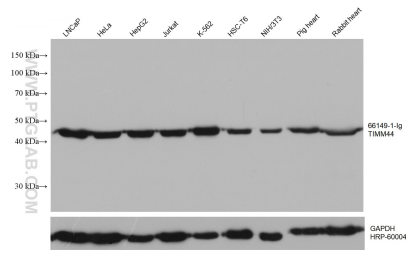
For technical support and original validation data for this product please contact:

T: 1 (888) 4PTGLAB (1-888-478-4522) (toll free in USA), or 1(312) 455-8498 (outside USA)

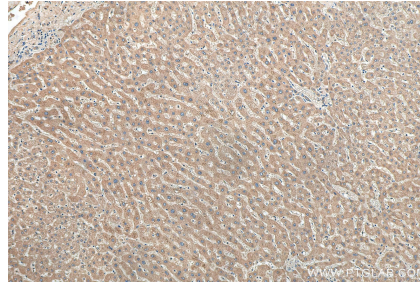
E: proteintech@ptglab.com
W: ptglab.com

This product is exclusively available under Proteintech Group brand and is not available to purchase from any other manufacturer.

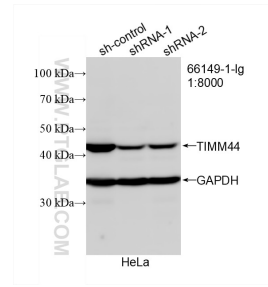
Selected Validation Data



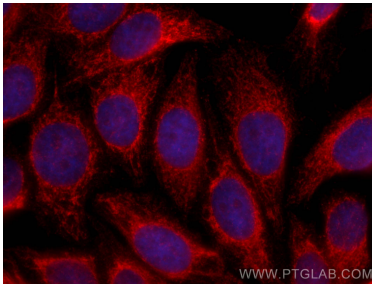
Various lysates were subjected to SDS PAGE followed by western blot with 66149-1-Ig (TIMM44 antibody) at dilution of 1:10000 incubated at room temperature for 1.5 hours. The membrane was stripped and reblotted with HRP-conjugated GAPDH Monoclonal antibody (HRP-60004) as loading control. This data was developed using the same antibody clone with 66149-1-PBS in a different storage buffer formulation.



Immunohistochemical analysis of paraffin-embedded human liver tissue slide using 66149-1-Ig (TIMM44 antibody) at dilution of 1:500 (under 10x lens). Heat mediated antigen retrieval with Tris-EDTA buffer (pH 9.0). This data was developed using the same antibody clone with 66149-1-PBS in a different storage buffer formulation.



WB result of TIMM44 antibody (66149-1-Ig; 1:8000; incubated at room temperature for 1.5 hours) with sh-Control and sh-TIMM44 transfected HeLa cells. This data was developed using the same antibody clone with 66149-1-PBS in a different storage buffer formulation.



Immunofluorescent analysis of (4% PFA) fixed HepG2 cells using TIMM44 antibody (66149-1-Ig, Clone: 4G7D4) at dilution of 1:400 and CoraLite®594-Conjugated AffiniPure Goat Anti-Mouse IgG(H+L). This data was developed using the same antibody clone with 66149-1-PBS in a different storage buffer formulation.