

For Research Use Only

# BBS5 Monoclonal antibody, PBS Only

Catalog Number: 66136-1-PBS



## Basic Information

<b>Catalog Number:</b> 66136-1-PBS	<b>GenBank Accession Number:</b> BC044593	<b>Purification Method:</b> Protein A purification
<b>Size:</b> 100ug, Concentration: 1mg/ml by Nanodrop;	<b>GeneID (NCBI):</b> 129880	<b>CloneNo.:</b> 4G8E12
<b>Source:</b> Mouse	<b>UNIPROT ID:</b> Q8N3I7	
<b>Isotype:</b> IgG1	<b>Full Name:</b> Bardet-Biedl syndrome 5	
<b>Immunogen Catalog Number:</b> AG6844	<b>Calculated MW:</b> 39 kDa	
	<b>Observed MW:</b> 39 kDa	

## Applications

**Tested Applications:**  
WB, IHC, IF/ICC, Indirect ELISA

**Species Specificity:**  
human, mouse

## Background Information

BBS5 encodes a protein that has been directly linked to Bardet-Biedl syndrome. Bardet-Biedl syndrome (BBS) is an autosomal recessive condition characterised by rod-cone dystrophy, postaxial polydactyly, central obesity, mental retardation, hypogonadism, and renal dysfunction. Other associated clinical findings in BBS patients include diabetes, hypertension and congenital heart defects. BBS expression varies both within and between families and diagnosis is often difficult. Experimentation in non-human eukaryotes suggests that BBS5 is expressed in ciliated cells and that it is required for the formation of cilia. Alternate transcriptional splice variants have been observed but have not been fully characterized.

## Storage

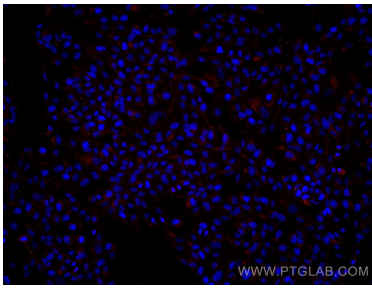
**Storage:**  
Store at -80°C.

**Storage Buffer:**  
PBS Only

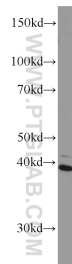
For technical support and original validation data for this product please contact:  
T: 1 (888) 4PTGLAB (1-888-478-4522) (toll free in USA), or 1(312) 455-8498 (outside USA)  
E: [proteintech@ptglab.com](mailto:proteintech@ptglab.com)  
W: [ptglab.com](http://ptglab.com)

This product is exclusively available under Proteintech Group brand and is not available to purchase from any other manufacturer.

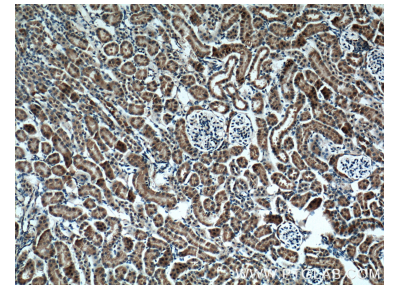
## Selected Validation Data



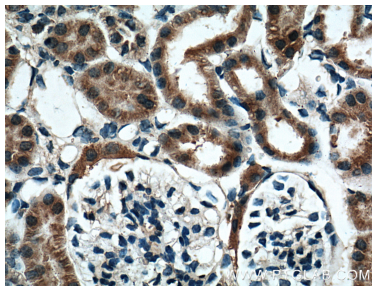
Immunofluorescent analysis of (4% PFA) fixed hTERT-RPE1 cells using BBS5 antibody (66136-1-Ig, Clone: 4G8E12 ) at dilution of 1:3511 and Multi-rAb CoraLite® Plus 594-Goat Anti-Mouse Recombinant Secondary Antibody (H+L) (Cat.NO. RGAM004). This data was developed using the same antibody clone with 66136-1-PBS in a different storage buffer formulation.



human brain tissue were subjected to SDS PAGE followed by western blot with 66136-1-Ig (BBS5 antibody) at dilution of 1:1000 incubated at room temperature for 1.5 hours. This data was developed using the same antibody clone with 66136-1-PBS in a different storage buffer formulation.



Immunohistochemical analysis of paraffin-embedded mouse kidney tissue slide using 66136-1-Ig (BBS5 Antibody) at dilution of 1:200 (under 10x lens). Heat mediated antigen retrieval with Tris-EDTA buffer (pH 9.0). This data was developed using the same antibody clone with 66136-1-PBS in a different storage buffer formulation.



Immunohistochemical analysis of paraffin-embedded mouse kidney tissue slide using 66136-1-Ig (BBS5 Antibody) at dilution of 1:200 (under 40x lens). Heat mediated antigen retrieval with Tris-EDTA buffer (pH 9.0). This data was developed using the same antibody clone with 66136-1-PBS in a different storage buffer formulation.