

For Research Use Only

RPL3 Monoclonal antibody, PBS Only



Catalog Number: 66130-1-PBS

Basic Information

Catalog Number: 66130-1-PBS	GenBank Accession Number: BC012786	Purification Method: Protein G purification
Size: 100ug , Concentration: 1 mg/ml by Nanodrop;	GeneID (NCBI): 6122	CloneNo.: 2G1B8
Source: Mouse	UNIPROT ID: P39023	
Isotype: IgG1	Full Name: ribosomal protein L3	
Immunogen Catalog Number: AG20400	Calculated MW: 46/27 kDa	
	Observed MW: 46 kDa	

Applications

Tested Applications:
WB, IF, IHC, Indirect ELISA

Species Specificity:
human, mouse, rat

Background Information

Ribosomes, the complexes that catalyze protein synthesis, consist of a small 40S subunit and a large 60S subunit. Together these subunits are composed of 4 RNA species and approximately 80 structurally distinct proteins. RPL3, also named as TARBP-B and MGC104284, belongs to the ribosomal protein L3P family. This protein is a component of the 60S subunit. It can bind to the HIV-1 TAR mRNA, and it has been suggested that the protein contributes to tat-mediated transactivation. As is typical for genes encoding ribosomal proteins, there are multiple processed pseudogenes of this gene dispersed through the genome.

Storage

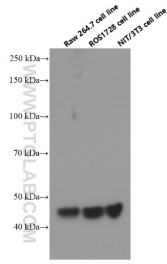
Storage:
Store at -80°C.

Storage Buffer:
PBS Only

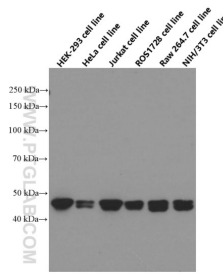
For technical support and original validation data for this product please contact:
T: 1 (888) 4PTGLAB (1-888-478-4522) (toll free in USA), or 1(312) 455-8498 (outside USA) E: proteintech@ptglab.com
W: ptglab.com

This product is exclusively available under Proteintech Group brand and is not available to purchase from any other manufacturer.

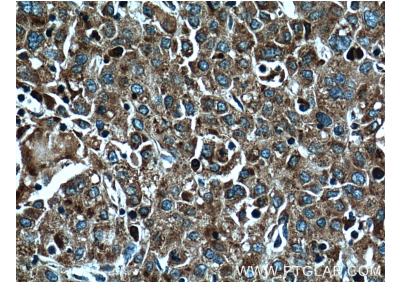
Selected Validation Data



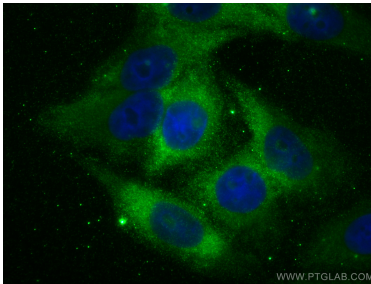
Western blot analysis of RPL3 in various cell lines using Proteintech antibody 66130-1-Ig at dilution of 1:4000 incubated at room temperature for 1.5 hours. This data was developed using the same antibody clone with 66130-1-PBS in a different storage buffer formulation.



Western blot analysis of RPL3 in various cell lines and tissues using Proteintech antibody 66130-1-Ig at dilution of 1:5000 incubated at room temperature for 1.5 hours. This data was developed using the same antibody clone with 66130-1-PBS in a different storage buffer formulation.



Immunohistochemical analysis of paraffin-embedded human liver cancer tissue slide using 66130-1-Ig (RPL3 Antibody) at dilution of 1:600 (under 40x lens). Heat mediated antigen retrieval with Tris-EDTA buffer (pH 9.0). This data was developed using the same antibody clone with 66130-1-PBS in a different storage buffer formulation.



Immunofluorescent analysis of (-20°C Ethanol) fixed HepG2 cells using RPL3 antibody (66130-1-Ig, Clone: 2G1B8) at dilution of 1:800 and CoraLite®488-Conjugated AffiniPure Goat Anti-Mouse IgG(H+L). This data was developed using the same antibody clone with 66130-1-PBS in a different storage buffer formulation.