

For Research Use Only

# APOL1-Specific Monoclonal antibody, PBS Only



Catalog Number: 66124-1-PBS

Featured Product

## Basic Information

<b>Catalog Number:</b> 66124-1-PBS	<b>GenBank Accession Number:</b> BC017331	<b>Purification Method:</b> Protein A purification
<b>Size:</b> 100ug , Concentration: 1mg/ml by Nanodrop;	<b>GeneID (NCBI):</b> 8542	<b>CloneNo.:</b> 1G12D11
<b>Source:</b> Mouse	<b>UNIPROT ID:</b> O14791	
<b>Isotype:</b> IgG2a	<b>Full Name:</b> apolipoprotein L, 1	
<b>Immunogen Catalog Number:</b> AG2016	<b>Calculated MW:</b> 44 kDa	
	<b>Observed MW:</b> 39-45 kDa	

## Applications

**Tested Applications:**  
WB, IP, IF, IHC, ELISA

**Species Specificity:**  
human

## Background Information

Human apolipo-protein L1 (APOL1) is a minor component of plasma high density lipoprotein (HDL) particles, acting as an interacting protein of apolipoprotein A1 (ApoA1). The human ApoL protein family was thought to be predominantly involved in lipid transport and metabolism. APOL1 is also involved in host innate immunity against Trypanosoma parasites. Once activated, APOL1 can lyse the parasite and protect human from infection. Genetic variants in APOL1 gene, which are found in African ancestry with high frequency, associate with chronic kidney disease, like focal segmental glomerulosclerosis (FSGS), HIV-associated nephropathy (HIVAN), and hypertensive nephropathy. APOL1 share structural and functional similarities with proteins of the Bcl-2 family and may has roles in apoptosis and autophagy. It is notable that APOL1 exists only in human and a few other primate species, and mouse does not express an APOL1 orthologue. This antibody recognizes the endogenous ApoL1 of 39-45 kDa in blood lysate. This antibody is specific to APOL1.

## Storage

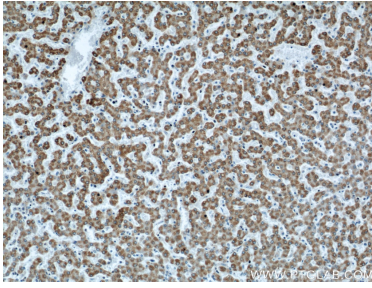
**Storage:**  
Store at -80°C.

**Storage Buffer:**  
PBS Only

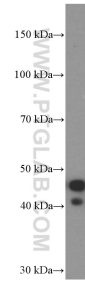
For technical support and original validation data for this product please contact:  
T: 1 (888) 4PTGLAB (1-888-478-4522) (toll free in USA), or 1(312) 455-8498 (outside USA)  
E: proteintech@ptglab.com  
W: ptglab.com

This product is exclusively available under Proteintech Group brand and is not available to purchase from any other manufacturer.

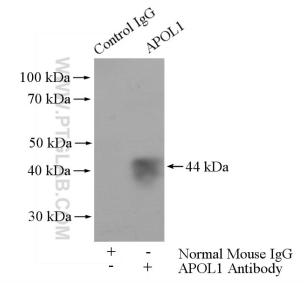
## Selected Validation Data



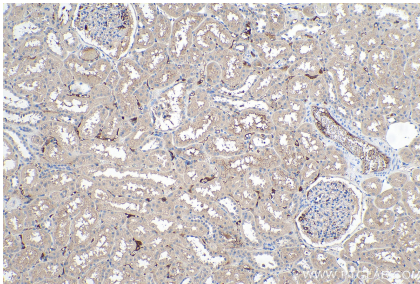
Immunohistochemical analysis of paraffin-embedded human liver using 66124-1-Ig(APOL1 antibody) at dilution of 1:500 (under 10x lens). This data was developed using the same antibody clone with 66124-1-PBS in a different storage buffer formulation.



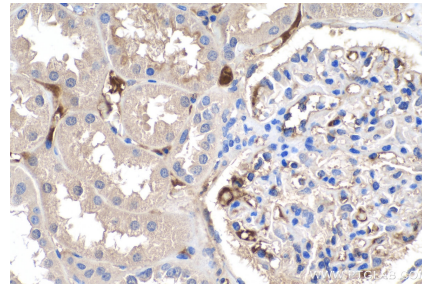
1.5 ug human plasma was subjected to SDS PAGE followed by western blot with 66124-1-Ig (APOL1 Antibody) at dilution of 1:400,000 incubated at room temperature for 1.5 hours. This data was developed using the same antibody clone with 66124-1-PBS in a different storage buffer formulation.



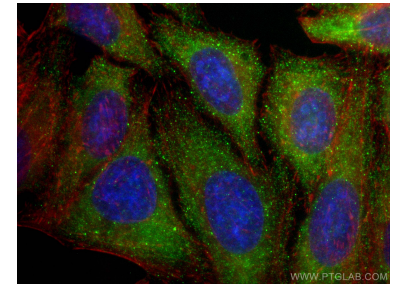
IP result of anti-APOL1-Specific (IP:66124-1-Ig, 5ug; Detection:66124-1-Ig 1:10000) with human plasma lysate 4000ug. This data was developed using the same antibody clone with 66124-1-PBS in a different storage buffer formulation.



Immunohistochemical analysis of paraffin-embedded human kidney tissue slide using 66124-1-Ig (APOL1-Specific antibody) at dilution of 1:5000 (under 10x lens). Heat mediated antigen retrieval with Tris-EDTA buffer (pH 9.0). This data was developed using the same antibody clone with 66124-1-PBS in a different storage buffer formulation.



Immunohistochemical analysis of paraffin-embedded human kidney tissue slide using 66124-1-Ig (APOL1-Specific antibody) at dilution of 1:5000 (under 40x lens). Heat mediated antigen retrieval with Tris-EDTA buffer (pH 9.0). This data was developed using the same antibody clone with 66124-1-PBS in a different storage buffer formulation.



Immunofluorescent analysis of (-20°C Ethanol) fixed HepG2 cells using APOL1-Specific antibody (66124-1-Ig, Clone: 1G12D11) at dilution of 1:400 and CoraLite®488-Conjugated AffiniPure Goat Anti-Mouse IgG(H+L) (SA00013-1), CL594-phalloidin (red). This data was developed using the same antibody clone with 66124-1-PBS in a different storage buffer formulation.