

For Research Use Only

RAC1 Monoclonal antibody, PBS Only



Catalog Number: 66122-1-PBS

Featured Product

Basic Information

Catalog Number:

66122-1-PBS

Size:

100ug, Concentration: 1 mg/ml by Nanodrop;

Source:

Mouse

Isotype:

IgG2b

Immunogen Catalog Number:

AG17779

GenBank Accession Number:

BC004247

GeneID (NCBI):

5879

UNIPROT ID:

P63000

Full Name:

ras-related C3 botulinum toxin substrate 1 (rho family, small GTP binding protein Rac1)

Calculated MW:

21 kDa

Observed MW:

21 kDa

Purification Method:

Protein A purification

CloneNo.:

4A4B11

Applications

Tested Applications:

WB, IP, IF, IHC, ELISA

Species Specificity:

human, mouse, rat

Background Information

RAC1b, also named as TC25, belongs to the small GTPase superfamily and Rho family. RAC1 is a plasma membrane-associated small GTPase which cycles between active GTP-bound and inactive GDP-bound states. In its active state, it binds to a variety of effector proteins to regulate cellular responses such as secretory processes, phagocytosis of apoptotic cells, epithelial cell polarization and growth-factor induced formation of membrane ruffles.

Storage

Storage:

Store at -80°C.

Storage Buffer:

PBS only

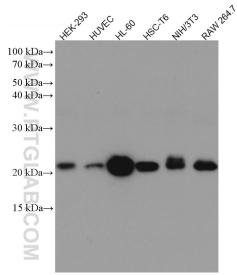
For technical support and original validation data for this product please contact:

T: 1 (888) 4PTGLAB (1-888-478-4522) (toll free in USA), or 1(312) 455-8498 (outside USA)

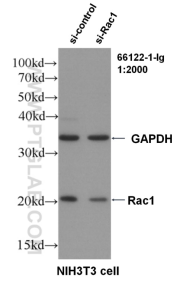
E: proteintech@ptglab.com
W: ptglab.com

This product is exclusively available under Proteintech Group brand and is not available to purchase from any other manufacturer.

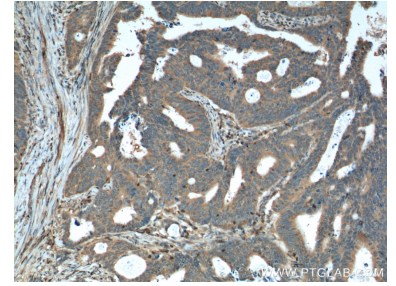
Selected Validation Data



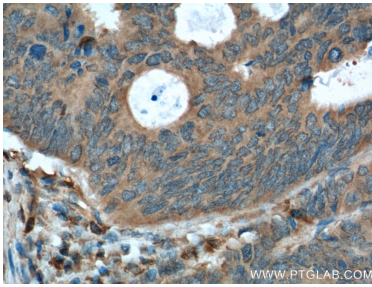
Various lysates were subjected to SDS PAGE followed by western blot with 66122-1-Ig (Rac1 antibody) at dilution of 1:5000 incubated at room temperature for 1.5 hours. This data was developed using the same antibody clone with 66122-1-PBS in a different storage buffer formulation.



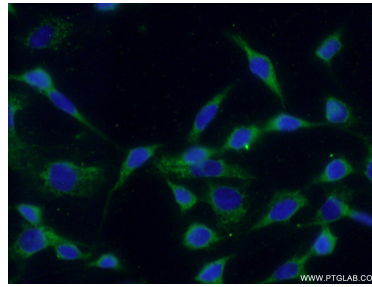
WB result of RAC1 antibody (66122-1-Ig, 1:2000) with si-control and si-RAC1 transfected NIH3T3 cells. This data was developed using the same antibody clone with 66122-1-PBS in a different storage buffer formulation.



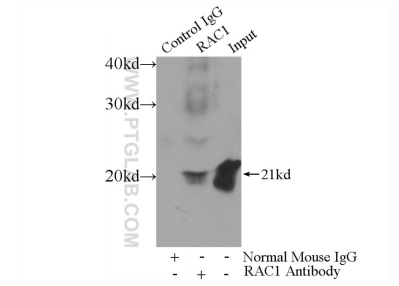
Immunohistochemical analysis of paraffin-embedded human colon cancer tissue slide using 66122-1-Ig (RAC1 Antibody) at dilution of 1:400 (under 10x lens). This data was developed using the same antibody clone with 66122-1-PBS in a different storage buffer formulation.



Immunohistochemical analysis of paraffin-embedded human colon cancer tissue slide using 66122-1-Ig (RAC1 Antibody) at dilution of 1:400 (under 40x lens). This data was developed using the same antibody clone with 66122-1-PBS in a different storage buffer formulation.



Immunofluorescent analysis of (-20°C Ethanol) fixed NIH/3T3 cells using 66122-1-Ig(Rac1 antibody) at dilution of 1:100 and Alexa Fluor 488-conjugated AffiniPure Goat Anti-Mouse IgG(H+L). This data was developed using the same antibody clone with 66122-1-PBS in a different storage buffer formulation.



IP result of anti-RAC1 (IP:66122-1-Ig, 3ug; Detection:66122-1-Ig 1:700) with HL-60 cells lysate 4000ug. This data was developed using the same antibody clone with 66122-1-PBS in a different storage buffer formulation.