

For Research Use Only

ECHS1 Monoclonal antibody

Catalog Number: 66117-1-Ig

Featured Product

6 Publications



Basic Information

Catalog Number:

66117-1-Ig

Size:

150ul, Concentration: 1207 µg/ml by Bradford method using BSA as the standard;

Source:

Mouse

Isotype:

IgG2b

Immunogen Catalog Number:

AG16775

GenBank Accession Number:

BC008906

GeneID (NCBI):

1892

UNIPROT ID:

P30084

Full Name:

enoyl Coenzyme A hydratase, short chain, 1, mitochondrial

Calculated MW:

31 kDa

Observed MW:

31 kDa

Purification Method:

Protein A purification

CloneNo.:

2B9D5

Recommended Dilutions:

WB 1:2000-1:20000

IP 0.5-4.0 µg for 1.0-3.0 mg of total protein lysate

IHC 1:50-1:1000

IF/ICC 1:400-1:1600

Applications

Tested Applications:

WB, IHC, IF/ICC, IP, ELISA

Cited Applications:

WB, IF, IP

Species Specificity:

human

Cited Species:

human, mouse

Positive Controls:

WB: HeLa cells, HepG2 cells, human testis tissue, MCF-7 cells, PC-3 cells, HEK-293 cells, L02 cells, COLO 320 cells, T47D cells

IP: HepG2 cells,

IHC: human prostate cancer tissue, human liver tissue

IF/ICC: HeLa cells,

Note-IHC: suggested antigen retrieval with TE buffer pH 9.0; (*) Alternatively, antigen retrieval may be performed with citrate buffer pH 6.0

Background Information

Enoyl-coenzyme A hydratase (ECHS1) is a mitochondrial protein which catalyzes the hydration of 2-trans-enoyl-coenzyme A intermediates to L-3-hydroxyacyl-coenzyme A, playing key role in metabolism of fatty acids in mitochondria. ECHS1 is highly expressed in muscle, liver and fibroblasts. Altered expression of ECHS1 has been considered as a characteristic feature of mitochondria dysfunction. (23275097, 23235493)

Notable Publications

Author	Pubmed ID	Journal	Application
Wei-Dong Xu	25281561	J Proteomics	WB
Rui Li	34615856	Cell Death Dis	WB,IF,IP
Tobias B Haack	26000322	Ann Clin Transl Neurol	WB

Storage

Storage:

Store at -20°C. Stable for one year after shipment.

Storage Buffer:

PBS with 0.02% sodium azide and 50% glycerol pH 7.3.

Aliquoting is unnecessary for -20°C storage

*** 20ul sizes contain 0.1% BSA

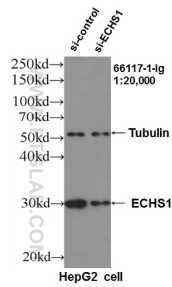
For technical support and original validation data for this product please contact:

T: 1 (888) 4PTGLAB (1-888-478-4522) (toll free in USA), or 1(312) 455-8498 (outside USA)

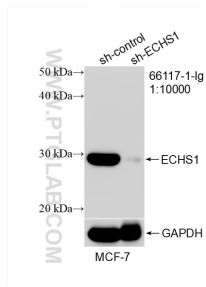
E: proteintech@ptglab.com
W: ptglab.com

This product is exclusively available under Proteintech Group brand and is not available to purchase from any other manufacturer.

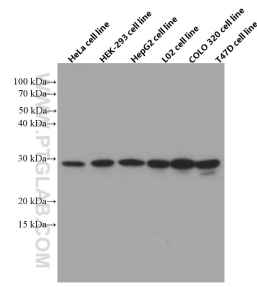
Selected Validation Data



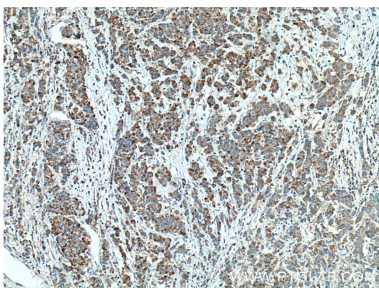
WB result of ECHS1 antibody (66117-1-Ig, 1:20,000) with si-Control and si-ECHS1 transfected HepG2 cells.



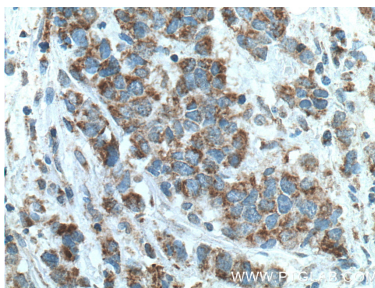
WB result of ECHS1 antibody (66117-1-Ig; 1:10000; incubated at room temperature for 1.5 hours) with sh-Control and sh-ECHS1 transfected MCF-7 cells.



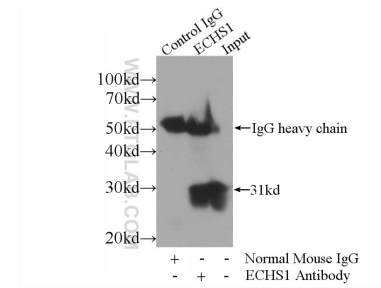
Various cells were subjected to SDS PAGE followed by western blot with 66117-1-Ig (ECHS1 antibody) at dilution of 1:20000 incubated at room temperature for 1.5 hours.



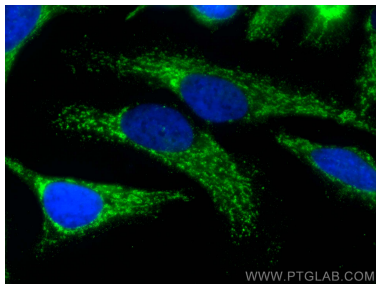
Immunohistochemical analysis of paraffin-embedded human prostate cancer tissue slide using 66117-1-Ig (ECHS1 antibody) at dilution of 1:1000 (under 10x lens. Heat mediated antigen retrieval with Tris-EDTA buffer (pH 9.0).



Immunohistochemical analysis of paraffin-embedded human prostate cancer tissue slide using 66117-1-Ig (ECHS1 antibody) at dilution of 1:1000 (under 40x lens. Heat mediated antigen retrieval with Tris-EDTA buffer (pH 9.0).



IP result of anti-ECHS1 (IP:66117-1-Ig, 3ug; Detection:66117-1-Ig 1:1000) with HepG2 cells lysate 3600ug.



Immunofluorescent analysis of (-20°C Methanol) fixed HeLa cells using ECHS1 antibody (66117-1-Ig, Clone: 2B9D5) at dilution of 1:800 and CoraLite®488-Conjugated AffiniPure Goat Anti-Mouse IgG(H+L).