

For Research Use Only

AFM Monoclonal antibody, PBS Only

Catalog Number: 66113-1-PBS



Basic Information

Catalog Number:

66113-1-PBS

Size:

100ug, Concentration: 1 mg/ml by Nanodrop;

Source:

Mouse

Isotype:

IgG1

Immunogen Catalog Number:

AG16866

GenBank Accession Number:

BC109020

GeneID (NCBI):

173

UNIPROT ID:

P43652

Full Name:

afamin

Calculated MW:

599 aa, 69 kDa

Observed MW:

85 kDa

Purification Method:

Protein G purification

CloneNo.:

2G9F6

Applications

Tested Applications:

WB, IP, IF, IHC, Indirect ELISA

Species Specificity:

human, mouse

Background Information

AFM (Afamin) is a member of the albumin superfamily, which comprises albumin, vitamin D-binding protein, a-fetoprotein, and afamin. AFM is present in the plasma/serum, cerebrospinal fluid, and follicular fluid, and functions as a vitamin E-binding protein. Alterations of expression level of AFM have been linked to variety of diseases like cancer.

Storage

Storage:

Store at -80°C.

Storage Buffer:

PBS Only

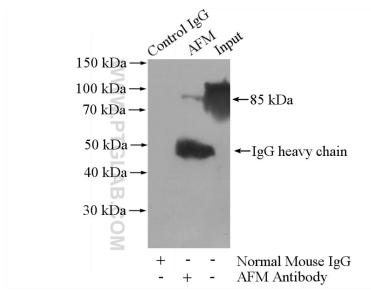
For technical support and original validation data for this product please contact:

T: 1 (888) 4PTGLAB (1-888-478-4522) (toll free in USA), or 1(312) 455-8498 (outside USA)

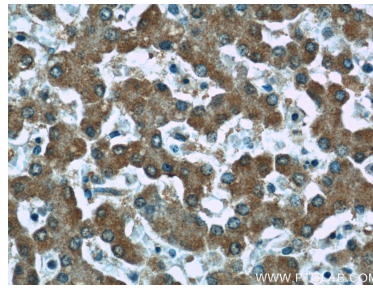
E: proteintech@ptglab.com
W: ptglab.com

This product is exclusively available under Proteintech Group brand and is not available to purchase from any other manufacturer.

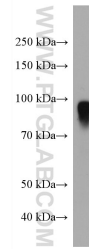
Selected Validation Data



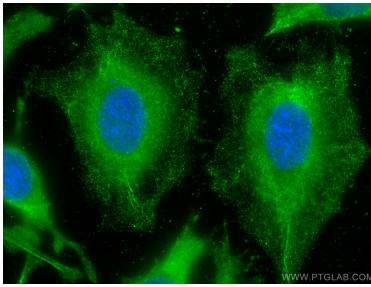
IP result of anti-AFM (IP:66113-1-Ig, 5 μ g; Detection:66113-1-Ig 1:500) with human plasma lysate 4000 μ g. This data was developed using the same antibody clone with 66113-1-PBS in a different storage buffer formulation.



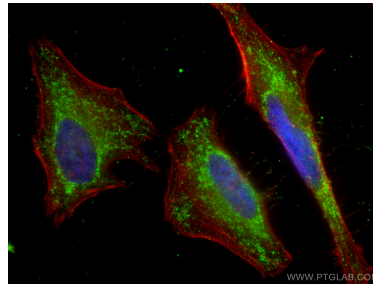
Immunohistochemical analysis of paraffin-embedded human liver tissue slide using 66113-1-Ig (AFM Antibody) at dilution of 1:50. This data was developed using the same antibody clone with 66113-1-PBS in a different storage buffer formulation.



human plasma were subjected to SDS PAGE followed by western blot with 66113-1-Ig (AFM antibody) at dilution of 1:5000 incubated at room temperature for 1.5 hours. This data was developed using the same antibody clone with 66113-1-PBS in a different storage buffer formulation.



Immunofluorescent analysis of (-20°C Methanol) fixed HeLa cells using AFM antibody (66113-1-Ig, Clone: 2G9F6) at dilution of 1:800 and CoraLite®488-Conjugated AffiniPure Goat Anti-Mouse IgG(H+L). This data was developed using the same antibody clone with 66113-1-PBS in a different storage buffer formulation.



Immunofluorescent analysis of (-20°C Ethanol) fixed HeLa cells using AFM antibody (66113-1-Ig, Clone: 2G9F6) at dilution of 1:400 and CoraLite®488-Conjugated AffiniPure Goat Anti-Mouse IgG(H+L), CL594-Phalloidin (red). This data was developed using the same antibody clone with 66113-1-PBS in a different storage buffer formulation.