

For Research Use Only

SNRPD2 Monoclonal antibody, PBS Only



Catalog Number: 66111-1-PBS

Basic Information

Catalog Number: 66111-1-PBS	GenBank Accession Number: BC000486	Purification Method: Protein A purification
Size: 100ug , Concentration: 1 mg/ml by Nanodrop;	GeneID (NCBI): 6633	CloneNo.: 1F12B2
Source: Mouse	UNIPROT ID: P62316	
Isotype: IgG2b	Full Name: small nuclear ribonucleoprotein D2 polypeptide 16.5kDa	
Immunogen Catalog Number: AG7115	Calculated MW: 14 kDa	
	Observed MW: 14-16 kDa	

Applications

Tested Applications:
WB, Indirect ELISA

Species Specificity:
human

Background Information

Systemic lupus erythematosus is characterized by antibodies to a variety of intracellular self-antigens, such as dsDNA and Sm, and these serve as hallmarks in the diagnosis of systemic autoimmune diseases. SNRPD2 is one of Sm protein, and is required for pre-mRNA splicing, snRNP biogenesis.

Storage

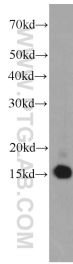
Storage:
Store at -80°C.

Storage Buffer:
PBS Only

For technical support and original validation data for this product please contact:
T: 1 (888) 4PTGLAB (1-888-478-4522) (toll free in USA), or 1(312) 455-8498 (outside USA) E: proteintech@ptglab.com
W: ptglab.com

This product is exclusively available under Proteintech Group brand and is not available to purchase from any other manufacturer.

Selected Validation Data



HeLa cells were subjected to SDS PAGE followed by western blot with 66111-1-Ig (SNRPD2 antibody) at dilution of 1:1000 incubated at room temperature for 1.5 hours. This data was developed using the same antibody clone with 66111-1-PBS in a different storage buffer formulation.