

For Research Use Only

Clusterin Monoclonal antibody, PBS Only

Catalog Number: 66109-1-PBS



Basic Information

Catalog Number: 66109-1-PBS	GenBank Accession Number: BC010514	Purification Method: Protein G purification
Size: 100ug , Concentration: 1mg/ml by Nanodrop;	GeneID (NCBI): 1191	CloneNo.: 2F12G10
Source: Mouse	UNIPROT ID: P10909	
Isotype: IgG1	Full Name: clusterin	
Immunogen Catalog Number: AG19236	Calculated MW: 449 aa, 53 kDa	
	Observed MW: 36 kDa	

Applications

Tested Applications:
WB, IHC, Indirect ELISA

Species Specificity:
human

Background Information

Clusterin (Apolipoprotein J) is a 75-80 kDa heterodimeric glycoprotein produced by a wide array of tissues and found in most biologic fluids (PMID: 7648419; 11906815). It is encoded by one single gene and cleaved posttranslationally into α (34-36 kDa) and β (36-39 kDa) subunits prior to secretion from the cell. Many functions have been described for clusterin, including regulating apoptosis, transporting lipids, controlling cell interactions, regulating complement (PMID: 10694874).

Storage

Storage:
Store at -80°C.

Storage Buffer:
PBS Only

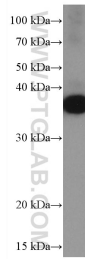
For technical support and original validation data for this product please contact:

T: 1 (888) 4PTGLAB (1-888-478-4522) (toll free in USA), or 1(312) 455-8498 (outside USA)

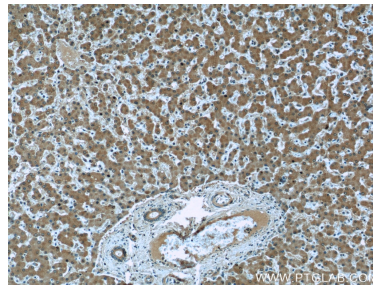
E: proteintech@ptglab.com
W: ptglab.com

This product is exclusively available under Proteintech Group brand and is not available to purchase from any other manufacturer.

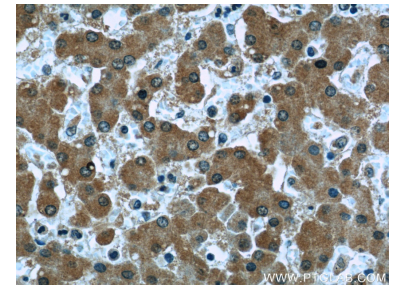
Selected Validation Data



human plasma were subjected to SDS PAGE followed by western blot with 66109-1-Ig (Clusterin antibody) at dilution of 1:20000 incubated at room temperature for 1.5 hours. This data was developed using the same antibody clone with 66109-1-PBS in a different storage buffer formulation.



Immunohistochemical analysis of paraffin-embedded human liver slide using 66109-1-Ig (Clusterin antibody at dilution of 1:50 (under 10x lens). This data was developed using the same antibody clone with 66109-1-PBS in a different storage buffer formulation.



Immunohistochemical analysis of paraffin-embedded human liver slide using 66109-1-Ig (Clusterin antibody at dilution of 1:50 (under 40x lens). This data was developed using the same antibody clone with 66109-1-PBS in a different storage buffer formulation.