

For Research Use Only

PGM1 Monoclonal antibody, PBS Only



Catalog Number: 66105-1-PBS

Basic Information

Catalog Number: 66105-1-PBS	GenBank Accession Number: BC001756	Purification Method: Protein A purification
Size: 100ug , Concentration: 1mg/ml by Nanodrop;	GeneID (NCBI): 5236	CloneNo.: 2G5A8
Source: Mouse	UNIPROT ID: P36871	
Isotype: IgG2b	Full Name: phosphoglucomutase 1	
Immunogen Catalog Number: AG7294	Calculated MW: 61 kDa	
	Observed MW: 61 kDa	

Applications

Tested Applications:
WB, IF, IHC, Indirect ELISA

Species Specificity:
human, mouse, rat, rabbit, pig

Background Information

PGM1(Phosphoglucomutase-1) is also named as glucose phosphomutase 1 and belongs to the phosphohexose mutase family. It catalyzes the transfer of phosphate between the 1 and 6 positions of glucose. In most cell types, PGM1 isozymes predominate, representing about 90% of total PGM activity. One exception is red cells, where PGM2 is a major isozyme(PMID:8257433). Defects in PGM1 are the cause of glycogen storage disease type 14 (GSD14) (PMID:19625727). It has 2 isoforms produced by alternative splicing.

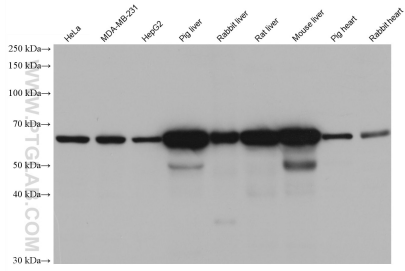
Storage

Storage:
Store at -80°C.
Storage Buffer:
PBS Only

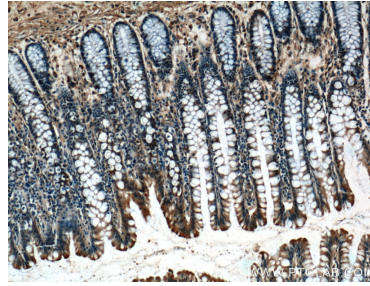
For technical support and original validation data for this product please contact:
T: 1 (888) 4PTGLAB (1-888-478-4522) (toll free in USA), or 1(312) 455-8498 (outside USA) E: proteintech@ptglab.com
W: ptglab.com

This product is exclusively available under Proteintech Group brand and is not available to purchase from any other manufacturer.

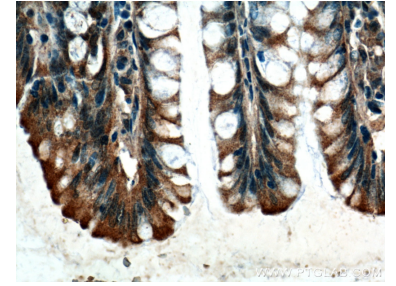
Selected Validation Data



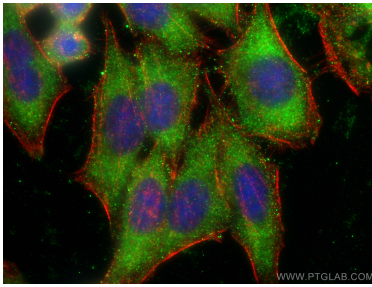
Various lysates were subjected to SDS PAGE followed by western blot with 66105-1-Ig (PGM1 antibody) at dilution of 1:5000 incubated at room temperature for 1.5 hours. This data was developed using the same antibody clone with 66105-1-PBS in a different storage buffer formulation.



Immunohistochemical analysis of paraffin-embedded human colon tissue slide using 66105-1-Ig (PGM1 Antibody) at dilution of 1:200 (under 10x lens). This data was developed using the same antibody clone with 66105-1-PBS in a different storage buffer formulation.



Immunohistochemical analysis of paraffin-embedded human colon tissue slide using 66105-1-Ig (PGM1 Antibody) at dilution of 1:200 (under 40x lens). This data was developed using the same antibody clone with 66105-1-PBS in a different storage buffer formulation.



Immunofluorescent analysis of (-20°C Ethanol) fixed HepG2 cells using PGM1 antibody (66105-1-Ig, Clone: 2G5A8) at dilution of 1:1000 and CoraLite®488-Conjugated AffiniPure Goat Anti-Mouse IgG(H+L), CL594-phalloidin (red). This data was developed using the same antibody clone with 66105-1-PBS in a different storage buffer formulation.