

For Research Use Only

# S100A6 Monoclonal antibody

Catalog Number: 66098-1-Ig **1 Publications**



## Basic Information

<b>Catalog Number:</b> 66098-1-Ig	<b>GenBank Accession Number:</b> BC001431	<b>Purification Method:</b> Protein A purification
<b>Size:</b> 150ul, Concentration: 800 ug/ml by Nanodrop and 600 ug/ml by Bradford method using BSA as the standard;	<b>GeneID (NCBI):</b> 6277	<b>CloneNo.:</b> 3D11C8
<b>Source:</b> Mouse	<b>UNIPROT ID:</b> P06703	<b>Recommended Dilutions:</b> WB 1:500-1:2000 IHC 1:50-1:500 IF/ICC 1:200-1:800
<b>Isotype:</b> IgG1	<b>Full Name:</b> S100 calcium binding protein A6	
<b>Immunogen Catalog Number:</b> AG17606	<b>Calculated MW:</b> 10 kDa	
	<b>Observed MW:</b> 10 kDa	

## Applications

<b>Tested Applications:</b> WB, IHC, IF/ICC, ELISA	<b>Positive Controls:</b> WB : HeLa cells, A549 cells
<b>Cited Applications:</b> WB	<b>IHC :</b> human colon cancer tissue, human liver cancer tissue, human pancreas cancer tissue
<b>Species Specificity:</b> human	<b>IF/ICC :</b> HepG2 cells,
<b>Cited Species:</b> human	

**Note-IHC: suggested antigen retrieval with TE buffer pH 9.0; (\*) Alternatively, antigen retrieval may be performed with citrate buffer pH 6.0**

## Background Information

S100A6 is also named as calcyclin, prolactin receptor-associated protein (PRA), growth factor-inducible protein 2A9 or MLN4. It belongs to S100 family of low molecular weight, acidic, calcium-binding proteins which contain two EF-hand calcium binding sites. S100A6 may function as a calcium sensor to activate several processes in the calcium signal transduction pathway of cell growth, proliferation, secretion and exocytosis. Although S100A6 is a cytoplasmic protein, it can be located in the nuclear and cytoplasmic membranes in the presence of Ca<sup>2+</sup> (PMID: 37670392).

## Notable Publications

Author	Pubmed ID	Journal	Application
Dongqiang Song	33335992	Open Med (Wars)	WB

## Storage

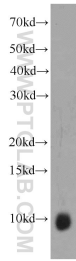
**Storage:**  
Store at -20°C. Stable for one year after shipment.  
**Storage Buffer:**  
PBS with 0.02% sodium azide and 50% glycerol pH 7.3.  
Aliquoting is unnecessary for -20°C storage

\*\*\* 20ul sizes contain 0.1% BSA

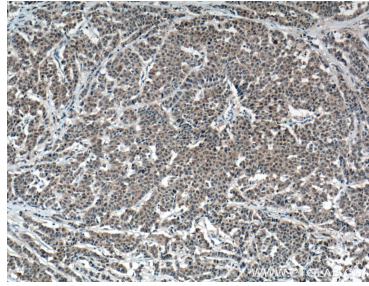
For technical support and original validation data for this product please contact:  
T: 1 (888) 4PTGLAB (1-888-478-4522) (toll free in USA), or 1(312) 455-8498 (outside USA)  
E: proteintech@ptglab.com  
W: ptglab.com

This product is exclusively available under Proteintech Group brand and is not available to purchase from any other manufacturer.

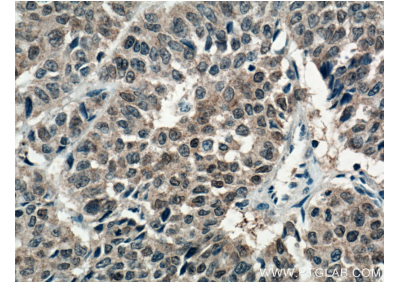
## Selected Validation Data



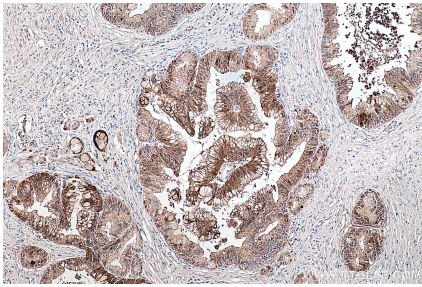
HeLa cells were subjected to SDS PAGE followed by western blot with 66098-1-Ig (S100A6 antibody) at dilution of 1:1000 incubated at room temperature for 1.5 hours.



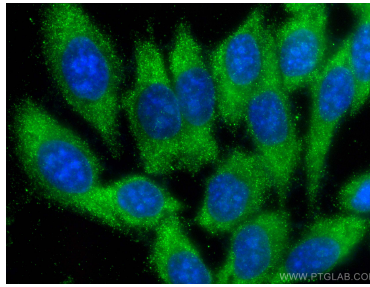
Immunohistochemical analysis of paraffin-embedded human colon cancer tissue slide using 66098-1-Ig (S100A6 antibody) at dilution of 1:200 (under 10x lens. Heat mediated antigen retrieval with Tris-EDTA buffer (pH 9.0).



Immunohistochemical analysis of paraffin-embedded human colon cancer tissue slide using 66098-1-Ig (S100A6 antibody) at dilution of 1:200 (under 40x lens. Heat mediated antigen retrieval with Tris-EDTA buffer (pH 9.0).



Immunohistochemical analysis of paraffin-embedded human pancreas cancer tissue slide using 66098-1-Ig (S100A6 antibody) at dilution of 1:4000 (under 10x lens). Heat mediated antigen retrieval with Tris-EDTA buffer (pH 9.0).



Immunofluorescent analysis of (-20°C Ethanol) fixed HepG2 cells using S100A6 antibody (66098-1-Ig, Clone: 3D11C8) at dilution of 1:400 and Coralite®488-Conjugated AffiniPure Goat Anti-Mouse IgG(H+L).