

For Research Use Only

MLPH Monoclonal antibody, PBS Only

Catalog Number: 66092-1-PBS



Basic Information

Catalog Number: 66092-1-PBS	GenBank Accession Number: BC001653	Purification Method: Protein A purification
Size: 100ug , Concentration: 1 mg/ml by Nanodrop;	GeneID (NCBI): 79083	CloneNo.: 1A8D12
Source: Mouse	UNIPROT ID: Q9BV36	
Isotype: IgG1	Full Name: melanophilin	
Immunogen Catalog Number: AG19286	Calculated MW: 66 kDa	
	Observed MW: 66 kDa	

Applications

Tested Applications:
WB, IHC, IF/ICC, ELISA

Species Specificity:
human, pig

Background Information

Melanophilin (MLPH) is a member of the exophilin subfamily of Rab effector proteins. MLPH is a modular protein, forming a ternary complex with the small Ras-related GTPase Rab27A in its GTP-bound form and the motor protein myosin Va. It regulates retention of melanosomes at the peripheral actin cytoskeleton of melanocytes, a process essential for normal mammalian pigmentation. Defects in MLPH are a cause of Griscelli syndrome type 3 (GS3), which is characterized by a silver-gray hair color and abnormal pigment distribution in the hair shaft.

Storage

Storage:
Store at -80°C.

Storage Buffer:
PBS only

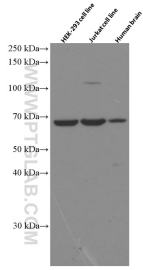
For technical support and original validation data for this product please contact:

T: 1 (888) 4PTGLAB (1-888-478-4522) (toll free in USA), or 1(312) 455-8498 (outside USA)

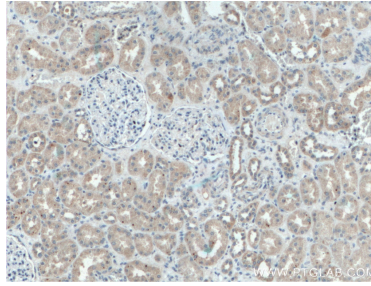
E: proteintech@ptglab.com
W: ptglab.com

This product is exclusively available under Proteintech Group brand and is not available to purchase from any other manufacturer.

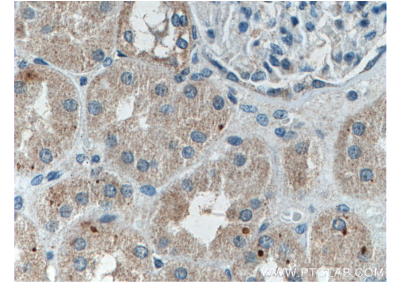
Selected Validation Data



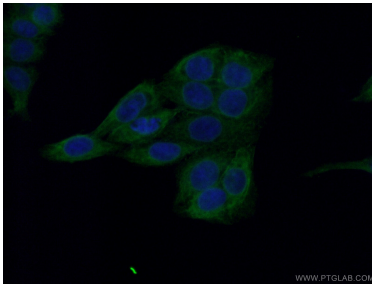
Various lysates were subjected to SDS PAGE followed by western blot with 66092-1-Ig (Melanophilin antibody) at dilution of 1:3000 incubated at room temperature for 1.5 hours. This data was developed using the same antibody clone with 66092-1-PBS in a different storage buffer formulation.



Immunohistochemical analysis of paraffin-embedded human kidney tissue slide using 66092-1-Ig (Melanophilin antibody) at dilution of 1:200 (under 10x lens). This data was developed using the same antibody clone with 66092-1-PBS in a different storage buffer formulation.



Immunohistochemical analysis of paraffin-embedded human kidney tissue slide using 66092-1-Ig (Melanophilin antibody) at dilution of 1:200 (under 40x lens). This data was developed using the same antibody clone with 66092-1-PBS in a different storage buffer formulation.



Immunofluorescent analysis of (-20°C Ethanol) fixed HepG2 cells using 66092-1-Ig (Melanophilin antibody) at dilution of 1:100 and Alexa Fluor 488-Conjugated Goat Anti-Mouse IgG(H+L). This data was developed using the same antibody clone with 66092-1-PBS in a different storage buffer formulation.