

For Research Use Only

FKBP2 Monoclonal antibody, PBS Only



Catalog Number: 66091-1-PBS

Basic Information

Catalog Number: 66091-1-PBS	GenBank Accession Number: BC003384	Purification Method: Protein G purification
Size: 100ug , Concentration: 1mg/ml by Nanodrop;	GeneID (NCBI): 2286	CloneNo.: 2H7E8
Source: Mouse	UNIPROT ID: P26885	
Isotype: IgG1	Full Name: FK506 binding protein 2, 13kDa	
Immunogen Catalog Number: AG19113	Calculated MW: 142 aa, 16 kDa	
	Observed MW: 16 kDa	

Applications

Tested Applications:
WB, IHC, Indirect ELISA

Species Specificity:
human, rat, pig

Background Information

FKBP2 is also named as FKBP13 and belongs to the FKBP-type PPIase family. It catalyzes the cis-trans isomerization of proline imidic peptide bonds in oligopeptides. FKBP2 has a 21-amino acid signal peptide and appears to be membrane-associated (PMID:1713687). It is localized to the lumen of the endoplasmic reticulum (ER). FKBP12 and FKBP13 are highly similar proteins, of molecular masses 12 kDa and 13 kDa respectively, with approx. 43 % amino acid identity. The strong homology between FKBP12 and FKBP13 suggests that they may share similar biological functions, although, apart from rotamase activity, details relating to the function of either protein are scant (PMID:8373365).

Storage

Storage:
Store at -80°C.

Storage Buffer:
PBS Only

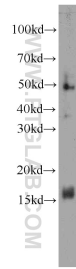
For technical support and original validation data for this product please contact:

T: 1 (888) 4PTGLAB (1-888-478-4522) (toll free in USA), or 1(312) 455-8498 (outside USA)

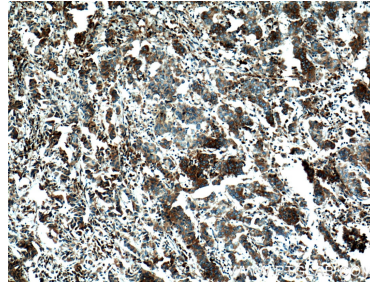
E: proteintech@ptglab.com
W: ptglab.com

This product is exclusively available under Proteintech Group brand and is not available to purchase from any other manufacturer.

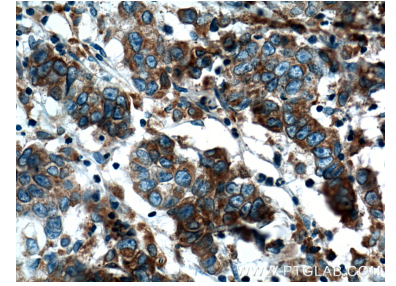
Selected Validation Data



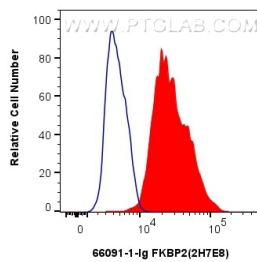
human cerebellum tissue were subjected to SDS PAGE followed by western blot with 66091-1-Ig (FKBP2 antibody) at dilution of 1:500 incubated at room temperature for 1.5 hours. This data was developed using the same antibody clone with 66091-1-PBS in a different storage buffer formulation.



Immunohistochemical analysis of paraffin-embedded human prostate cancer tissue slide using 66091-1-Ig (FKBP2 Antibody) at dilution of 1:200 (under 10x lens). Heat mediated antigen retrieval with Tris-EDTA buffer (pH 9.0). This data was developed using the same antibody clone with 66091-1-PBS in a different storage buffer formulation.



Immunohistochemical analysis of paraffin-embedded human prostate cancer tissue slide using 66091-1-Ig (FKBP2 Antibody) at dilution of 1:200 (under 40x lens). Heat mediated antigen retrieval with Tris-EDTA buffer (pH 9.0). This data was developed using the same antibody clone with 66091-1-PBS in a different storage buffer formulation.



1x10⁶ HepG2 cells were intracellularly stained with 0.4 ug FKBP2 Monoclonal antibody (66091-1-Ig, Clone:2H7E8) and CoraLite®488-Conjugated AffiniPure Goat Anti-Mouse IgG(H+L) (SA00013-1)(red), or 0.4 ug Mouse IgG1 isotype control Mouse McAb (66360-1-Ig, Clone: 1F8D3) (blue). Cells were fixed with 4% PFA and permeabilized with Flow Cytometry Perm Buffer (PF00011-C). This data was developed using the same antibody clone with 66091-1-PBS in a

