

For Research Use Only

NCALD Monoclonal antibody, PBS Only



Catalog Number: 66088-1-PBS

Basic Information

Catalog Number: 66088-1-PBS	GenBank Accession Number: BC036098	Purification Method: Protein A purification
Size: 100ug, Concentration: 1 mg/ml by Nanodrop;	GeneID (NCBI): 83988	CloneNo.: 6B4E10
Source: Mouse	UNIPROT ID: P61601	
Isotype: IgG2a	Full Name: neurocalcin delta	
Immunogen Catalog Number: AG18760	Calculated MW: 193 aa, 22 kDa	
	Observed MW: 22 kDa	

Applications

Tested Applications:
WB, IF, IHC, Indirect ELISA

Species Specificity:
human, mouse, pig, rat

Background Information

NCALD (Neurocalcin-delta) is a member of the EF-hand calcium-binding protein superfamily. It may be involved in the calcium-dependent regulation of rhodopsin phosphorylation. It is a high-affinity Ca²⁺ sensor (K_d of approx. 0.6 uM), which is most abundantly expressed in the Purkinje cells of the cerebellum (PMID:11964161). This antibody is specific to NCALD.

Storage

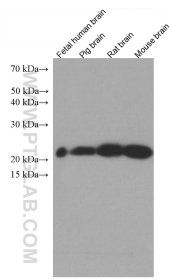
Storage:
Store at -80°C.

Storage Buffer:
PBS Only

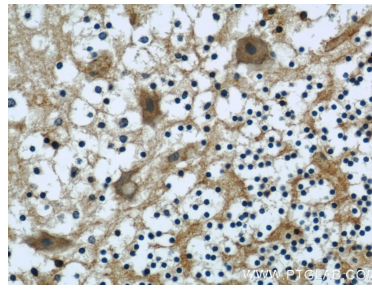
For technical support and original validation data for this product please contact:
T: 1 (888) 4PTGLAB (1-888-478-4522) (toll free in USA), or 1(312) 455-8498 (outside USA) E: proteintech@ptglab.com
W: ptglab.com

This product is exclusively available under Proteintech Group brand and is not available to purchase from any other manufacturer.

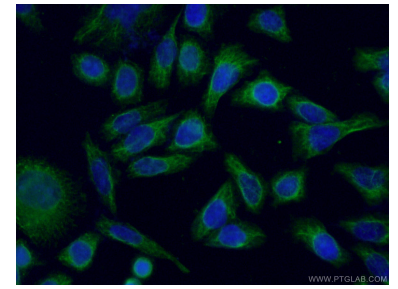
Selected Validation Data



Various lysates were subjected to SDS PAGE followed by western blot with 66088-1-Ig (NCALD antibody) at dilution of 1:1600 incubated at room temperature for 1.5 hours. This data was developed using the same antibody clone with 66088-1-PBS in a different storage buffer formulation.



Immunohistochemical analysis of paraffin-embedded human cerebellum using 66088-1-Ig (NCALD antibody) at dilution of 1:50 (under 40x lens). This data was developed using the same antibody clone with 66088-1-PBS in a different storage buffer formulation.



Immunofluorescent analysis of (-20°C Ethanol) fixed HeLa cells using 66088-1-Ig (NCALD antibody) at dilution of 1:50 and Alexa Fluor 488-Conjugated AffiniPure Goat Anti-Mouse IgG (H+L). This data was developed using the same antibody clone with 66088-1-PBS in a different storage buffer formulation.