

For Research Use Only

Serum Amyloid P/SAP Monoclonal antibody, PBS Only

Catalog Number: 66084-1-PBS



Basic Information

Catalog Number:

66084-1-PBS

Size:

100ug, Concentration: 1mg/ml by Nanodrop;

Source:

Mouse

Isotype:

IgG2b

Immunogen Catalog Number:

AG14957

GenBank Accession Number:

BC007058

GeneID (NCBI):

325

UNIPROT ID:

P02743

Full Name:

amyloid P component, serum

Calculated MW:

223 aa, 25 kDa

Observed MW:

27 kDa

Purification Method:

Protein A purification

CloneNo.:

1A1D10

Applications

Tested Applications:

WB, IHC, IF-P, Indirect ELISA

Species Specificity:

human, mouse

Background Information

Serum amyloid P component (SAP), a member of pentraxin family, is a constitutive serum protein that is synthesized by hepatocytes. It is an acute phase protein, structurally related to C-reactive protein. SAP is a calcium-dependent ligand binding protein, which can interact with DNA and histones and may scavenge nuclear material released from damaged circulating cells.

Storage

Storage:

Store at -80°C.

Storage Buffer:

PBS Only

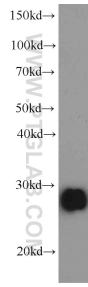
For technical support and original validation data for this product please contact:

T: 1 (888) 4PTGLAB (1-888-478-4522) (toll free in USA), or 1(312) 455-8498 (outside USA)

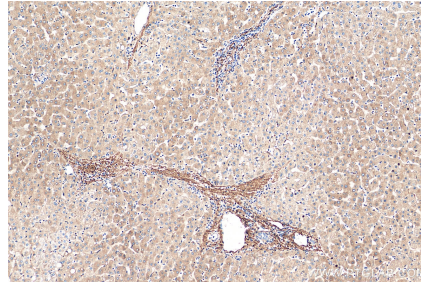
E: proteintech@ptglab.com
W: ptglab.com

This product is exclusively available under Proteintech Group brand and is not available to purchase from any other manufacturer.

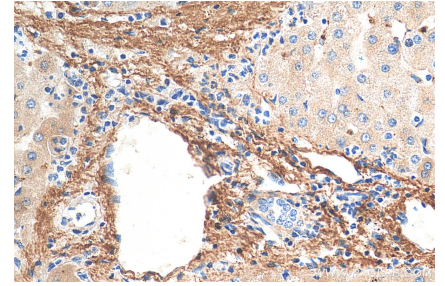
Selected Validation Data



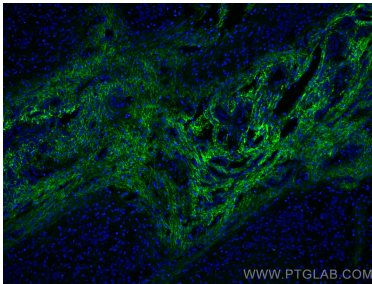
human kidney tissue were subjected to SDS PAGE followed by western blot with 66084-1-Ig (Serum amyloid P component antibody) at dilution of 1:1000 incubated at room temperature for 1.5 hours. This data was developed using the same antibody clone with 66084-1-PBS in a different storage buffer formulation.



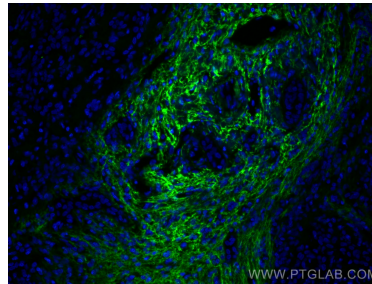
Immunohistochemical analysis of paraffin-embedded human liver tissue slide using 66084-1-Ig (Serum amyloid P component antibody) at dilution of 1:200 (under 10x lens). Heat mediated antigen retrieval with Tris-EDTA buffer (pH 9.0). This data was developed using the same antibody clone with 66084-1-PBS in a different storage buffer formulation.



Immunohistochemical analysis of paraffin-embedded human liver tissue slide using 66084-1-Ig (Serum amyloid P component antibody) at dilution of 1:200 (under 40x lens). Heat mediated antigen retrieval with Tris-EDTA buffer (pH 9.0). This data was developed using the same antibody clone with 66084-1-PBS in a different storage buffer formulation.



Immunofluorescent analysis of (4% PFA) fixed human liver cancer tissue using Serum amyloid P component antibody (66084-1-Ig, Clone: 1A1D10) at dilution of 1:400 and CoraLite®488-Conjugated AffiniPure Goat Anti-Mouse IgG(H+L). This data was developed using the same antibody clone with 66084-1-PBS in a different storage buffer formulation.



Immunofluorescent analysis of (4% PFA) fixed human liver cancer tissue using Serum amyloid P component antibody (66084-1-Ig, Clone: 1A1D10) at dilution of 1:400 and CoraLite®488-Conjugated AffiniPure Goat Anti-Mouse IgG(H+L). This data was developed using the same antibody clone with 66084-1-PBS in a different storage buffer formulation.