

For Research Use Only

TELO2 Monoclonal antibody, PBS Only (Detector)

Catalog Number:66077-1-PBS



Basic Information

Catalog Number: 66077-1-PBS	GenBank Accession Number: BC017188	Purification Method: Protein G purification
Size: 100ug , Concentration: 1mg/ml by Nanodrop;	GeneID (NCBI): 9894	CloneNo.: 3H10F4
Source: Mouse	UNIPROT ID: Q9Y4R8	
Isotype: IgG1	Full Name: TEL2, telomere maintenance 2, homolog (S. cerevisiae)	
Immunogen Catalog Number: AG8834	Calculated MW: 837 aa, 92 kDa	
	Observed MW: 92 kDa	

Applications

Tested Applications:
WB, IHC, IF/ICC, IP, Cytometric bead array, Sandwich ELISA, Indirect ELISA

Species Specificity:
human, rat

Product Information

66077-1-PBS targets TELO2 as part of a matched antibody pair.

MP50016-1: 66077-2-PBS capture and 66077-1-PBS detection (validated in Cytometric bead array, Sandwich ELISA)

Unconjugated mouse monoclonal antibody pair in PBS only (BSA and azide free) storage buffer at a concentration of 1 mg/mL, ready for conjugation.

This conjugation ready format makes antibodies ideal for use in many applications including: ELISAs, multiplex assays requiring matched pairs, mass cytometry, and multiplex imaging applications. Antibody use should be optimized by the end user for each application and assay.

Background Information

TELO2 gene encodes a telomere length regulation protein TEL2 homolog. TELO2 may be involved in telomere length regulation and can form TTT complex with TTI1 and TTI2. TTT complex is required to stabilize protein levels of PIKK family proteins and is involved in the cellular resistance to DNA damage stresses, like ionizing radiation (IR), and ultraviolet (UV). The activity of mTORC1 and mTORC2 complexes, which regulate cell growth and survival in response to nutrient and hormonal signals, can be promoted, stabilized and maintained by TELO2.

Storage

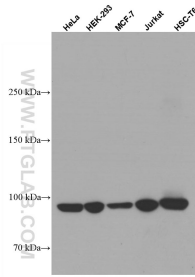
Storage:
Store at -80°C.

Storage Buffer:
100% PBS pH 7.3

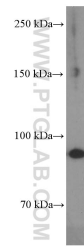
For technical support and original validation data for this product please contact:
T: 1 (888) 4PTGLAB (1-888-478-4522) (toll free in USA), or 1(312) 455-8498 (outside USA) E: proteintech@ptglab.com
W: ptglab.com

This product is exclusively available under Proteintech Group brand and is not available to purchase from any other manufacturer.

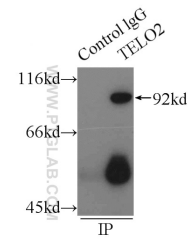
Selected Validation Data



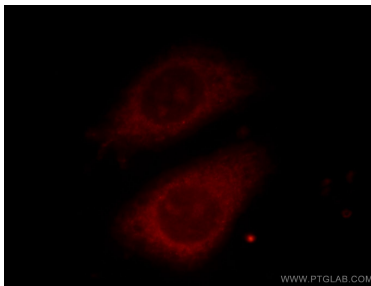
Various lysates were subjected to SDS PAGE followed by western blot with 66077-1-Ig (TELO2 antibody) at dilution of 1:5000 incubated at room temperature for 1.5 hours. This data was developed using the same antibody clone with 66077-1-PBS in a different storage buffer formulation.



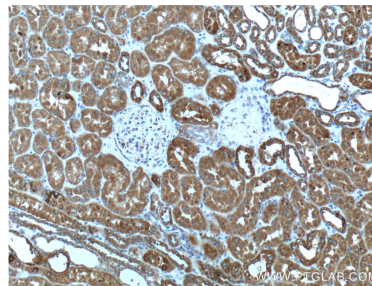
Y79 cells were subjected to SDS PAGE followed by western blot with 66077-1-Ig (TELO2 Antibody) at dilution of 1:2000 incubated at room temperature for 1.5 hours. This data was developed using the same antibody clone with 66077-1-PBS in a different storage buffer formulation.



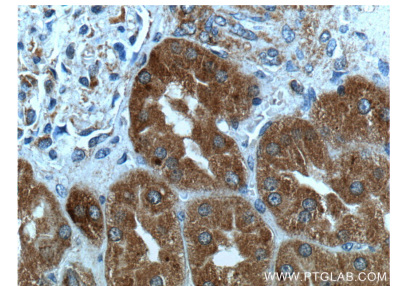
IP result of anti-TELO2 (IP:66077-1-Ig, 4ug; Detection:66077-1-Ig 1:500) with HepG2 cells lysate 2900ug. This data was developed using the same antibody clone with 66077-1-PBS in a different storage buffer formulation.



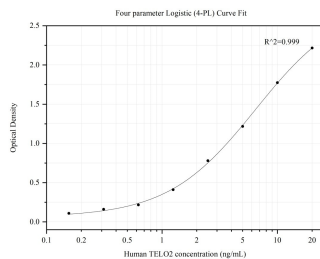
Immunofluorescent analysis of () fixed HepG2 cells using 66077-1-Ig (TELO2 antibody) at dilution of 1:25. This data was developed using the same antibody clone with 66077-1-PBS in a different storage buffer formulation.



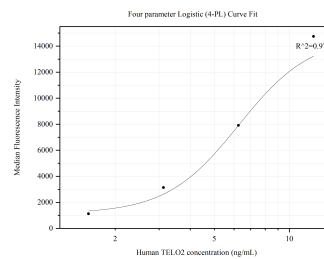
Immunohistochemical analysis of paraffin-embedded human kidney tissue slide using 66077-1-Ig (TELO2 Antibody) at dilution of 1:200 (under 10x lens). This data was developed using the same antibody clone with 66077-1-PBS in a different storage buffer formulation.



Immunohistochemical analysis of paraffin-embedded human kidney tissue slide using 66077-1-Ig (TELO2 Antibody) at dilution of 1:200 (under 40x lens). This data was developed using the same antibody clone with 66077-1-PBS in a different storage buffer formulation.



Sandwich ELISA standard curve of MP50016-1, TELO2 Monoclonal Matched Antibody Pair, PBS Only. Capture antibody: 66077-2-PBS. Detection antibody: HRP-conjugated 66077-1-PBS. Standard: Ag8834. Range: 0.156-20 ng/mL



Cytometric bead array standard curve of MP50016-1, TELO2 Monoclonal Matched Antibody Pair, PBS Only. Capture antibody: 66077-2-PBS. Detection antibody: 66077-1-PBS. Standard: Ag8834. Range: 1.563-12.5 ng/mL