

For Research Use Only

# CPT1C Monoclonal antibody, PBS Only



Catalog Number: 66072-1-PBS

Featured Product

## Basic Information

Catalog Number:

66072-1-PBS

Size:

100ug, Concentration: 1 mg/ml by Nanodrop;

Source:

Mouse

Isotype:

IgG2b

Immunogen Catalog Number:

AG17963

GenBank Accession Number:

BC029104

GeneID (NCBI):

126129

UNIPROT ID:

Q8TCG5

Full Name:

carnitine palmitoyltransferase 1C

Calculated MW:

792 aa, 90 kDa

Observed MW:

82 kDa

Purification Method:

Protein A purification

CloneNo.:

5D11B5

## Applications

Tested Applications:

WB, IHC, Indirect ELISA

Species Specificity:

human, pig

## Background Information

CPT1C, also named as CATL1, CPTI-B and B-CPTI, belongs to the carnitine/choline acetyltransferase family. Carnitine palmitoyltransferase (CPT) deficiencies are common disorders of mitochondrial fatty acid oxidation. The CPT system is made up of two separate proteins located in the outer (CPT1) and inner (CPT2) mitochondrial membranes. CPT1C is an active forms of related brain-type carnitine palmitoyltransferase I. CPT1C may be a regulated target of malonyl-CoA that relays the "malonyl-CoA signal" in hypothalamic neurons that express the orexigenic and anorexigenic neuropeptides that regulate food intake and peripheral energy expenditure. (PMID: 17018521 ) This antibody can bind the close sequences genes.

## Storage

Storage:

Store at -80°C.

Storage Buffer:

PBS Only

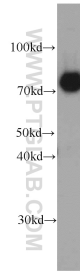
For technical support and original validation data for this product please contact:

T: 1 (888) 4PTGLAB (1-888-478-4522) (toll free in USA), or 1(312) 455-8498 (outside USA)

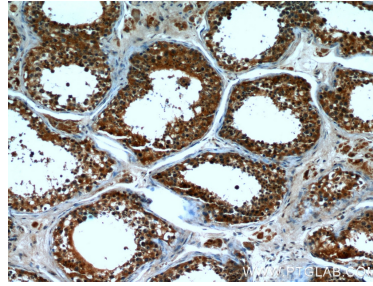
E: [proteintech@ptglab.com](mailto:proteintech@ptglab.com)  
W: [ptglab.com](http://ptglab.com)

This product is exclusively available under Proteintech Group brand and is not available to purchase from any other manufacturer.

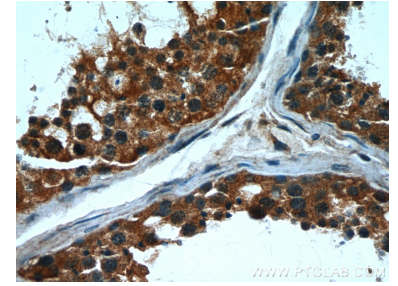
## Selected Validation Data



human brain tissue were subjected to SDS PAGE followed by western blot with 66072-1-Ig (CPT1C antibody) at dilution of 1:500 incubated at room temperature for 1.5 hours. This data was developed using the same antibody clone with 66072-1-PBS in a different storage buffer formulation.



Immunohistochemical analysis of paraffin-embedded human testis using 66072-1-Ig(CPT1C antibody) at dilution of 1:50 (under 10x lens). This data was developed using the same antibody clone with 66072-1-PBS in a different storage buffer formulation.



Immunohistochemical analysis of paraffin-embedded human testis using 66072-1-Ig(CPT1C antibody) at dilution of 1:50 (under 40x lens). This data was developed using the same antibody clone with 66072-1-PBS in a different storage buffer formulation.