

For Research Use Only

# EPLIN Monoclonal antibody, PBS Only



Catalog Number: 66071-1-PBS

Featured Product

## Basic Information

<b>Catalog Number:</b> 66071-1-PBS	<b>GenBank Accession Number:</b> BC001247	<b>Purification Method:</b> Protein A purification
<b>Size:</b> 100ug, Concentration: 1 mg/ml by Nanodrop;	<b>GeneID (NCBI):</b> 51474	<b>CloneNo.:</b> 6E6E6
<b>Source:</b> Mouse	<b>UNIPROT ID:</b> Q9UHB6	
<b>Isotype:</b> IgG1	<b>Full Name:</b> LIM domain and actin binding 1	
<b>Immunogen Catalog Number:</b> AG13288	<b>Calculated MW:</b> 85 kDa	
	<b>Observed MW:</b> 90 kDa, 110 kDa	

## Applications

**Tested Applications:**  
WB, IF, IHC, Indirect ELISA

**Species Specificity:**  
human, rat

## Background Information

EPLIN is a cytoskeletal protein that is preferentially expressed in epithelial cells and is implicated in regulation of cytoskeletal dynamics and cytokinesis. In human, there are two known isoforms, EPLIN-a and -b, generated by alternative promoter usage from a single gene. EPLIN-a expression is often down-regulated in cancerous cells and tissues. This antibody recognizes both of isoforms of EPLIN.

## Storage

**Storage:**  
Store at -80°C.

**Storage Buffer:**  
PBS Only

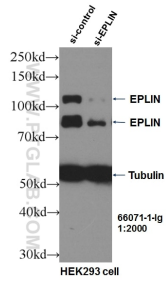
For technical support and original validation data for this product please contact:

T: 1 (888) 4PTGLAB (1-888-478-4522) (toll free in USA), or 1(312) 455-8498 (outside USA)

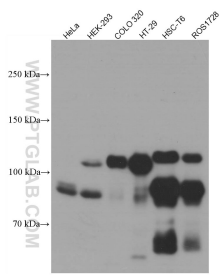
E: [proteintech@ptglab.com](mailto:proteintech@ptglab.com)  
W: [ptglab.com](http://ptglab.com)

This product is exclusively available under Proteintech Group brand and is not available to purchase from any other manufacturer.

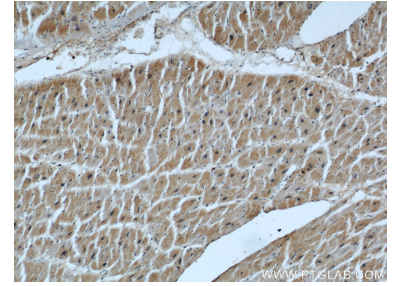
## Selected Validation Data



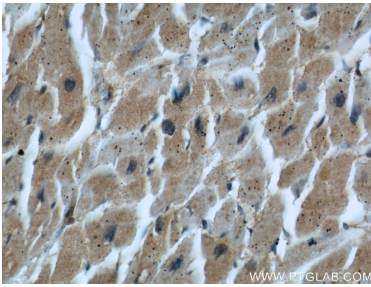
WB result of EPLIN antibody (66071-1-Ig, 1:2000) with si-Control and si-EPLIN transfected HEK293 cells. This data was developed using the same antibody clone with 66071-1-PBS in a different storage buffer formulation.



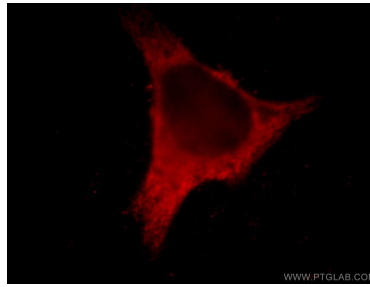
Various lysates were subjected to SDS PAGE followed by western blot with 66071-1-Ig (EPLIN antibody) at dilution of 1:5000 incubated at room temperature for 1.5 hours. This data was developed using the same antibody clone with 66071-1-PBS in a different storage buffer formulation.



Immunohistochemical analysis of paraffin-embedded human heart using 66071-1-Ig (EPLIN antibody) at dilution of 1:50 (under 10x lens). This data was developed using the same antibody clone with 66071-1-PBS in a different storage buffer formulation.



Immunohistochemical analysis of paraffin-embedded human heart using 66071-1-Ig (EPLIN antibody) at dilution of 1:50 (under 40x lens). This data was developed using the same antibody clone with 66071-1-PBS in a different storage buffer formulation.



Immunofluorescent analysis of HeLa cells using 66071-1-Ig (EPLIN antibody) at dilution of 1:50 and Rhodamine-Goat anti-Mouse IgG. This data was developed using the same antibody clone with 66071-1-PBS in a different storage buffer formulation.