

For Research Use Only

# CD31 Monoclonal antibody, PBS Only (Capture)



Catalog Number: 66065-3-PBS

## Basic Information

**Catalog Number:**

66065-3-PBS

**Size:**

100ug, Concentration: 1 mg/ml by Nanodrop;

**Source:**

Mouse

**Isotype:**

IgG1

**Immunogen Catalog Number:**

AG19730

**GenBank Accession Number:**

BC022512

**GeneID (NCBI):**

5175

**ENSEMBL Gene ID:**

ENSG00000261371

**UNIPROT ID:**

P16284

**Full Name:**

platelet/endothelial cell adhesion molecule

**Calculated MW:**

83 kDa

**Purification Method:**

Protein G Magarose purification

**CloneNo.:**

4B9C12

## Applications

**Tested Applications:**

Cytometric bead array, Indirect ELISA

**Species Specificity:**

human

## Product Information

66065-3-PBS targets CD31 as part of a matched antibody pair:

MP50319-1: 66065-3-PBS capture and 66065-4-PBS detection (validated in Cytometric bead array)

MP50319-3: 66065-3-PBS capture and 66065-6-PBS detection (validated in Cytometric bead array)

Unconjugated mouse monoclonal antibody pair in PBS only (BSA and azide free) storage buffer at a concentration of 1 mg/mL, ready for conjugation.

This conjugation ready format makes antibodies ideal for use in many applications including: ELISAs, multiplex assays requiring matched pairs, mass cytometry, and multiplex imaging applications. Antibody use should be optimized by the end user for each application and assay.

## Storage

**Storage:**

Store at -80°C.

**Storage Buffer:**

PBS Only

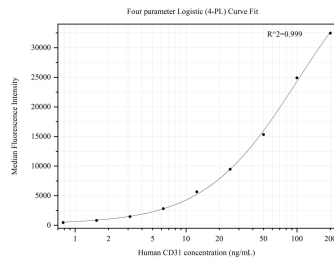
For technical support and original validation data for this product please contact:

T: 1 (888) 4PTGLAB (1-888-478-4522) (toll free in USA), or 1(312) 455-8498 (outside USA)

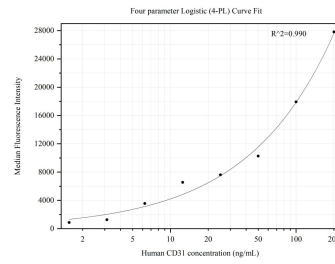
E: [proteintech@ptglab.com](mailto:proteintech@ptglab.com)  
W: [ptglab.com](http://ptglab.com)

This product is exclusively available under Proteintech Group brand and is not available to purchase from any other manufacturer.

## Selected Validation Data



Cytometric bead array standard curve of MP50319-1, CD31 Monoclonal Matched Antibody Pair, PBS Only. Capture antibody: 66065-3-PBS. Detection antibody: 66065-4-PBS. Standard:Ag1787. Range: 0.781-200 ng/mL.



Cytometric bead array standard curve of MP50319-3, CD31 Monoclonal Matched Antibody Pair, PBS Only. Capture antibody: 66065-3-PBS. Detection antibody: 66065-6-PBS. Standard:Ag1787. Range: 1.563-200 ng/mL.