

For Research Use Only

# 14-3-3 Monoclonal antibody, PBS Only



Catalog Number: 66061-1-PBS

## Basic Information

**Catalog Number:**

66061-1-PBS

**Size:**

100ug, Concentration: 1 mg/ml by Nanodrop;

**Source:**

Mouse

**Isotype:**

IgG1

**Immunogen Catalog Number:**

AG6055

**GenBank Accession Number:**

BC056867

**GeneID (NCBI):**

10971

**UNIPROT ID:**

P27348

**Full Name:**

tyrosine 3-monooxygenase/tryptophan 5-monooxygenase activation protein, theta polypeptide

**Calculated MW:**

28 kDa

**Observed MW:**

31 kDa, 28 kDa

**Purification Method:**

Protein G purification

**CloneNo.:**

2E10A3

## Applications

**Tested Applications:**

WB, IP, IF, IHC, Indirect ELISA

**Species Specificity:**

human, rat, mouse, pig

## Background Information

14-3-3 proteins interact with a wide spectrum of proteins and possess diverse functions. Mammals express seven distinct 14-3-3 isoforms (gamma, epsilon, beta, zeta, sigma, theta, tau) that form multiple homo- and heterodimers. 14-3-3 proteins display the highest expression levels in the brain, and have been implicated in several neurodegenerative diseases, including Alzheimer's disease and amyotrophic lateral sclerosis.

## Storage

**Storage:**

Store at -80°C.

**Storage Buffer:**

PBS Only

For technical support and original validation data for this product please contact:

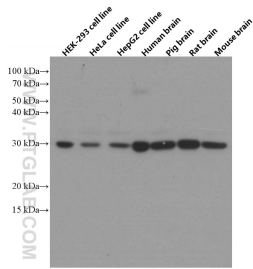
T: 1 (888) 4PTGLAB (1-888-478-4522) (toll free in USA), or 1(312) 455-8498 (outside USA)

E: [proteintech@ptglab.com](mailto:proteintech@ptglab.com)

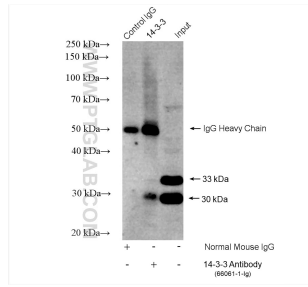
W: [ptglab.com](http://ptglab.com)

**This product is exclusively available under Proteintech Group brand and is not available to purchase from any other manufacturer.**

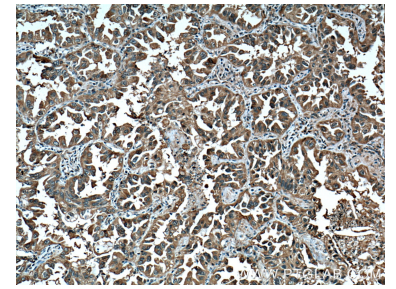
## Selected Validation Data



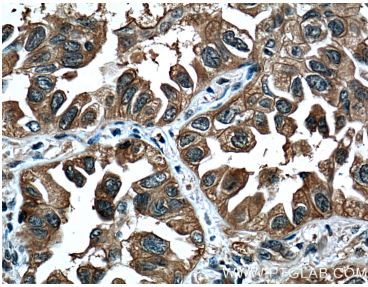
Various lysates were subjected to SDS PAGE followed by western blot with 66061-1-Ig (14-3-3 antibody) at dilution of 1:10000 incubated at room temperature for 1.5 hours. This data was developed using the same antibody clone with 66061-1-PBS in a different storage buffer formulation.



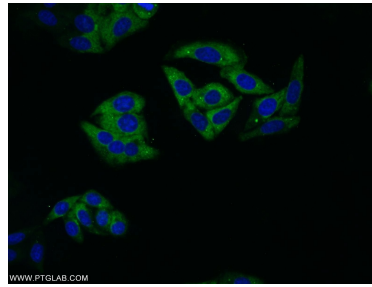
IP result of anti-14-3-3 (IP:66061-1-Ig, 4ug; Detection:66061-1-Ig 1:20000) with rat brain tissue lysate 1080 ug. This data was developed using the same antibody clone with 66061-1-PBS in a different storage buffer formulation.



Immunohistochemical analysis of paraffin-embedded human lung cancer tissue slide using 66061-1-Ig (14-3-3 Antibody) at dilution of 1:500 (under 10x lens). Heat mediated antigen retrieval with Tris-EDTA buffer (pH 9.0). This data was developed using the same antibody clone with 66061-1-PBS in a different storage buffer formulation.



Immunohistochemical analysis of paraffin-embedded human lung cancer tissue slide using 66061-1-Ig (14-3-3 Antibody) at dilution of 1:500 (under 40x lens). Heat mediated antigen retrieval with Tris-EDTA buffer (pH 9.0). This data was developed using the same antibody clone with 66061-1-PBS in a different storage buffer formulation.



Immunofluorescent analysis of HepG2 cells using 66061-1-Ig (14-3-3 antibody) at dilution of 1:50 and Alexa Fluor 488-conjugated AffiniPure Goat Anti-Mouse IgG (H+L). This data was developed using the same antibody clone with 66061-1-PBS in a different storage buffer formulation.