

For Research Use Only

RAB27A Monoclonal antibody, PBS Only



Catalog Number: 66058-1-PBS

Featured Product

Basic Information

Catalog Number:

66058-1-PBS

Size:

100ug, Concentration: 1 mg/ml by Nanodrop;

Source:

Mouse

Isotype:

IgG1

Immunogen Catalog Number:

AG12382

GenBank Accession Number:

BC107680

GeneID (NCBI):

5873

UNIPROT ID:

P51159

Full Name:

RAB27A, member RAS oncogene family

Calculated MW:

221 aa, 25 kDa

Observed MW:

27 kDa

Purification Method:

Protein A purification

CloneNo.:

1C4B8

Applications

Tested Applications:

WB, IHC, Indirect ELISA

Species Specificity:

human, mouse

Background Information

Rab27A is a member of a large family of Ras-related small GTPases. The protein is membrane-bound and may be involved in protein transport and small GTPase mediated signal transduction. Recent studies suggest that Rab27A is associated with melanosomes in pigmented cells and regulates melanosome transport via its interaction with actin-based cellular motors such as myosin Va and myosin VIIa. RAB27A is also required for regulated secretion in cytotoxic T lymphocytes. Rab27A is implicated in several diseases, including Griscelli syndrome, choroideremia, and the Hermansky-Pudlak syndrome mouse model, gunmetal.

Storage

Storage:

Store at -80°C.

Storage Buffer:

PBS Only

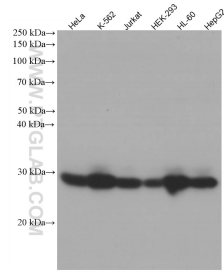
For technical support and original validation data for this product please contact:

T: 1 (888) 4PTGLAB (1-888-478-4522) (toll free in USA), or 1(312) 455-8498 (outside USA)

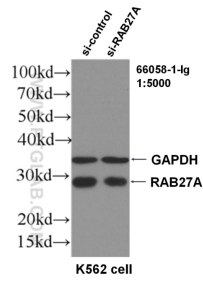
E: proteintech@ptglab.com
W: ptglab.com

This product is exclusively available under Proteintech Group brand and is not available to purchase from any other manufacturer.

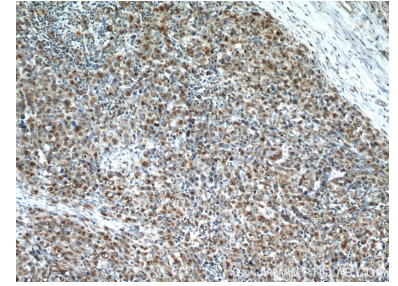
Selected Validation Data



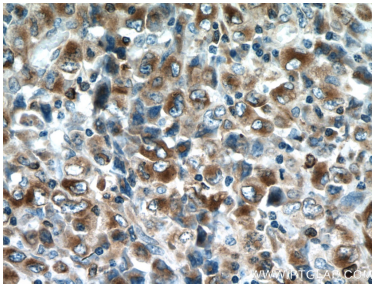
Various lysates were subjected to SDS PAGE followed by western blot with 66058-1-Ig (RAB27A antibody) at dilution of 1:20000 incubated at room temperature for 1.5 hours. This data was developed using the same antibody clone with 66058-1-PBS in a different storage buffer formulation.



WB result of RAB27A antibody (66058-1-Ig, 1:5000) with si-Control and si-RAB27A transfected K562 cells. This data was developed using the same antibody clone with 66058-1-PBS in a different storage buffer formulation.



Immunohistochemical analysis of paraffin-embedded human lymphoma tissue slide using 66058-1-Ig (RAB27A antibody) at dilution of 1:10000 (under 10x lens). Heat mediated antigen retrieval with Tris-EDTA buffer (pH 9.0). This data was developed using the same antibody clone with 66058-1-PBS in a different storage buffer formulation.



Immunohistochemical analysis of paraffin-embedded human lymphoma tissue slide using 66058-1-Ig (RAB27A antibody) at dilution of 1:10000 (under 40x lens). Heat mediated antigen retrieval with Tris-EDTA buffer (pH 9.0). This data was developed using the same antibody clone with 66058-1-PBS in a different storage buffer formulation.