

For Research Use Only

Cofilin Monoclonal antibody, PBS Only

Catalog Number: 66057-1-PBS

Featured Product



Basic Information

Catalog Number:

66057-1-PBS

Size:

100ug, Concentration: 1mg/ml by Nanodrop;

Source:

Mouse

Isotype:

IgG2a

Immunogen Catalog Number:

AG18044

GenBank Accession Number:

BC012318

GeneID (NCBI):

1072

UNIPROT ID:

P23528

Full Name:

cofilin 1 (non-muscle)

Calculated MW:

18 kDa

Observed MW:

18 kDa

Purification Method:

Protein A purification

CloneNo.:

1G6A2

Applications

Tested Applications:

WB, IHC, IF/ICC, Indirect ELISA

Species Specificity:

human, mouse, rat, pig, rabbit

Background Information

Cofilin is a ubiquitous actin-binding protein required for the reorganization of actin filaments. It is a member of ADF (actin-depolymerizing factor)/cofilin family that is a key regulator of actin dynamics and essential for cellular motility, cytokinesis, and endocytosis. Cofilin activity is tightly regulated by phosphorylation and dephosphorylation. Phosphorylation at Ser3 can inhibit its activity, also causing translocation from the nucleus to the cytoplasm.

Storage

Storage:

Store at -80°C.

Storage Buffer:

PBS Only

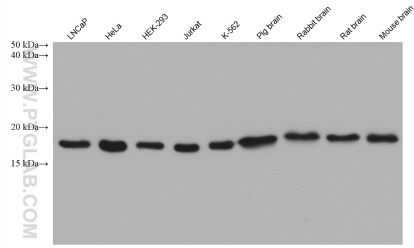
For technical support and original validation data for this product please contact:

T: 1 (888) 4PTGLAB (1-888-478-4522) (toll free in USA), or 1(312) 455-8498 (outside USA)

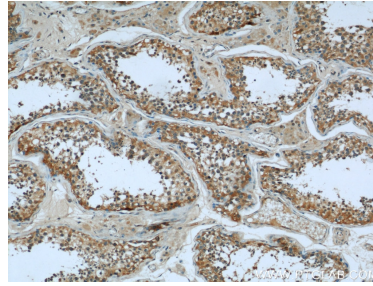
E: proteintech@ptglab.com
W: ptglab.com

This product is exclusively available under Proteintech Group brand and is not available to purchase from any other manufacturer.

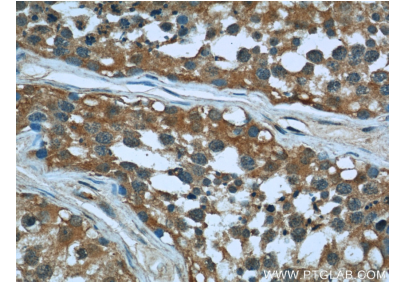
Selected Validation Data



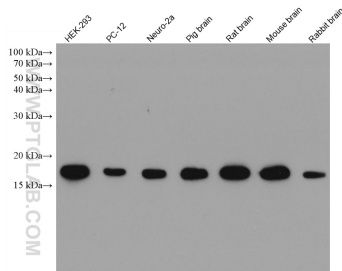
Various lysates were subjected to SDS PAGE followed by western blot with 66057-1-Ig (Cofilin antibody) at dilution of 1:20000 incubated at room temperature for 1.5 hours. This data was developed using the same antibody clone with 66057-1-PBS in a different storage buffer formulation.



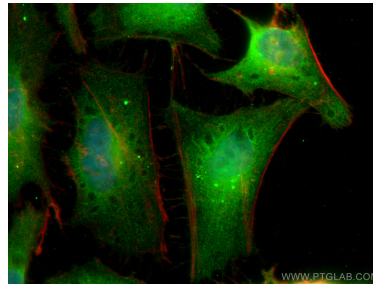
Immunohistochemical analysis of paraffin-embedded human testis using 66057-1-Ig(CFL1 antibody) at dilution of 1:50 (under 10x lens). This data was developed using the same antibody clone with 66057-1-PBS in a different storage buffer formulation.



Immunohistochemical analysis of paraffin-embedded human testis using 66057-1-Ig(CFL1 antibody) at dilution of 1:50 (under 40x lens). This data was developed using the same antibody clone with 66057-1-PBS in a different storage buffer formulation.



Various lysates were subjected to SDS PAGE followed by western blot with 66057-1-Ig (Cofilin antibody) at dilution of 1:20000 incubated at room temperature for 1.5 hours. This data was developed using the same antibody clone with 66057-1-PBS in a different storage buffer formulation.



Immunofluorescent analysis of (4% PFA) fixed HeLa cells using Cofilin antibody (66057-1-Ig, Clone: 1G6A2) at dilution of 1:800 and Coralite®488-Conjugated AffiniPure Goat Anti-Mouse IgG(H+L) (SA00013-1), CL594-phalloidin (red). This data was developed using the same antibody clone with 66057-1-PBS in a different storage buffer formulation.