

For Research Use Only

NDUFA4L2 Monoclonal antibody, PBS Only (Capture)

Catalog Number: 66050-1-PBS



Basic Information

Catalog Number: 66050-1-PBS	GenBank Accession Number: BC011910	Purification Method: Protein A purification
Size: 100ug, Concentration: 1mg/ml by Nanodrop;	GeneID (NCBI): 56901	CloneNo.: 1G1H10
Source: Mouse	UNIPROT ID: Q9NRX3	
Isotype: IgG2a	Full Name: NADH dehydrogenase (ubiquinone) 1 alpha subcomplex, 4-like 2	
Immunogen Catalog Number: AG9233	Calculated MW: 87 aa, 10 kDa	
	Observed MW: 10 kDa	

Applications

Tested Applications:
WB, IHC, IF/ICC, Cytometric bead array, Indirect ELISA

Species Specificity:
human

Product Information

66050-1-PBS targets NDUFA4L2 as part of a matched antibody pair:

MP50529-1: 66050-1-PBS capture and 66050-2-PBS detection (validated in Cytometric bead array)

Unconjugated mouse monoclonal antibody pair in PBS only (BSA and azide free) storage buffer at a concentration of 1 mg/mL, ready for conjugation.

This conjugation ready format makes antibodies ideal for use in many applications including: ELISAs, multiplex assays requiring matched pairs, mass cytometry, and multiplex imaging applications. Antibody use should be optimized by the end user for each application and assay.

Background Information

NDUFA4L2, also named as NUOMS, is a HIF-1 α target gene that localizes to the mitochondria. It downregulates oxygen consumption and Complex I activity in hypoxia. NDUFA4L2 is involved in hypoxic adaptation by decreasing mitochondrial ROS production.

Storage

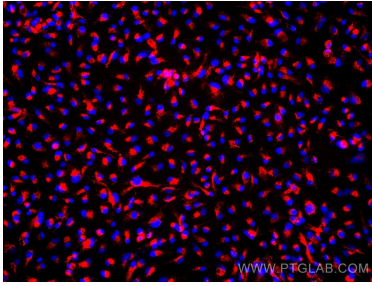
Storage:
Store at -80°C.

Storage Buffer:
PBS Only

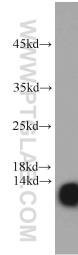
For technical support and original validation data for this product please contact:
T: 1 (888) 4PTGLAB (1-888-478-4522) (toll free in USA), or 1(312) 455-8498 (outside USA) E: proteintech@ptglab.com
W: ptglab.com

This product is exclusively available under Proteintech Group brand and is not available to purchase from any other manufacturer.

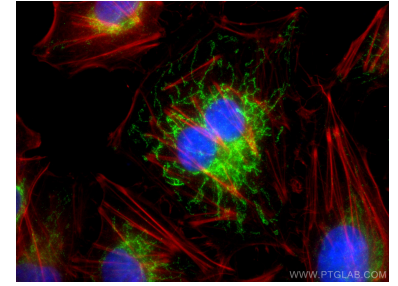
Selected Validation Data



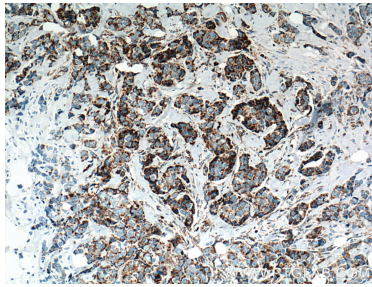
Immunofluorescent analysis of (4% PFA) fixed OS-RC-2 cells using NDUFA4L2 antibody (66050-1-Ig, Clone: 1G1H10) at dilution of 1:1200 and Multi-rAb CoraLite® Plus 594-Goat Anti-Mouse Recombinant Secondary Antibody (H+L) (Cat.NO. RGAM004). This data was developed using the same antibody clone with 66050-1-PBS in a different storage buffer formulation.



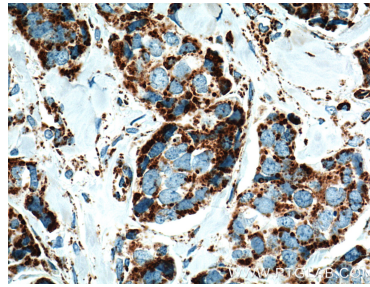
HeLa cells were subjected to SDS PAGE followed by western blot with 66050-1-Ig (NDUFA4L2 antibody) at dilution of 1:1000 incubated at room temperature for 1.5 hours. This data was developed using the same antibody clone with 66050-1-PBS in a different storage buffer formulation.



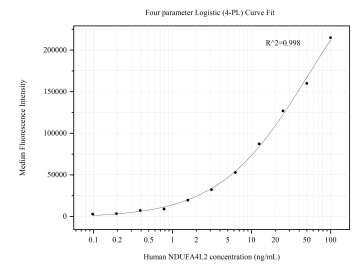
Immunofluorescent analysis of (4% PFA) fixed HUVEC cells using NDUFA4L2 antibody (66050-1-Ig, Clone: 1G1H10) at dilution of 1:400 and CoraLite® 488-Conjugated AffiniPure Goat Anti-Mouse IgG (H+L). This data was developed using the same antibody clone with 66050-1-PBS in a different storage buffer formulation.



Immunohistochemical analysis of paraffin-embedded human breast cancer tissue slide using 66050-1-Ig (NDUFA4L2 Antibody) at dilution of 1:500 (under 10x lens). Heat mediated antigen retrieval with Tris-EDTA buffer (pH 9.0). This data was developed using the same antibody clone with 66050-1-PBS in a different storage buffer formulation.



Immunohistochemical analysis of paraffin-embedded human breast cancer tissue slide using 66050-1-Ig (NDUFA4L2 Antibody) at dilution of 1:500 (under 40x lens). Heat mediated antigen retrieval with Tris-EDTA buffer (pH 9.0). This data was developed using the same antibody clone with 66050-1-PBS in a different storage buffer formulation.



Cytometric bead array standard curve of MP50529-1, NDUFA4L2 Monoclonal Matched Antibody Pair, PBS Only. Capture antibody: 66050-1-PBS. Detection antibody: 66050-2-PBS. Standard: Ag9233. Range: 0.098-100 ng/mL.