

For Research Use Only

# Cyclophilin B Monoclonal antibody

Catalog Number: 66047-1-Ig **Featured Product**



## Basic Information

<b>Catalog Number:</b> 66047-1-Ig	<b>GenBank Accession Number:</b> BC032138	<b>Purification Method:</b> Protein A purification
<b>Size:</b> 150ul, Concentration: 1400 µg/ml by Nanodrop and 1000 µg/ml by Bradford method using BSA as the standard;	<b>GeneID (NCBI):</b> 5479	<b>CloneNo.:</b> 8H4F1
<b>Source:</b> Mouse	<b>UNIPROT ID:</b> P23284	<b>Recommended Dilutions:</b> WB 1:1000-1:8000 IHC 1:250-1:1000 IF/ICC 1:400-1:1600
<b>Isotype:</b> IgG2a	<b>Full Name:</b> peptidylprolyl isomerase B (cyclophilin B)	
<b>Immunogen Catalog Number:</b> AG17957	<b>Calculated MW:</b> 216 aa, 24 kDa	
	<b>Observed MW:</b> 19-24 kDa	

## Applications

<b>Tested Applications:</b> WB, IHC, IF/ICC, FC (Intra), ELISA	<b>Positive Controls:</b> WB : HeLa cells, MCF-7 cells, HEK-293 cells, Jurkat cells, RAW 264.7 cells, ROS1728 cells, PC-12 cells, C6 cells
<b>Species Specificity:</b> human, mouse	<b>IHC :</b> human pancreas cancer tissue,
<b>Note-IHC: suggested antigen retrieval with TE buffer pH 9.0; (*) Alternatively, antigen retrieval may be performed with citrate buffer pH 6.0</b>	<b>IF/ICC :</b> HeLa cells,

## Background Information

PPIB, also named as CYPB, SCYLP, PPIase B and CYP-S1, belongs to the cyclophilin-type PPIase family and PPIase B subfamily. PPIases accelerate the folding of proteins. It catalyzes the cis-trans isomerization of proline imidic peptide bonds in oligopeptides. PPIB is secreted in biological fluids such as blood or milk and binds to a specific receptor present on the human lymphoblastic cell line Jurkat and on human peripheral blood lymphocytes. The full-length of PPIB has 216aa (24 kDa), and a 33aa-signal peptide could be removed in the mature form (about 19 kDa).

## Storage

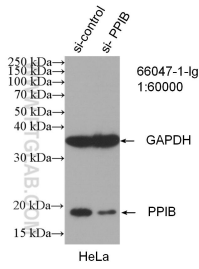
**Storage:**  
Store at -20°C. Stable for one year after shipment.  
**Storage Buffer:**  
PBS with 0.02% sodium azide and 50% glycerol pH 7.3.  
**Aliquoting is unnecessary for -20°C storage**

**\*\*\* 20ul sizes contain 0.1% BSA**

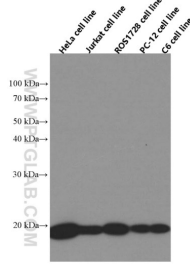
For technical support and original validation data for this product please contact:  
T: 1 (888) 4PTGLAB (1-888-478-4522) (toll free in USA), or 1(312) 455-8498 (outside USA)  
E: proteintech@ptglab.com  
W: ptglab.com

**This product is exclusively available under Proteintech Group brand and is not available to purchase from any other manufacturer.**

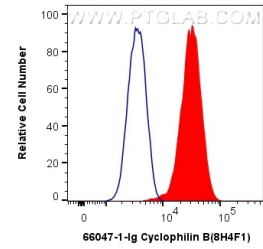
## Selected Validation Data



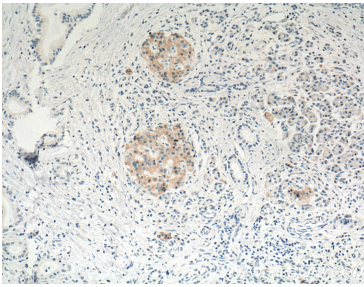
WB result of Cyclophilin B antibody (66047-1-Ig; 1:60000; incubated at room temperature for 1.5 hours) with sh-Control and sh-Cyclophilin B transfected HeLa cells.



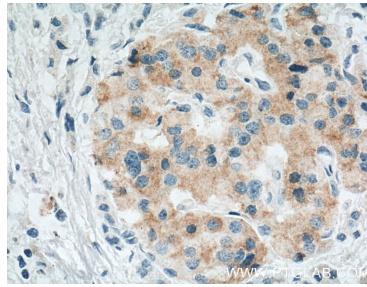
HeLa/Jurkat/ROS1728/PC-12/C6 cells were subjected to SDS PAGE followed by western blot with 66047-1-Ig (Cyclophilin B antibody at dilution of 1:4000 incubated at room temperature for 1.5 hours.



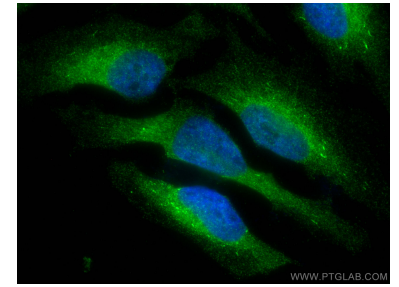
1X10<sup>6</sup> HeLa cells were intracellularly stained with 0.4 ug Anti-Human Cyclophilin B (66047-1-Ig, Clone: 8H4F1) and CoraLite® 488-Conjugated AffiniPure Goat Anti-Mouse IgG(H+L) at dilution 1:1000 (red), or 0.4 ug Mouse IgG2a Isotype Control (C1.18.4) (65208-1-Ig, Clone: C1.18.4) (blue). Cells were fixed with 4% PFA and permeabilized with Flow Cytometry Perm Buffer (PF00011-C).



Immunohistochemical analysis of paraffin-embedded human pancreas cancer tissue slide using 66047-1-Ig (Cyclophilin B antibody at dilution of 1:200 (under 10x lens). Heat mediated antigen retrieval with Tris-EDTA buffer (pH 9.0).



Immunohistochemical analysis of paraffin-embedded human pancreas cancer tissue slide using 66047-1-Ig (Cyclophilin B antibody at dilution of 1:200 (under 40x lens). Heat mediated antigen retrieval with Tris-EDTA buffer (pH 9.0).



Immunofluorescent analysis of (4% PFA) fixed HeLa cells using Cyclophilin B antibody (66047-1-Ig, Clone: 8H4F1) at dilution of 1:800 and CoraLite® 488-Conjugated AffiniPure Goat Anti-Mouse IgG(H+L).