

For Research Use Only

# LPCAT1 Monoclonal antibody, PBS Only (Detector)

Catalog Number: 66044-3-PBS



## Basic Information

Catalog Number:

66044-3-PBS

Size:

100ug, Concentration: 1 mg/ml by  
Nanodrop;

Source:

Mouse

Isotype:

IgG2b

Immunogen Catalog Number:

AG9060

GenBank Accession Number:

BC020166

GeneID (NCBI):

79888

UNIPROT ID:

Q8NF37

Full Name:

lysophosphatidylcholine  
acyltransferase 1

Calculated MW:

534 aa, 59 kDa

Purification Method:

Protein A Magarose purification

CloneNo.:

4G2D5

## Applications

Tested Applications:

Cytometric bead array, Indirect ELISA

Species Specificity:

human

## Product Information

66044-3-PBS targets LPCAT1 as part of a matched antibody pair:

MP50776-1: 66044-2-PBS capture and 66044-3-PBS detection (validated in Cytometric bead array)

MP50776-2: 66044-1-PBS capture and 66044-3-PBS detection (validated in Cytometric bead array)

Unconjugated mouse monoclonal antibody pair in PBS only (BSA and azide free) storage buffer at a concentration of 1 mg/mL, ready for conjugation.

This conjugation ready format makes antibodies ideal for use in many applications including: ELISAs, multiplex assays requiring matched pairs, mass cytometry, and multiplex imaging applications. Antibody use should be optimized by the end user for each application and assay.

## Storage

Storage:

Store at -80°C.

Storage Buffer:

PBS Only

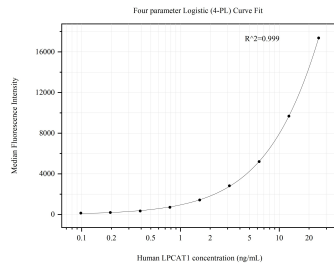
For technical support and original validation data for this product please contact:

T: 1 (888) 4PTGLAB (1-888-478-4522) (toll free  
in USA), or 1(312) 455-8498 (outside USA)

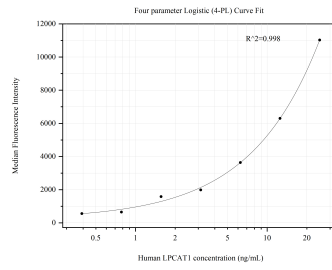
E: [proteintech@ptglab.com](mailto:proteintech@ptglab.com)  
W: [ptglab.com](http://ptglab.com)

**This product is exclusively available under Proteintech Group brand and is not available to purchase from any other manufacturer.**

## Selected Validation Data



Cytometric bead array standard curve of MP50776-1, LPCAT1 Monoclonal Matched Antibody Pair, PBS Only. Capture antibody: 66044-2-PBS. Detection antibody: 66044-3-PBS. Standard: Ag9060. Range: 0.098-25 ng/mL



Cytometric bead array standard curve of MP50776-2, LPCAT1 Monoclonal Matched Antibody Pair, PBS Only. Capture antibody: 66044-1-PBS. Detection antibody: 66044-3-PBS. Standard: Ag9060. Range: 0.391-25 ng/mL