

For Research Use Only

LPCAT1 Monoclonal antibody, PBS Only (Capture/Detector)

Catalog Number: 66044-2-PBS



Basic Information

Catalog Number: 66044-2-PBS	GenBank Accession Number: BC020166	Purification Method: Protein G Magarose purification
Size: 100ug , Concentration: 1 mg/ml by Nanodrop;	GeneID (NCBI): 79888	CloneNo.: 2C11D12
Source: Mouse	UNIPROT ID: Q8NF37	
Isotype: IgG1	Full Name: lysophosphatidylcholine acyltransferase 1	
Immunogen Catalog Number: AG9060	Calculated MW: 534 aa, 59 kDa	

Applications

Tested Applications:
Cytometric bead array, Indirect ELISA

Species Specificity:
human

Product Information

66044-2-PBS targets LPCAT1 as part of a matched antibody pair:

MP50776-1: 66044-2-PBS capture and 66044-3-PBS detection (validated in Cytometric bead array)

MP50776-3: 66044-1-PBS capture and 66044-2-PBS detection (validated in Cytometric bead array)

MP50776-4: 66044-4-PBS capture and 66044-2-PBS detection (validated in Cytometric bead array)

Unconjugated mouse monoclonal antibody pair in PBS only (BSA and azide free) storage buffer at a concentration of 1 mg/mL, ready for conjugation.

This conjugation ready format makes antibodies ideal for use in many applications including: ELISAs, multiplex assays requiring matched pairs, mass cytometry, and multiplex imaging applications. Antibody use should be optimized by the end user for each application and assay.

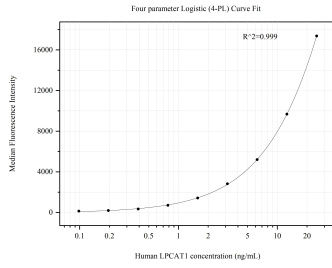
Storage

Storage:
Store at -80°C.
Storage Buffer:
PBS Only

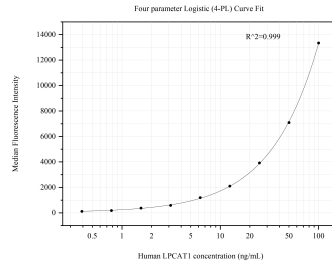
For technical support and original validation data for this product please contact:
T: 1 (888) 4PTGLAB (1-888-478-4522) (toll free in USA), or 1(312) 455-8498 (outside USA) E: proteintech@ptglab.com
W: ptglab.com

This product is exclusively available under Proteintech Group brand and is not available to purchase from any other manufacturer.

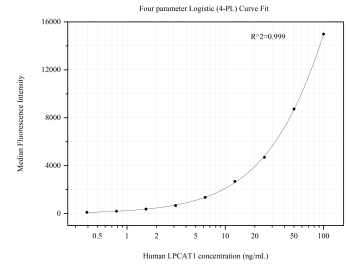
Selected Validation Data



Cytometric bead array standard curve of MP50776-1, LPCAT1 Monoclonal Matched Antibody Pair, PBS Only. Capture antibody: 66044-2-PBS. Detection antibody: 66044-3-PBS. Standard: Ag9060. Range: 0.098-25 ng/mL



Cytometric bead array standard curve of MP50776-3, LPCAT1 Monoclonal Matched Antibody Pair, PBS Only. Capture antibody: 66044-1-PBS. Detection antibody: 66044-2-PBS. Standard: Ag9060. Range: 0.391-100 ng/mL



Cytometric bead array standard curve of MP50776-4, LPCAT1 Monoclonal Matched Antibody Pair, PBS Only. Capture antibody: 66044-4-PBS. Detection antibody: 66044-2-PBS. Standard: Ag9060. Range: 0.391-100 ng/mL