

For Research Use Only

# LPCAT1 Monoclonal antibody, PBS Only (Capture)

Catalog Number: 66044-1-PBS

Featured Product



## Basic Information

<b>Catalog Number:</b> 66044-1-PBS	<b>GenBank Accession Number:</b> BC020166	<b>Purification Method:</b> Protein A purification
<b>Size:</b> 100ug, Concentration: 1mg/ml by Nanodrop;	<b>GeneID (NCBI):</b> 79888	<b>CloneNo.:</b> 8B6E9
<b>Source:</b> Mouse	<b>UNIPROT ID:</b> Q8NF37	
<b>Isotype:</b> IgG2b	<b>Full Name:</b> lysophosphatidylcholine acyltransferase 1	
<b>Immunogen Catalog Number:</b> AG9060	<b>Calculated MW:</b> 534 aa, 59 kDa	
	<b>Observed MW:</b> 55 kDa	

## Applications

**Tested Applications:**  
WB, IHC, IF/ICC, IF-P, Cytometric bead array, Indirect ELISA

**Species Specificity:**  
human, mouse, rat

## Product Information

66044-1-PBS targets LPCAT1 as part of a matched antibody pair.

MP50776-2: 66044-1-PBS capture and 66044-3-PBS detection (validated in Cytometric bead array)

Unconjugated mouse monoclonal antibody pair in PBS only (BSA and azide free) storage buffer at a concentration of 1 mg/mL, ready for conjugation.

This conjugation ready format makes antibodies ideal for use in many applications including: ELISAs, multiplex assays requiring matched pairs, mass cytometry, and multiplex imaging applications. Antibody use should be optimized by the end user for each application and assay.

## Background Information

LPCAT1, also named as AYTL2, PFAAP3 and LysoPAFAT, belongs to the 1-acyl-sn-glycerol-3-phosphate acyltransferase family. It is a key enzyme for remodeling phospholipids, including phosphatidylcholine. The expression level of LPCAT1 is able to differentiate prostate cancer from noncancerous prostatic changes, and correlates to the tumor grade of prostate cancer. LPCAT1 possesses both acyltransferase and acetyltransferase activities. It mediates the conversion of 1-acyl-sn-glycero-3-phosphocholine (LPC) into phosphatidylcholine (PC).

## Storage

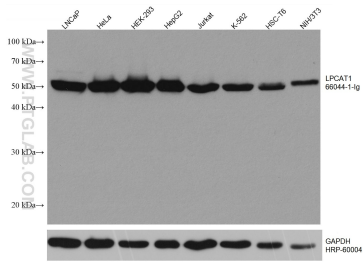
**Storage:**  
Store at -80°C.

**Storage Buffer:**  
PBS Only

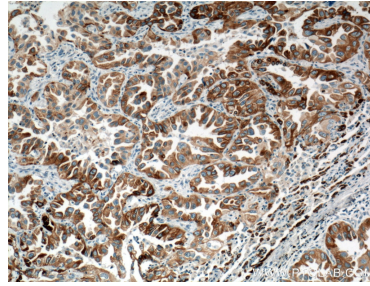
For technical support and original validation data for this product please contact:  
T: 1 (888) 4PTGLAB (1-888-478-4522) (toll free in USA), or 1(312) 455-8498 (outside USA)  
E: proteintech@ptglab.com  
W: ptglab.com

This product is exclusively available under Proteintech Group brand and is not available to purchase from any other manufacturer.

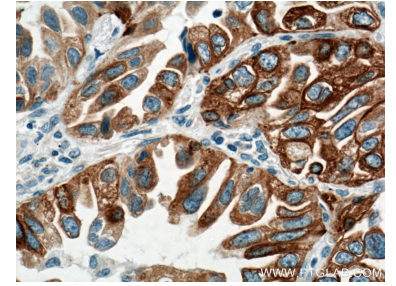
## Selected Validation Data



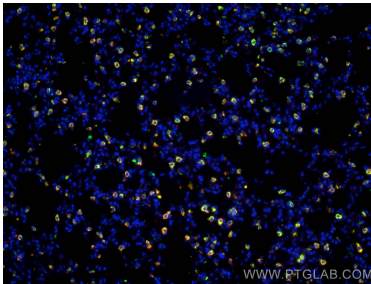
Various lysates were subjected to SDS PAGE followed by western blot with 66044-1-Ig (LPCAT1 antibody) at dilution of 1:10000 incubated at room temperature for 1.5 hours. The membrane was stripped and reblotted with HRP-conjugated GAPDH Monoclonal antibody (HRP-60004) as loading control. This data was developed using the same antibody clone with 66044-1-PBS in a different storage buffer formulation.



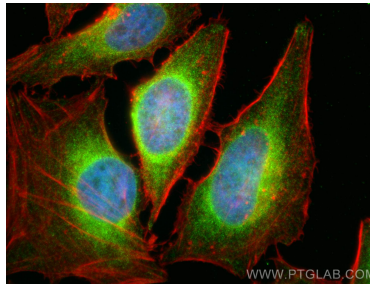
Immunohistochemical analysis of paraffin-embedded human lung cancer tissue slide using 66044-1-Ig (LPCAT1 Antibody) at dilution of 1:200 (under 10x lens). Heat mediated antigen retrieval with Tris-EDTA buffer (pH 9.0). This data was developed using the same antibody clone with 66044-1-PBS in a different storage buffer formulation.



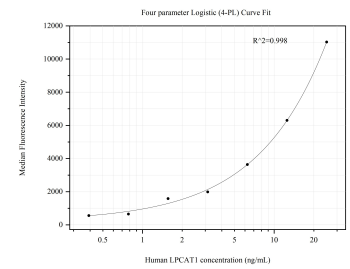
Immunohistochemical analysis of paraffin-embedded human lung cancer tissue slide using 66044-1-Ig (LPCAT1 Antibody) at dilution of 1:200 (under 40x lens). Heat mediated antigen retrieval with Tris-EDTA buffer (pH 9.0). This data was developed using the same antibody clone with 66044-1-PBS in a different storage buffer formulation.



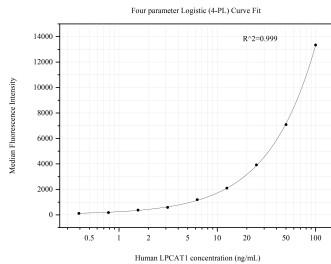
Immunofluorescent analysis of (4% PFA) fixed mouse lung tissue using LPCAT1 antibody (66044-1-Ig, Clone: 8B6E9) at dilution of 1:400 and CoraLite@594-Conjugated AffiniPure Goat Anti-Mouse IgG(H+L), SFTPC antibody (10774-1-AP, green). This data was developed using the same antibody clone with 66044-1-PBS in a different storage buffer formulation.



Immunofluorescent analysis of (4% PFA) fixed HeLa cells using LPCAT1 antibody (66044-1-Ig, Clone: 8B6E9) at dilution of 1:800 and CoraLite@488-Conjugated AffiniPure Goat Anti-Mouse IgG(H+L), CL594-Phalloidin (red). This data was developed using the same antibody clone with 66044-1-PBS in a different storage buffer formulation.



Cytometric bead array standard curve of MP50776-2, LPCAT1 Monoclonal Matched Antibody Pair, PBS Only. Capture antibody: 66044-1-PBS. Detection antibody: 66044-3-PBS. Standard: Ag9060. Range: 0.391-25 ng/mL.



Cytometric bead array standard curve of MP50776-3, LPCAT1 Monoclonal Matched Antibody Pair, PBS Only. Capture antibody: 66044-1-PBS. Detection antibody: 66044-2-PBS. Standard: null. Range: null.