

For Research Use Only

# Fibronectin Monoclonal antibody, PBS Only

Catalog Number: 66042-1-PBS

Featured Product



## Basic Information

Catalog Number:

66042-1-PBS

Size:

100ug, Concentration: 1mg/ml by Nanodrop;

Source:

Mouse

Isotype:

IgG1

Immunogen Catalog Number:

AG8016

GenBank Accession Number:

BC005858

GeneID (NCBI):

2335

UNIPROT ID:

P02751

Full Name:

fibronectin 1

Calculated MW:

2386 aa, 263 kDa

Observed MW:

263 kDa

Purification Method:

Protein A purification

CloneNo.:

1G10F9

## Applications

Tested Applications:

WB, IHC, IF/ICC, IF-P, IP, ELISA

Species Specificity:

human, mouse, rat

## Background Information

Fibronectin 1 (FN1) is a high molecular weight glycoprotein which exists in both a soluble form in plasma (plasma FN1) and other body fluids and an insoluble form in the extracellular matrix (cellular FN1). Plasma FN1 (dimeric form) is secreted by hepatocytes. Cellular FN (dimeric or cross-linked multimeric forms), made by fibroblasts, epithelial and other cell types, is deposited as fibrils in the extracellular matrix. FN1 binds to cell surfaces through integrins and to various compounds including collagen, fibrin and heparin. It is involved in cell adhesion and migration processes including embryogenesis, wound healing, hemostasis, host defense, and metastasis. (PMID: 7276612; 12244123; 12847088)

## Storage

Storage:

Store at -80°C.

Storage Buffer:

PBS Only

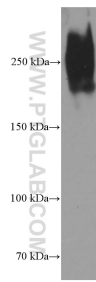
For technical support and original validation data for this product please contact:

T: 1 (888) 4PTGLAB (1-888-478-4522) (toll free in USA), or 1(312) 455-8498 (outside USA)

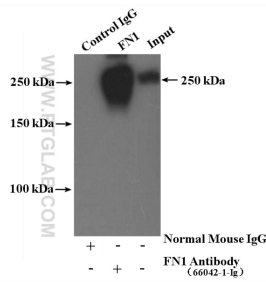
E: [proteintech@ptglab.com](mailto:proteintech@ptglab.com)  
W: [ptglab.com](http://ptglab.com)

This product is exclusively available under Proteintech Group brand and is not available to purchase from any other manufacturer.

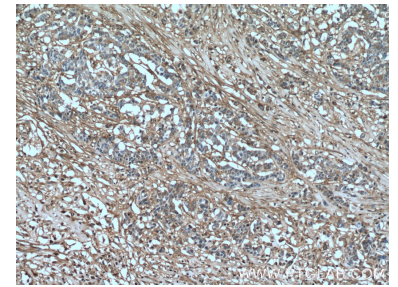
## Selected Validation Data



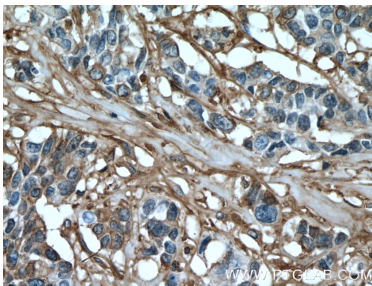
human plasma were subjected to SDS PAGE followed by western blot with 66042-1-Ig (Fibronectin antibody at dilution of 1:6000 incubated at room temperature for 1.5 hours. This data was developed using the same antibody clone with 66042-1-PBS in a different storage buffer formulation.



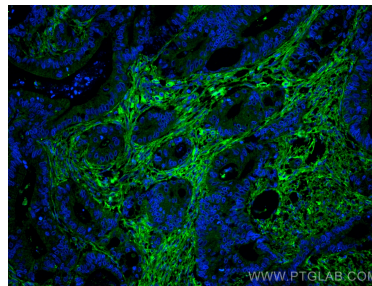
IP result of anti-Fibronectin (IP:66042-1-Ig, 5ug; Detection:66042-1-Ig 1:500) with human plasma lysate 4000ug. This data was developed using the same antibody clone with 66042-1-PBS in a different storage buffer formulation.



Immunohistochemical analysis of paraffin-embedded human colon cancer tissue slide using 66042-1-Ig (Fibronectin antibody) at dilution of 1:600 (under 10x lens). Heat mediated antigen retrieval with Tris-EDTA buffer (pH 9.0). This data was developed using the same antibody clone with 66042-1-PBS in a different storage buffer formulation.



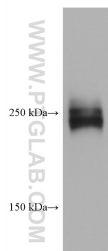
Immunohistochemical analysis of paraffin-embedded human colon cancer tissue slide using 66042-1-Ig (Fibronectin antibody) at dilution of 1:600 (under 40x lens). Heat mediated antigen retrieval with Tris-EDTA buffer (pH 9.0). This data was developed using the same antibody clone with 66042-1-PBS in a different storage buffer formulation.



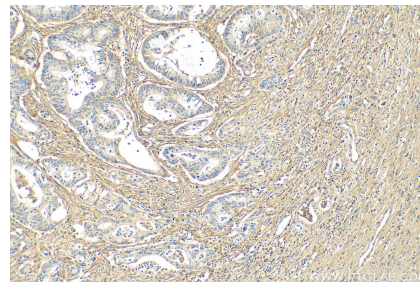
Immunofluorescent analysis of (4% PFA) fixed human colon cancer tissue using Fibronectin antibody (66042-1-Ig, Clone: 1G10F9) at dilution of 1:400 and CoraLite@488-Conjugated AffiniPure Goat Anti-Mouse IgG(H+L). This data was developed using the same antibody clone with 66042-1-PBS in a different storage buffer formulation.



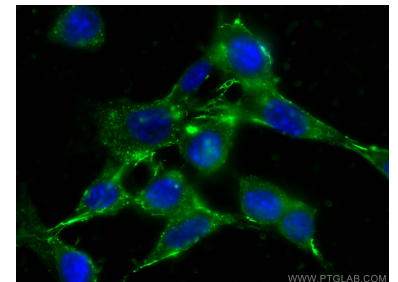
Various lysates were subjected to SDS PAGE followed by western blot with 66042-1-Ig (Fibronectin antibody) at dilution of 1:10000 incubated at room temperature for 1.5 hours. This data was developed using the same antibody clone with 66042-1-PBS in a different storage buffer formulation.



HuH-7 cells were subjected to SDS PAGE followed by western blot with 66042-1-Ig (Fibronectin antibody) at dilution of 1:10000 incubated at room temperature for 1.5 hours. This data was developed using the same antibody clone with 66042-1-PBS in a different storage buffer formulation.



Immunohistochemical analysis of paraffin-embedded human colon cancer tissue slide using 66042-1-Ig (Fibronectin antibody) at dilution of 1:800 (under 10x lens). Heat mediated antigen retrieval with Tris-EDTA buffer (pH 9.0). This data was developed using the same antibody clone with 66042-1-PBS in a different storage buffer formulation.



Immunofluorescent analysis of (-20°C Ethanol) fixed NIH/3T3 cells using Fibronectin antibody (66042-1-Ig, Clone: 1G10F9) at dilution of 1:400 and CoraLite@488-Conjugated AffiniPure Goat Anti-Mouse IgG(H+L). This data was developed using the same antibody clone with 66042-1-PBS in a different storage buffer formulation.