

For Research Use Only

# IVD Monoclonal antibody, PBS Only

Catalog Number: 66032-1-PBS



## Basic Information

|   |   |   |
|---|---|---|
| <b>Catalog Number:</b><br>66032-1-PBS                         | <b>GenBank Accession Number:</b><br>BC017202                | <b>Purification Method:</b><br>Protein A purification |
| <b>Size:</b><br>100ug , Concentration: 1mg/ml by<br>Nanodrop; | <b>GeneID (NCBI):</b><br>3712                               | <b>CloneNo.:</b><br>2D12A5                            |
| <b>Source:</b><br>Mouse                                       | <b>UNIPROT ID:</b><br>P26440                                |   |
| <b>Isotype:</b><br>IgG2a                                      | <b>Full Name:</b><br>isovaleryl Coenzyme A<br>dehydrogenase |   |
| <b>Immunogen Catalog Number:</b><br>AG18042                   | <b>Calculated MW:</b><br>46 kDa                             |   |
|   | <b>Observed MW:</b><br>41-46 kDa                            |   |

## Applications

**Tested Applications:**  
WB, IHC, IF/ICC, IF-P, Indirect ELISA

**Species Specificity:**  
human

## Background Information

IVD(Isovaleryl CoA dehydrogenase, mitochondrial) is a member of the acylCoA dehydrogenase family and is involved in the catabolism of leucine. In size, IVD precursor and mature proteins produced by class I mutants are indistinguishable from their normal counterparts. Class II, III, and IV mutants make IVD precursor proteins 42 kD in size rather than the normal 45 kD(PMID:2063866). It has 2 isoforms produced by alternative splicing.

## Storage

**Storage:**  
Store at -80°C.

**Storage Buffer:**  
PBS Only

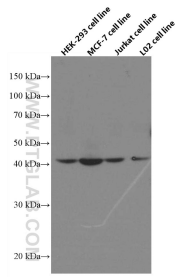
For technical support and original validation data for this product please contact:

T: 1 (888) 4PTGLAB (1-888-478-4522) (toll free  
in USA), or 1(312) 455-8498 (outside USA)

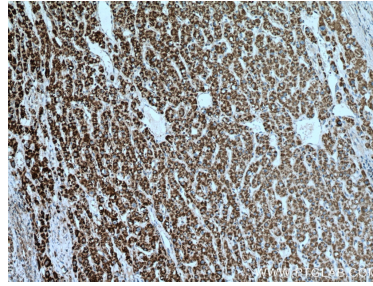
E: [proteintech@ptglab.com](mailto:proteintech@ptglab.com)  
W: [ptglab.com](http://ptglab.com)

**This product is exclusively available under Proteintech Group brand and is not available to purchase from any other manufacturer.**

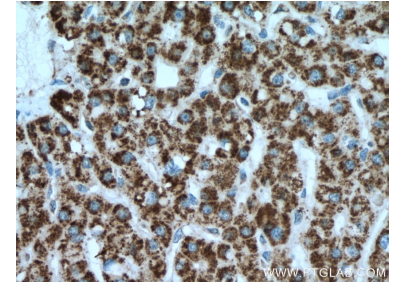
## Selected Validation Data



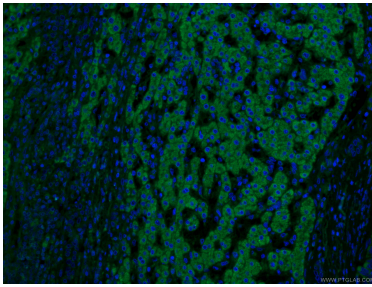
Various lysates were subjected to SDS PAGE followed by western blot with 66032-1-Ig (IVD antibody) at dilution of 1:3000 incubated at room temperature for 1.5 hours. This data was developed using the same antibody clone with 66032-1-PBS in a different storage buffer formulation.



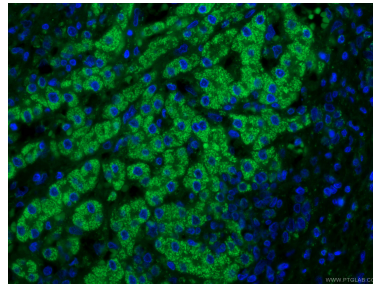
Immunohistochemical analysis of paraffin-embedded human liver cancer tissue slide using 66032-1-Ig (IVD antibody) at dilution of 1:1000 (under 10x lens). Heat mediated antigen retrieval with Tris-EDTA buffer (pH 9.0). This data was developed using the same antibody clone with 66032-1-PBS in a different storage buffer formulation.



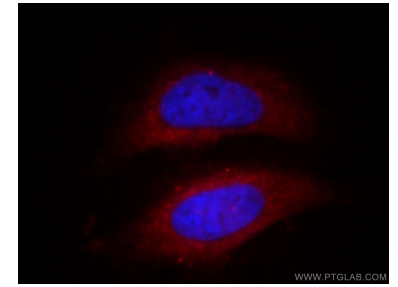
Immunohistochemical analysis of paraffin-embedded human liver cancer tissue slide using 66032-1-Ig (IVD antibody) at dilution of 1:1000 (under 40x lens). Heat mediated antigen retrieval with Tris-EDTA buffer (pH 9.0). This data was developed using the same antibody clone with 66032-1-PBS in a different storage buffer formulation.



Immunofluorescent analysis of (4% PFA) fixed human liver cancer tissue using 66032-1-Ig (IVD antibody) at dilution of 1:100 and CoraLite488-Conjugated AffiniPure Goat Anti-Mouse IgG(H+L). This data was developed using the same antibody clone with 66032-1-PBS in a different storage buffer formulation.



Immunofluorescent analysis of (4% PFA) fixed human liver cancer tissue using 66032-1-Ig (IVD antibody) at dilution of 1:100 and CoraLite488-Conjugated AffiniPure Goat Anti-Mouse IgG(H+L). This data was developed using the same antibody clone with 66032-1-PBS in a different storage buffer formulation.



Immunofluorescent analysis of MCF-7 cells, using IVD antibody 66032-1-Ig at 1:25 dilution and Rhodamine-labeled goat anti-mouse IgG (red). Blue pseudocolor = DAPI (fluorescent DNA dye). This data was developed using the same antibody clone with 66032-1-PBS in a different storage buffer formulation.