

For Research Use Only

# EIF3D Monoclonal antibody, PBS Only

Catalog Number: 66024-1-PBS

Featured Product



## Basic Information

**Catalog Number:**

66024-1-PBS

**Size:**

100ug, Concentration: 1mg/ml by Nanodrop;

**Source:**

Mouse

**Isotype:**

IgG2b

**Immunogen Catalog Number:**

AG18092

**GenBank Accession Number:**

BC000328

**GeneID (NCBI):**

8664

**UNIPROT ID:**

O15371

**Full Name:**

eukaryotic translation initiation factor 3, subunit D

**Calculated MW:**

66 kDa

**Observed MW:**

66 kDa

**Purification Method:**

Protein A purification

**CloneNo.:**

2C5A3

## Applications

**Tested Applications:**

WB, IHC, IF/ICC, Indirect ELISA

**Species Specificity:**

human, mouse, rat

## Background Information

The mammalian translation initiation factor 3 (eIF3), is a multiprotein complex of ~600 kDa that binds to the 40 S ribosome and promotes the binding of methionyl-tRNAi and mRNA. The EIF3S7(p66) is the major RNA binding subunit in this complex. Human eIF3-p66 shares 64% sequence identity with a hypothetical Caenorhabditis elegans protein, presumably the p66 homolog. Deletion analyses of recombinant derivatives of eIF3-p66 show that the RNA-binding domain lies within an N-terminal 71-amino acid region rich in lysine and arginine.

## Storage

**Storage:**

Store at -80°C.

**Storage Buffer:**

PBS Only

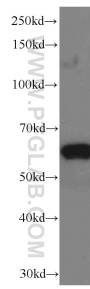
For technical support and original validation data for this product please contact:

T: 1 (888) 4PTGLAB (1-888-478-4522) (toll free in USA), or 1(312) 455-8498 (outside USA)

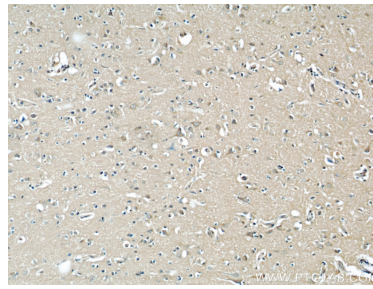
E: [proteintech@ptglab.com](mailto:proteintech@ptglab.com)  
W: [ptglab.com](http://ptglab.com)

**This product is exclusively available under Proteintech Group brand and is not available to purchase from any other manufacturer.**

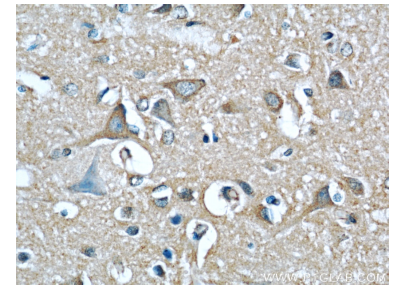
## Selected Validation Data



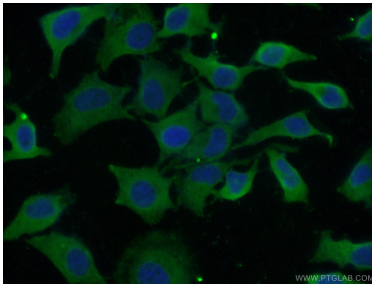
HepG2 cells were subjected to SDS PAGE followed by western blot with 66024-1-Ig (EIF3D antibody) at dilution of 1:1000 incubated at room temperature for 1.5 hours. This data was developed using the same antibody clone with 66024-1-PBS in a different storage buffer formulation.



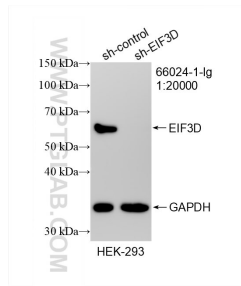
Immunohistochemical analysis of paraffin-embedded human brain using 66024-1-Ig(EIF3D antibody) at dilution of 1:50 (under 10x lens). This data was developed using the same antibody clone with 66024-1-PBS in a different storage buffer formulation.



Immunohistochemical analysis of paraffin-embedded human brain using 66024-1-Ig(EIF3D antibody) at dilution of 1:50 (under 40x lens). This data was developed using the same antibody clone with 66024-1-PBS in a different storage buffer formulation.



Immunofluorescent analysis of (10% Formaldehyde ) fixed HeLa cells using 66024-1-Ig(EIF3D antibody) at dilution of 1:50 and Alexa Fluor 488-conjugated AffiniPure Goat Anti-Mouse IgG(H+L). This data was developed using the same antibody clone with 66024-1-PBS in a different storage buffer formulation.



WB result of EIF3D antibody (66024-1-Ig; 1:20000; incubated at room temperature for 1.5 hours) with sh-Control and sh-EIF3D transfected HEK-293 cells. This data was developed using the same antibody clone with 66024-1-PBS in a different storage buffer formulation.