

For Research Use Only

Bcl-XL Monoclonal antibody, PBS Only (Detector)

Catalog Number: 66020-1-PBS



Basic Information

Catalog Number: 66020-1-PBS	GenBank Accession Number: BC019307	Purification Method: Protein A purification
Size: 100ug, Concentration: 1mg/ml by Nanodrop;	GeneID (NCBI): 598	CloneNo.: 4C12A6
Source: Mouse	UNIPROT ID: Q07817	
Isotype: IgG2b	Full Name: BCL2-like 1	
Immunogen Catalog Number: AG18037	Calculated MW: 26 kDa	
	Observed MW: 30 kDa	

Applications

Tested Applications:
WB, IHC, IF/ICC, FC (Intra), Cytometric bead array, Indirect ELISA

Species Specificity:
human, mouse, rat

Product Information

66020-1-PBS targets Bcl-XL as part of a matched antibody pair:

MP50613-1: 66020-2-PBS capture and 66020-1-PBS detection (validated in Cytometric bead array)

Unconjugated mouse monoclonal antibody pair in PBS only (BSA and azide free) storage buffer at a concentration of 1 mg/mL, ready for conjugation.

This conjugation ready format makes antibodies ideal for use in many applications including: ELISAs, multiplex assays requiring matched pairs, mass cytometry, and multiplex imaging applications. Antibody use should be optimized by the end user for each application and assay.

Background Information

BCL2L1 is a member of the BCL-2 protein family. BCL2L1 is expressed as three isoforms, Bcl-X(L), Bcl-X(s) and Bcl-X(beta), and is located at the outer mitochondrial membrane. The Bcl-XL isoform is a 233 amino acid protein, acting as an apoptotic inhibitor. Bcl-XL can form heterodimers with BAX, BAK or BCL2, and the heterodimerization with BAX does not seem to be required for anti-apoptotic activity. The Bcl-XS isoform is a shorter variant that is 178 amino acids in length and lacks a 63 amino acid region (amino acids 126-188), acting as an apoptotic activator.

Storage

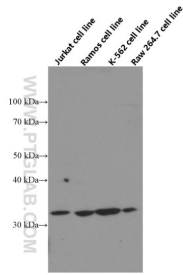
Storage:
Store at -80°C.

Storage Buffer:
PBS Only

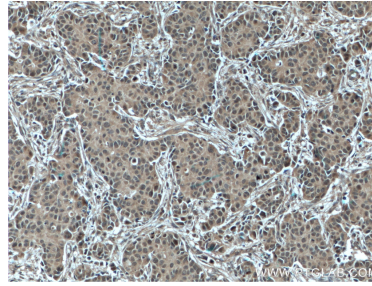
For technical support and original validation data for this product please contact:
T: 1 (888) 4PTGLAB (1-888-478-4522) (toll free in USA), or 1(312) 455-8498 (outside USA) E: proteintech@ptglab.com W: ptglab.com

This product is exclusively available under Proteintech Group brand and is not available to purchase from any other manufacturer.

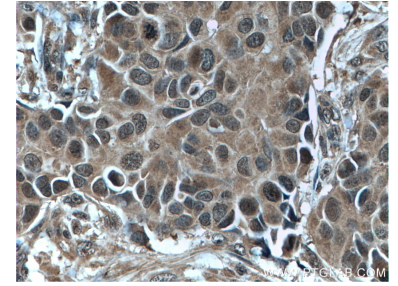
Selected Validation Data



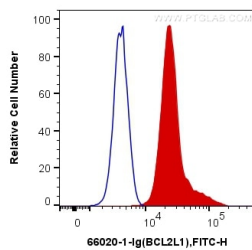
Jurkat, Ramos, K-562 and Raw 264.7 cells were subjected to SDS PAGE followed by western blot with 66020-1-Ig (Bcl-xL Antibody) at dilution of 1:20000 incubated at room temperature for 1.5 hours. This data was developed using the same antibody clone with 66020-1-PBS in a different storage buffer formulation.



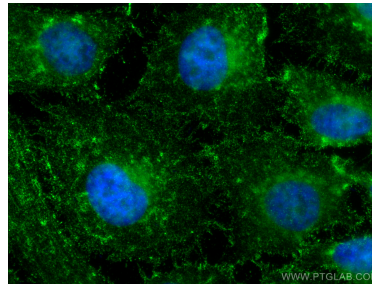
Immunohistochemical analysis of paraffin-embedded human breast cancer tissue slide using 66020-1-Ig (Bcl-XL antibody) at dilution of 1:600 (under 10x lens). Heat mediated antigen retrieval with Tris-EDTA buffer (pH 9.0). This data was developed using the same antibody clone with 66020-1-PBS in a different storage buffer formulation.



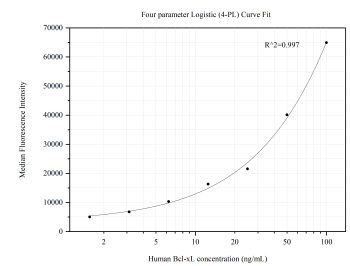
Immunohistochemical analysis of paraffin-embedded human breast cancer tissue slide using 66020-1-Ig (Bcl-XL antibody) at dilution of 1:600 (under 40x lens). Heat mediated antigen retrieval with Tris-EDTA buffer (pH 9.0). This data was developed using the same antibody clone with 66020-1-PBS in a different storage buffer formulation.



1X10⁶ HeLa cells were intracellularly stained with 0.4 ug Anti-Human Bcl-XL (66020-1-Ig; Clone:4C12A6) and CoraLite®488-Conjugated AffiniPure Goat Anti-Mouse IgG(H+L) at dilution 1:1000 (red), or 0.4 ug Control Antibody. Cells were fixed and permeabilized with Transcription Factor Staining Buffer Kit (PF00011). This data was developed using the same antibody clone with 66020-1-PBS in a different storage buffer formulation.



Immunofluorescent analysis of (4% PFA) fixed HeLa cells using Bcl-XL antibody (66020-1-Ig; Clone: 4C12A6) at dilution of 1:400 and CoraLite®488-Conjugated AffiniPure Goat Anti-Mouse IgG(H+L). This data was developed using the same antibody clone with 66020-1-PBS in a different storage buffer formulation.



Cytometric bead array standard curve of MP50613-1, Bcl-xL Monoclonal Matched Antibody Pair, PBS Only. Capture antibody: 66020-2-PBS. Detection antibody: 66020-1-PBS. Standard:Ag18037. Range: 1.563-100 ng/mL