

For Research Use Only

Bcl-XL Monoclonal antibody

Catalog Number: 66020-1-Ig **23 Publications**



Basic Information

Catalog Number: 66020-1-Ig	GenBank Accession Number: BC019307	Purification Method: Protein A purification
Size: 150ul , Concentration: 1000 ug/ml by Nanodrop;	GeneID (NCBI): 598	CloneNo.: 4C12A6
Source: Mouse	UNIPROT ID: Q07817	Recommended Dilutions: WB 1:2000-1:20000 IHC 1:200-1:600 IF/ICC 1:200-1:800
Isotype: IgG2b	Full Name: BCL2-like 1	
Immunogen Catalog Number: AG18037	Calculated MW: 26 kDa	
	Observed MW: 30 kDa	

Applications

Tested Applications: WB, IHC, IF/ICC, FC (Intra), ELISA	Positive Controls: WB : Jurkat cells, A431 cells, HeLa cells, Ramos cells, K-562 cells, Raw 264.7 cells IHC : human breast cancer tissue, human lymphoma tissue, human testis tissue, human colon tissue IF/ICC : HeLa cells,
Cited Applications: WB, IHC, IF, IP, CoIP	
Species Specificity: human, mouse, rat	
Cited Species: human, mouse	

Note-IHC: suggested antigen retrieval with TE buffer pH 9.0; (*) Alternatively, antigen retrieval may be performed with citrate buffer pH 6.0

Background Information

BCL2L1 is a member of the BCL-2 protein family. BCL2L1 is expressed as three isoforms, Bcl-X(L), Bcl-X(s) and Bcl-X(beta), and is located at the outer mitochondrial membrane. The Bcl-XL isoform is a 233 amino acid protein, acting as an apoptotic inhibitor. Bcl-XL can form heterodimers with BAX, BAK or BCL2, and the heterodimerization with BAX does not seem to be required for anti-apoptotic activity. The Bcl-XS isoform is a shorter variant that is 178 amino acids in length and lacks a 63 amino acid region (amino acids 126-188), acting as an apoptotic activator.

Notable Publications

Author	Pubmed ID	Journal	Application
Yingjie Qing	34603598	Oxid Med Cell Longev	WB
Liling Jiang	36082692	Clin Transl Med	WB
Xi Chen	33174023	Mol Med Rep	WB

Storage

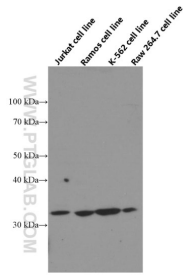
Storage:
Store at -20°C. Stable for one year after shipment.
Storage Buffer:
PBS with 0.02% sodium azide and 50% glycerol, pH7.3
Aliquoting is unnecessary for -20°C storage

*** 20ul sizes contain 0.1% BSA

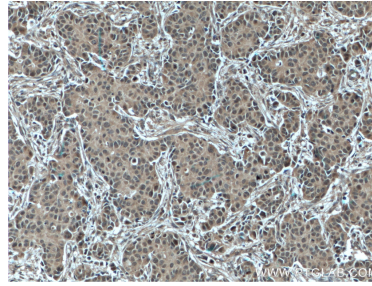
For technical support and original validation data for this product please contact:
T: 1 (888) 4PTGLAB (1-888-478-4522) (toll free in USA), or 1(312) 455-8498 (outside USA)
E: proteintech@ptglab.com
W: ptglab.com

This product is exclusively available under Proteintech Group brand and is not available to purchase from any other manufacturer.

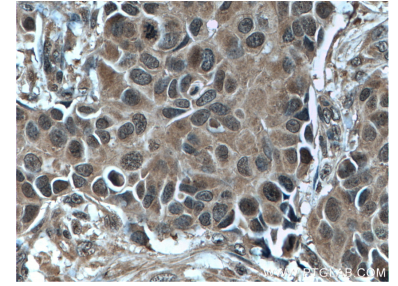
Selected Validation Data



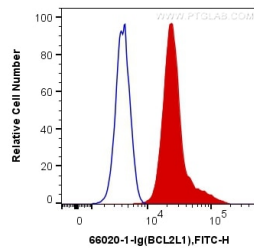
Jurkat, Ramos, K-562 and Raw 264.7 cells were subjected to SDS PAGE followed by western blot with 66020-1-Ig (Bcl-xL Antibody) at dilution of 1:20000 incubated at room temperature for 1.5 hours.



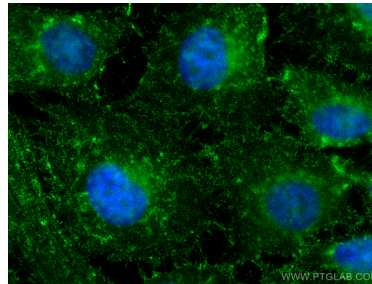
Immunohistochemical analysis of paraffin-embedded human breast cancer tissue slide using 66020-1-Ig (Bcl-XL antibody) at dilution of 1:600 (under 10x lens. Heat mediated antigen retrieval with Tris-EDTA buffer (pH 9.0).



Immunohistochemical analysis of paraffin-embedded human breast cancer tissue slide using 66020-1-Ig (Bcl-XL antibody) at dilution of 1:600 (under 40x lens. Heat mediated antigen retrieval with Tris-EDTA buffer (pH 9.0).



1X10⁶ HeLa cells were intracellularly stained with 0.4 ug Anti-Human Bcl-XL (66020-1-Ig, Clone:4C 12A6) and CoraLite®488-Conjugated Goat Anti-Mouse IgG(H+L) at dilution 1:1000 (red), or 0.4 ug Control Antibody. Cells were fixed and permeabilized with Transcription Factor Staining Buffer Kit (PF00011).



Immunofluorescent analysis of (4% PFA) fixed HeLa cells using Bcl-XL antibody (66020-1-Ig, Clone: 4C 12A6) at dilution of 1:400 and CoraLite®488-Conjugated Goat Anti-Mouse IgG(H+L).