

For Research Use Only

HLA class I ABC Monoclonal antibody, PBS Only

Catalog Number: 66013-1-PBS

Featured Product



Basic Information

Catalog Number:

66013-1-PBS

Size:

100ug, Concentration: 1mg/ml by
Nanodrop;

Source:

Mouse

Isotype:

IgG2b

Immunogen Catalog Number:

AG7488

GenBank Accession Number:

BC003069

GeneID (NCBI):

3105

UNIPROT ID:

P04439

Full Name:

major histocompatibility complex,
class I, A

Calculated MW:

41 kDa

Observed MW:

40-44 kDa

Purification Method:

Protein A purification

CloneNo.:

5C5B7

Applications

Tested Applications:

WB, IHC, IF/ICC, FC, Indirect ELISA

Species Specificity:

human, pig

Background Information

Human major histocompatibility complex (MHC) antigens, also referred to as human leukocyte antigens (HLA), are encoded by genes located on the short arm of chromosome 6 (6p21.3). There are two classes of HLA antigens: class I (HLA-A, B and C) and class II (HLA-D). This class I molecules are polymorphic membrane glycoproteins composed of a heavy (alpha) chain (44 kDa) which is encoded by a HLA class I gene (HLA-A, B or C), and β 2-microglobulin light (beta) chain (12 kDa). They are involved in the presentation of foreign antigens to the immune system. (PMID: 667938; 3375250)

Storage

Storage:

Store at -80°C.

Storage Buffer:

PBS Only

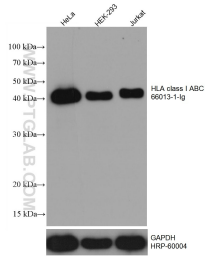
For technical support and original validation data for this product please contact:

T: 1 (888) 4PTGLAB (1-888-478-4522) (toll free
in USA), or 1(312) 455-8498 (outside USA)

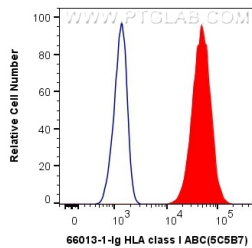
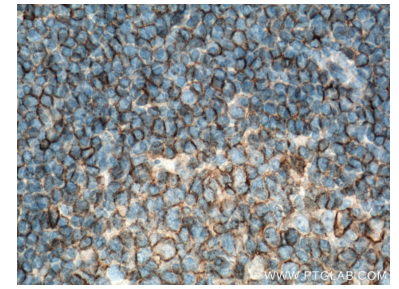
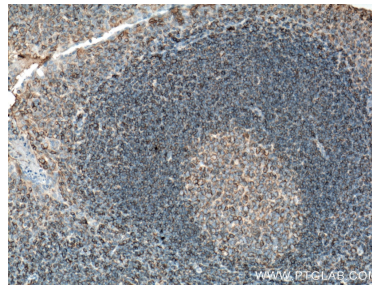
E: proteintech@ptglab.com
W: ptglab.com

This product is exclusively available under Proteintech Group brand and is not available to purchase from any other manufacturer.

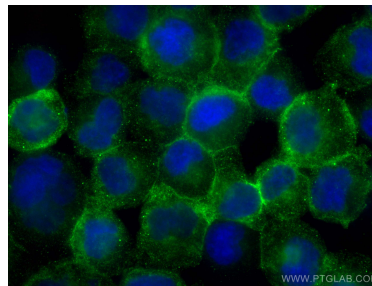
Selected Validation Data



Various lysates were subjected to SDS PAGE followed by western blot with 66013-1-Ig (HLA class I ABC antibody) at dilution of 1:10000 incubated at room temperature for 1.5 hours. The membrane was stripped and reblotted with HRP-conjugated GAPDH Monoclonal antibody (HRP-60004) as loading control. This data was developed using the same antibody clone with 66013-1-PBS in a different storage buffer formulation.



1×10^6 Raji cells were surface stained with 0.4 ug Anti-Human HLA class I ABC (66013-1-Ig, Clone: 5C5B7) and Coralite@488-Conjugated AffiniPure Goat Anti-Mouse IgG(H+L) at dilution 1:1000 (red), or 0.4 ug Mouse IgG2b Isotype Control (MPC-11) (65128-1-Ig, Clone: MPC-11) (blue). Cells were not fixed. This data was developed using the same antibody clone with 66013-1-PBS in a different storage buffer formulation.



Immunofluorescent analysis of (4% PFA) fixed Raji cells using HLA class I ABC antibody (66013-1-Ig, Clone: 5C5B7) at dilution of 1:800 and Coralite@488-Conjugated AffiniPure Goat Anti-Mouse IgG(H+L). This data was developed using the same antibody clone with 66013-1-PBS in a different storage buffer formulation.