

For Research Use Only

SEC5/EXOC2 Monoclonal antibody, PBS Only



Catalog Number: 66011-1-PBS

Featured Product

Basic Information

Catalog Number:

66011-1-PBS

GenBank Accession Number:

BC016918

Purification Method:

Protein A purification

Size:

100ug, Concentration: 1 mg/ml by
Nanodrop;

GeneID (NCBI):

55770

CloneNo.:

1C11G2

Source:

Mouse

UNIPROT ID:

Q96KP1

Isotype:

IgG2b

Full Name:

exocyst complex component 2

Immunogen Catalog Number:

AG17866

Calculated MW:

924 aa, 104 kDa

Observed MW:

100 kDa

Applications

Tested Applications:

WB, IP, IF, IHC, Indirect ELISA

Species Specificity:

human, mouse, pig, rat

Background Information

EXOC2 (exocyst complex component 2), also known as SEC5 and SEC5L1, is a component of the exocyst complex, and is required to mediate RasB-dependent survival signals in transformed cells. The exocyst complex, composed of eight evolutionarily conserved subunits (SEC3, SEC5, SEC6, SEC8, SEC10, SEC15, EXO70, and EXO84), is involved in tethering post-Golgi secretory vesicles to specific plasma membrane domains. The gene of EXOC2 maps to chromosome 6p25.3, and encodes a 924-amino acid protein with an experimentally determined molecular mass of 95-100 kDa. EXOC2 mRNA is widely expressed with highest levels in brain and placenta.

Storage

Storage:

Store at -80°C.

Storage Buffer:

PBS Only

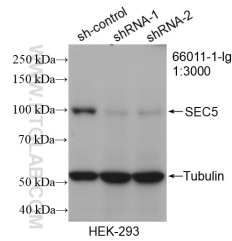
For technical support and original validation data for this product please contact:

T: 1 (888) 4PTGLAB (1-888-478-4522) (toll free
in USA), or 1(312) 455-8498 (outside USA)

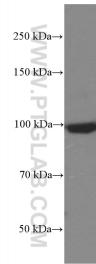
E: proteintech@ptglab.com
W: ptglab.com

This product is exclusively available under Proteintech Group brand and is not available to purchase from any other manufacturer.

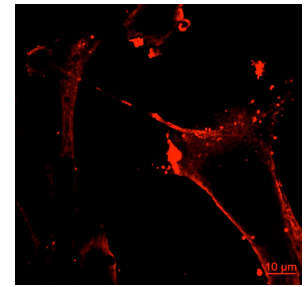
Selected Validation Data



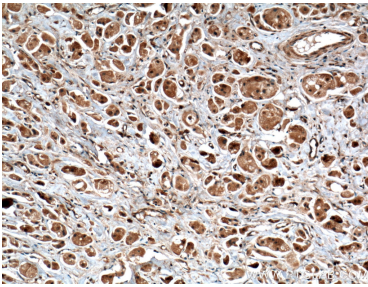
WB result of SEC5/EXOC2 antibody (66011-1-Ig; 1:3000; incubated at room temperature for 1.5 hours) with sh-Control and sh-SEC5/EXOC2 transfected HEK-293 cells. This data was developed using the same antibody clone with 66011-1-PBS in a different storage buffer formulation.



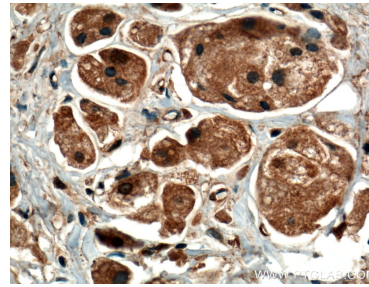
mouse brain tissue were subjected to SDS PAGE followed by western blot with 66011-1-Ig (SEC5/EXOC2 antibody) at dilution of 1:5000 incubated at room temperature for 1.5 hours. This data was developed using the same antibody clone with 66011-1-PBS in a different storage buffer formulation.



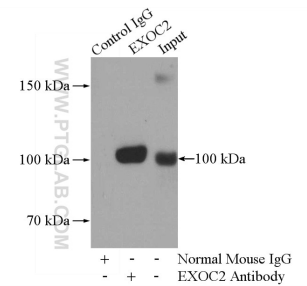
Immunostaining of exocyst protein Sec5 (66011-1-Ig, red) in MDA-MB-231 cells. The image was credited by Dr. Hae Lin Jang from Harvard Medical School. This data was developed using the same antibody clone with 66011-1-PBS in a different storage buffer formulation.



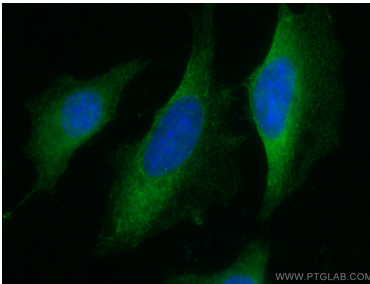
Immunohistochemical analysis of paraffin-embedded human breast cancer tissue slide using 66011-1-Ig (SEC5/EXOC2 antibody) at dilution of 1:400 (under 10x lens. Heat mediated antigen retrieval with Tris-EDTA buffer (pH 9.0). This data was developed using the same antibody clone with 66011-1-PBS in a different storage buffer formulation.



Immunohistochemical analysis of paraffin-embedded human breast cancer tissue slide using 66011-1-Ig (SEC5/EXOC2 antibody) at dilution of 1:400 (under 40x lens. Heat mediated antigen retrieval with Tris-EDTA buffer (pH 9.0). This data was developed using the same antibody clone with 66011-1-PBS in a different storage buffer formulation.



IP result of anti-SEC5/EXOC2 (IP:66011-1-Ig, 5 μ g; Detection:66011-1-Ig 1:500) with mouse brain tissue lysate 3440 μ g. This data was developed using the same antibody clone with 66011-1-PBS in a different storage buffer formulation.



Immunofluorescent analysis of (-20°C Ethanol) fixed HeLa cells using SEC5/EXOC2 antibody (66011-1-Ig, Clone: 1C11G2) at dilution of 1:400 and CoraLite®488-Conjugated AffiniPure Goat Anti-Mouse IgG(H+L). This data was developed using the same antibody clone with 66011-1-PBS in a different storage buffer formulation.