

For Research Use Only

Anti-Human CD14 (26IC) Mouse IgG2a Recombinant Antibody

Catalog Number: 65616-1-MR



Basic Information

Catalog Number: 65616-1-MR	GenBank Accession Number: BC010507	Purification Method: Protein A purification
Size: 100ug, 1 mg/ml	GeneID (NCBI): 929	CloneNo.: 26IC
Source: Mouse	ENSEMBL Gene ID: ENSG00000170458	
Isotype: IgG2a	Full Name: CD14 molecule	
	Calculated MW: 375 aa, 40 kDa	

Applications

Tested Applications:
FC

Species Specificity:
human

Background Information

CD14 is a 50-55 kDa glycosylphosphatidylinositol-anchored glycoprotein preferentially expressed on monocytes and macrophages, and at lower levels on granulocytes (PMID: 3385210; 2462937; 7685797). CD14 can also exist as a soluble protein. CD14 acts as a co-receptor for bacterial liposaccharides (LPS) (PMID: 1698311). It plays a major role in the inflammatory response of monocytes to LPS.

Storage

Storage:
Store at 2-8°C. Stable for one year after shipment.

Storage Buffer:
PBS with 0.09% sodium azide.

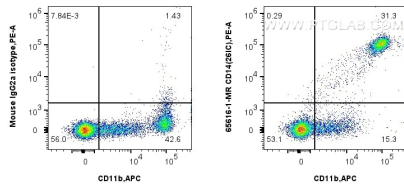
For technical support and original validation data for this product please contact:

T: 1 (888) 4PTGLAB (1-888-478-4522) (toll free in USA), or 1(312) 455-8498 (outside USA)

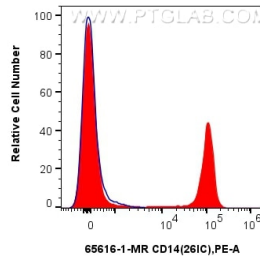
E: proteintech@ptglab.com
W: ptglab.com

This product is exclusively available under Proteintech Group brand and is not available to purchase from any other manufacturer.

Selected Validation Data



1x10⁶ human PBMCs were surface stained with 0.25 ug Anti-Human CD14 (261C) Mouse IgG2a Recombinant Antibody (65616-1-MR, Clone: 261C) or Mouse IgG2a Isotype Control, and PE-conjugated Goat Anti-Mouse IgG. Cells were then stained with APC Anti-Human CD11b (ICRF44) (APC-65116, Clone: ICRF44). Cells were incubated with FC Receptor Block prior to fixing and staining. Cells were not fixed.



1x10⁶ human PBMCs were surface stained with 0.25 ug Anti-Human CD14 (261C) Mouse IgG2a Recombinant Antibody (65616-1-MR, Clone:261C) (red) or Mouse IgG2a Isotype Control (blue), and PE-conjugated Goat Anti-Mouse IgG. Cells were incubated with FC Receptor Block prior to fixing and staining. Cells were not fixed.