

For Research Use Only

# Anti-Human ALCAM (3A6) Mouse IgG2a Recombinant Antibody

Catalog Number: 65611-1-MR



## Basic Information

Catalog Number:

65611-1-MR

Size:

100ug, 1 mg/ml

Source:

Mouse

Isotype:

IgG2a

GenBank Accession Number:

BC057809

GeneID (NCBI):

214

Full Name:

activated leukocyte cell adhesion molecule

Calculated MW:

105 kDa

Purification Method:

Protein A purification

CloneNo.:

3A6

Recommended Dilutions:

IF/ICC 1:500-1:2000

## Applications

Tested Applications:

IF/ICC, FC

Species Specificity:

human

Positive Controls:

IF/ICC : hTERT-RPE1 cells,

## Background Information

Activated leukocyte cell adhesion molecule (ALCAM, also known as CD166) is a cell adhesion molecule that belongs to the immunoglobulin superfamily. It is involved in cell-cell adhesion through homophilic and heterophilic (to CD6) interactions. ALCAM is widely expressed in a variety of normal tissues and cell types, including activated T cells and monocytes, epithelial cells, fibroblasts, neuronal cells, hepatocytes, and bone marrow mesenchymal stem cells (PMID: 7760007; 25221999). Altered ALCAM expression has been associated with the differentiation state and progression in some neoplasms including melanoma, prostate, colorectal, and breast cancers (PMID: 20461761; 18172759).

## Storage

Storage:

Store at 2-8°C. Stable for one year after shipment.

Storage Buffer:

PBS with 0.09% sodium azide.

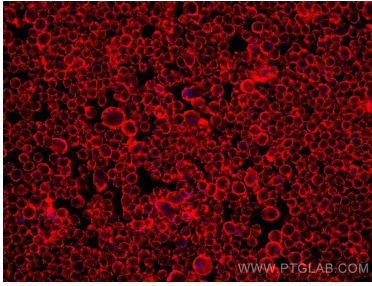
For technical support and original validation data for this product please contact:

T: 1 (888) 4PTGLAB (1-888-478-4522) (toll free in USA), or 1(312) 455-8498 (outside USA)

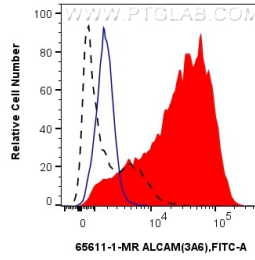
E: [proteintech@ptglab.com](mailto:proteintech@ptglab.com)  
W: [ptglab.com](http://ptglab.com)

This product is exclusively available under Proteintech Group brand and is not available to purchase from any other manufacturer.

## Selected Validation Data



Immunofluorescent analysis of un-fixed hTERT-RPE1 cells using ALCAM antibody (65611-1-MR, Clone: 3A6 ) at dilution of 1:1000 and Multi-rAb CoraLite® Plus 594-Goat Anti-Mouse Recombinant Secondary Antibody (H+L) (RGAM004).



1x10<sup>6</sup> PHA treated human PBMCs were surface stained with 0.25 ug Anti-Human ALCAM Mouse IgG2a Recombinant Antibody (65611-1-MR, Clone: 3A6) (red) or Mouse IgG2a Isotype Control (65208-1-Ig, Clone: C1.18.4) (blue), and CoraLite®488-Conjugated AffiniPure Donkey Anti-Mouse IgG(H+L). Untreated human PBMCs were surface stained with 0.25 ug Anti-Human ALCAM Mouse IgG2a Recombinant Antibody (65611-1-MR, Clone: 3A6) and CoraLite®488-

