

For Research Use Only

Anti-Human CD11c (BU15) Mouse IgG2a Recombinant Antibody



Catalog Number: 65600-1-MR

Basic Information

| | | |
|--------------------------------------|--|---|
| Catalog Number: 65600-1-MR | GenBank Accession Number: BC038237 | Purification Method: Protein A purification |
| Size: 100ug, 1 mg/ml | GeneID (NCBI): 3687 | CloneNo.: BU15 |
| Source: Mouse | ENSEMBL Gene ID: ENSG00000140678 | |
| Isotype: IgG2a | Full Name: integrin, alpha X (complement component 3 receptor 4 subunit) | |
| | Calculated MW: 1169 aa, 129 kDa | |

Applications

Tested Applications:
FC

Species Specificity:
Human

Background Information

Integrins are cell adhesion receptors that are heterodimers composed of non-covalently associated α and β subunits (PMID: 9779984). CD11c, also known as integrin αX , is a type I transmembrane glycoprotein present on a variety of cells, including monocytes/macrophages, granulocytes, a subset of B cells, NK cells and dendritic cells (PMID: 2897326; 1680915; 1694698; 17389580). As a result of its high level of expression on most dendritic cells, CD11c is typically considered to be a marker of conventional dendritic cells (PMID: 27119555). CD11c forms an α/β heterodimer with CD18 (integrin $\beta 2$). CD11c/CD18 acts as a receptor for fibrinogen and is important in monocyte adhesion and chemotaxis (PMID: 1671533).

Storage

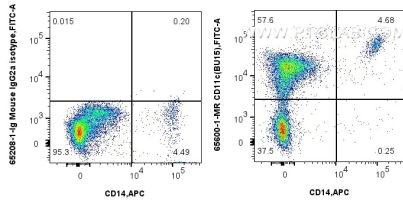
Storage:
Store at 2-8°C. Stable for one year after shipment.

Storage Buffer:
PBS with 0.09% sodium azide.

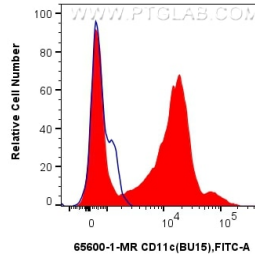
For technical support and original validation data for this product please contact:
T: 1 (888) 4PTGLAB (1-888-478-4522) (toll free in USA), or 1(312) 455-8498 (outside USA)
E: proteintech@ptglab.com
W: ptglab.com

This product is exclusively available under Proteintech Group brand and is not available to purchase from any other manufacturer.

Selected Validation Data



1x10⁶ human peripheral blood leukocyte were surface stained with 0.25 ug Anti-Human CD11c Mouse IgG2a Recombinant Antibody (65600-1-MR, Clone: BU15) or Mouse IgG2a Isotype Control (65208-1-Ig, Clone: C1.18.4) and CoraLite®488-Conjugated AffiniPure Donkey Anti-Mouse IgG(H+L). Cells were then stained with APC Anti-Human CD14. Cells were incubated with FC Receptor Block prior to staining. Cells were not fixed.



1x10⁶ human peripheral blood leukocyte were surface stained with 0.25 ug Anti-Human CD11c Mouse IgG2a Recombinant Antibody (65600-1-MR, Clone: BU15) (red) or Mouse IgG2a Isotype Control (65208-1-Ig, Clone: C1.18.4) (blue) and CoraLite®488-Conjugated AffiniPure Donkey Anti-Mouse IgG(H+L). Cells were incubated with FC Receptor Block prior to staining. Cells were not fixed.