

For Research Use Only

# Anti-Human CD58 (TS2/9) Mouse IgG2a Recombinant Antibody, PBS Only

Catalog Number: 65597-1-PBS



## Basic Information

Catalog Number:

65597-1-PBS

Size:

1mg, 2mg/ml

Source:

Mouse

Isotype:

IgG2a

GenBank Accession Number:

BC005930

GeneID (NCBI):

965

Full Name:

CD58 molecule

Calculated MW:

28 kDa

Purification Method:

Protein A purification

CloneNo.:

TS2/9

## Applications

Tested Applications:

FC

Species Specificity:

human

## Background Information

CD58, also known as lymphocyte function-associated antigen 3 (LFA-3), is a heavily glycosylated protein of 55-70 kDa that is expressed on a broad range of hematopoietic and non-hematopoietic cells. CD58 is involved in immune recognition of tumor cells via binding of the CD2 receptor expressed on cytotoxic T cells.

## Storage

Storage:

Store at -80°C.

Storage Buffer:

PBS Only

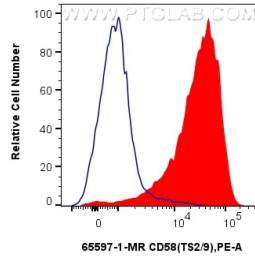
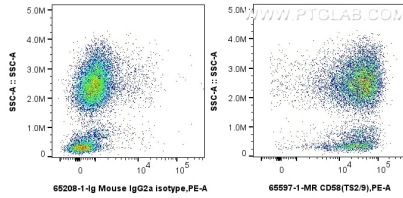
For technical support and original validation data for this product please contact:

T: 1 (888) 4PTGLAB (1-888-478-4522) (toll free in USA), or 1(312) 455-8498 (outside USA)

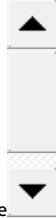
E: [proteintech@ptglab.com](mailto:proteintech@ptglab.com)  
W: [ptglab.com](http://ptglab.com)

This product is exclusively available under Proteintech Group brand and is not available to purchase from any other manufacturer.

## Selected Validation Data



1x10<sup>6</sup> human peripheral blood leukocytes were surface stained with 0.25 ug Anti-Human CD58 (TS2/9) Mouse IgG2a Recombinant Antibody (65597-1-MR, Clone: TS2/9) or Mouse IgG2a Isotype Control (C1.18.4) (65208-1-Ig, Clone: C1.18.4) and PE-conjugated Goat Anti-Mouse IgG. Cells were incubated with FC Receptor Block prior to staining. Cells were not fixed. This data was developed using the same antibody clone with 65597-1-PBS in a different storage



1x10<sup>6</sup> human peripheral blood leukocytes were surface stained with 0.25 ug Anti-Human CD58 (TS2/9) Mouse IgG2a Recombinant Antibody (65597-1-MR, Clone: TS2/9) (red) or Mouse IgG2a Isotype Control (C1.18.4) (65208-1-Ig, Clone: C1.18.4) (blue) and PE-conjugated Goat Anti-Mouse IgG. Cells were incubated with FC Receptor Block prior to staining. Cells were not fixed. This data was developed using the same antibody clone with 65597-1-PBS in a

