

For Research Use Only

CD11b Recombinant antibody, PBS Only

Catalog Number: 65582-1-PBS



Basic Information

Catalog Number:

65582-1-PBS

Size:

1mg, 2 mg/ml

Source:

Mouse

Isotype:

IgG2a

GenBank Accession Number:

BC096346

GeneID (NCBI):

3684

ENSEMBL Gene ID:

ENSG00000169896

Full Name:

integrin, alpha M (complement component 3 receptor 3 subunit)

Calculated MW:

1152 aa, 127 kDa

Purification Method:

Protein A purification

CloneNo.:

ICRF44

Applications

Tested Applications:

FC

Species Specificity:

human

Background Information

Integrins are cell adhesion receptors that are heterodimers composed of non-covalently associated α and β subunits (PMID: 9779984). CD11b, also known as Integrin alpha M or CR3A, belongs to the integrin alpha chain family. CD11b forms an α/β heterodimer with CD18 (integrin β 2). CD11b/CD18 is implicated in various adhesive interactions of monocytes, macrophages and granulocytes as well as in mediating the uptake of complement-coated particles and pathogens (PMID: 9558116; 20008295). CD11b/CD18 is a receptor for the complement protein fragment iC3b, and is also a receptor for fibrinogen, factor X and ICAM1 (PMID: 2971974; 15485828).

Storage

Storage:

Store at -80°C .

Storage Buffer:

PBS Only

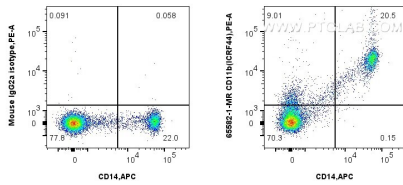
For technical support and original validation data for this product please contact:

T: 1 (888) 4PTGLAB (1-888-478-4522) (toll free in USA), or 1(312) 455-8498 (outside USA)

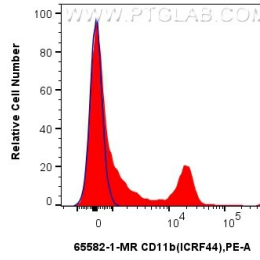
E: proteintech@ptglab.com
W: ptglab.com

This product is exclusively available under Proteintech Group brand and is not available to purchase from any other manufacturer.

Selected Validation Data



1x10⁶ human PBMCs were surface stained with 0.25 ug Anti-Human CD11b (ICRF44) Mouse IgG2a Recombinant Antibody (65582-1-MR, Clone:ICRF44) or Mouse IgG2a Isotype Control (C1.18.4) (65208-1-Ig, Clone: C1.18.4) and PE-conjugated Goat Anti-Mouse IgG. Cells were then stained with APC Anti-Human CD14. Cells were incubated with FC Receptor Block prior to staining. Cells were not fixed. This data was developed using the same antibody clone with 65582-1-PBS in a



1x10⁶ human PBMCs were surface stained with 0.25 ug Anti-Human CD11b (ICRF44) Mouse IgG2a Recombinant Antibody (65582-1-MR, Clone:ICRF44) (red) or Mouse IgG2a Isotype Control (C1.18.4) (65208-1-Ig, Clone: C1.18.4) (blue) and PE-conjugated Goat Anti-Mouse IgG. Cells were incubated with FC Receptor Block prior to staining. Cells were not fixed. This data was developed using the same antibody clone with 65582-1-PBS in a

