

For Research Use Only

# Anti-Human CD11b (ICRF44) Mouse IgG2a Recombinant Antibody

Catalog Number: 65582-1-MR



## Basic Information

<b>Catalog Number:</b> 65582-1-MR	<b>GenBank Accession Number:</b> BC096346	<b>Purification Method:</b> Protein A purification
<b>Size:</b> 100ug, 1 mg/ml	<b>GeneID (NCBI):</b> 3684	<b>CloneNo.:</b> ICRF44
<b>Source:</b> Mouse	<b>ENSEMBL Gene ID:</b> ENSG00000169896	
<b>Isotype:</b> IgG2a	<b>Full Name:</b> integrin, alpha M (complement component 3 receptor 3 subunit)	
	<b>Calculated MW:</b> 1152 aa, 127 kDa	

## Applications

**Tested Applications:**  
FC

**Species Specificity:**  
human

## Background Information

Integrins are cell adhesion receptors that are heterodimers composed of non-covalently associated  $\alpha$  and  $\beta$  subunits (PMID: 9779984). CD11b, also known as Integrin alpha M or CR3A, belongs to the integrin alpha chain family. CD11b forms an  $\alpha/\beta$  heterodimer with CD18 (integrin  $\beta$ 2). CD11b/CD18 is implicated in various adhesive interactions of monocytes, macrophages and granulocytes as well as in mediating the uptake of complement-coated particles and pathogens (PMID: 9558116; 20008295). CD11b/CD18 is a receptor for the complement protein fragment iC3b, and is also a receptor for fibrinogen, factor X and ICAM1 (PMID: 2971974; 15485828).

## Storage

**Storage:**  
Store at 2-8°C. Stable for one year after shipment.

**Storage Buffer:**  
PBS with 0.09% sodium azide.

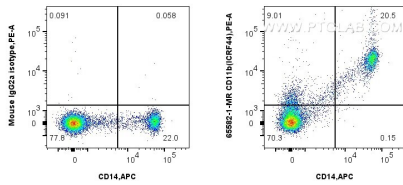
For technical support and original validation data for this product please contact:

T: 1 (888) 4PTGLAB (1-888-478-4522) (toll free in USA), or 1(312) 455-8498 (outside USA)

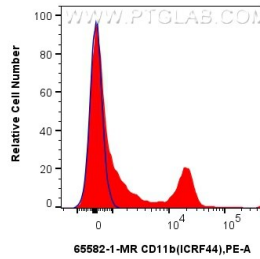
E: [proteintech@ptglab.com](mailto:proteintech@ptglab.com)  
W: [ptglab.com](http://ptglab.com)

**This product is exclusively available under Proteintech Group brand and is not available to purchase from any other manufacturer.**

## Selected Validation Data



1x10<sup>6</sup> human PBMCs were surface stained with 0.25 ug Anti-Human CD11b (ICRF44) Mouse IgG2a Recombinant Antibody (65582-1-MR, Clone:ICRF44) or Mouse IgG2a Isotype Control (C1.18.4) (65208-1-Ig, Clone: C1.18.4) and PE-conjugated Goat Anti-Mouse IgG. Cells were then stained with APC Anti-Human CD14. Cells were incubated with FC Receptor Block prior to staining. Cells were not fixed.



1x10<sup>6</sup> human PBMCs were surface stained with 0.25 ug Anti-Human CD11b (ICRF44) Mouse IgG2a Recombinant Antibody (65582-1-MR, Clone:ICRF44) (red) or Mouse IgG2a Isotype Control (C1.18.4) (65208-1-Ig, Clone: C1.18.4) (blue) and PE-conjugated Goat Anti-Mouse IgG. Cells were incubated with FC Receptor Block prior to staining. Cells were not fixed.